

Aldi Square Derby, Connecticut	1 Mile Radius	3 Mile Radius	5 Mile Radius	10 Minute Drive
-----------------------------------	---------------	---------------	---------------	-----------------

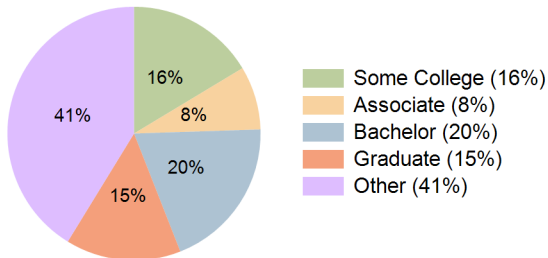
### Current Year Demographics

Current Population	12,443	53,980	98,139	56,986
Total Daytime Pop	14,721	44,635	89,579	56,674
Daytime Workers	8,210	18,463	43,195	28,517
Average Household Income	\$89,015	\$114,322	\$139,786	\$113,382
Median Household Income	\$63,246	\$86,431	\$102,887	\$85,057
Total Households	5,701	22,733	40,066	24,144
Median Home Value	\$275,227	\$346,930	\$404,048	\$351,177
Bachelors Degree	13.5%	18.5%	21.1%	19.6%
Graduate Degree	12.2%	14.4%	20.1%	14.7%
Consumer Spending Index	80	101	122	100

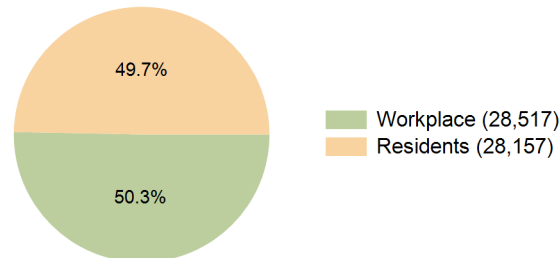
### 2029 Demographic Projections

Projected Population	12,764	53,939	97,514	57,106
Projected 5 Year Annual Growth Rate (Pop)	0.5%	0.0%	-0.1%	0.0%
Projected Households	5,998	23,250	40,700	24,749
Projected 5 Year Annual Growth Rate (HH)	1.0%	0.5%	0.3%	0.5%

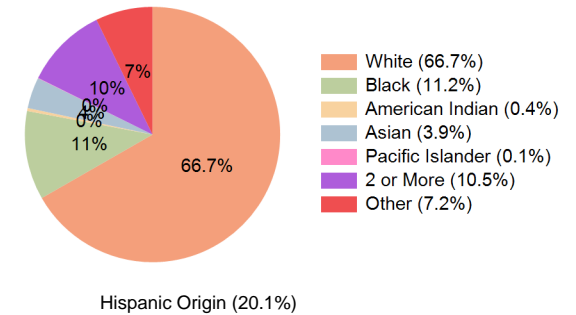
Education (10 Minute Drive)



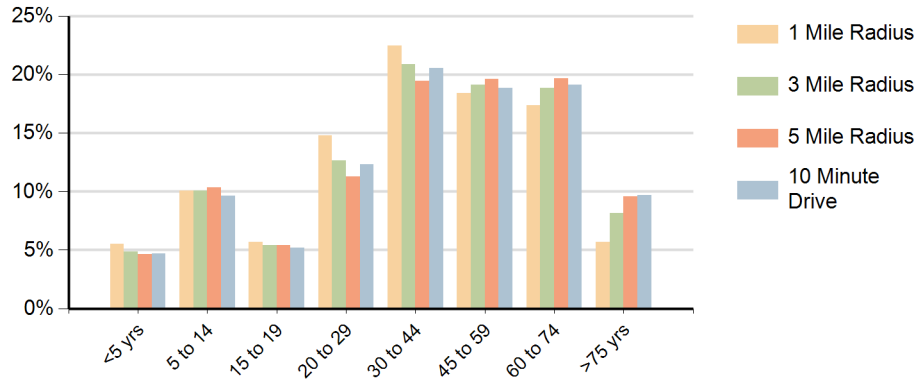
Daytime Population (10 Minute Drive)



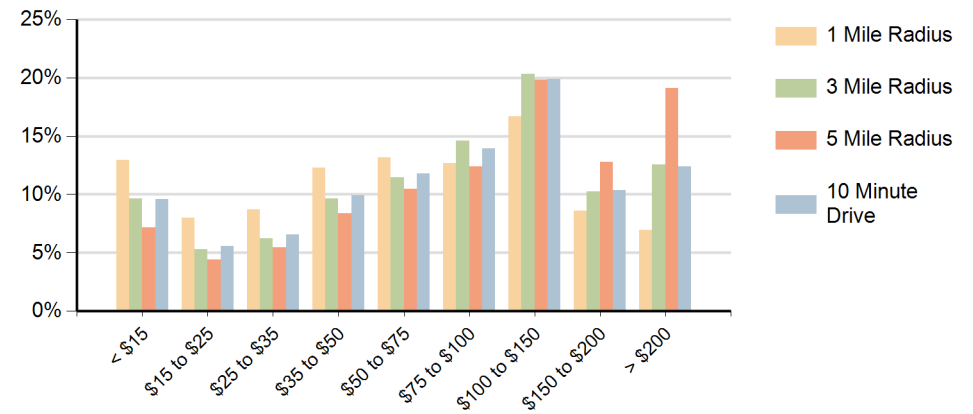
Race (10 Minute Drive)



## Population by Age Range



## Households by Income Range (\$000)



Aldi Square Derby, Connecticut		1 Mile Radius	3 Mile Radius	5 Mile Radius	10 Minute Drive
Population	Current Estimated Population	12,443	53,980	98,139	56,986
	2020 Census Population	12,413	54,040	98,359	56,814
	2010 Census Population	12,432	54,493	97,761	56,433
	Historical Annual Growth 2010 to 2020	0.0%	-0.1%	0.1%	0.1%
	Estimated Annual Growth 2020 to 2024	0.1%	0.0%	-0.1%	0.1%
	Projected Annual Growth 2024 to 2029	0.5%	0.0%	-0.1%	0.0%
Households	Current Estimated Households	5,701	22,733	40,066	24,144
	2020 Census Households	5,589	22,415	39,609	23,725
	2010 Census Households	5,317	21,806	38,374	22,793
	Historical Annual Growth 2010 to 2020	0.5%	0.3%	0.3%	0.4%
	Estimated Annual Growth 2020 to 2024	0.5%	0.3%	0.3%	0.4%
	Projected Annual Growth 2024 to 2029	1.0%	0.5%	0.3%	0.5%
	Population per Household	2.2	2.4	2.4	2.3
Race	White	57.0%	65.9%	72.3%	66.7%
	Black or African American	16.7%	11.6%	8.0%	11.2%
	American Indian	0.6%	0.4%	0.3%	0.4%
	Asian	2.6%	3.9%	4.8%	3.9%
	Pacific Islander	0.1%	0.1%	0.0%	0.1%
	2 or More Races	11.5%	10.8%	9.3%	10.5%
	Other Races	11.5%	7.4%	5.2%	7.2%
	Hispanic Origin	29.0%	20.9%	15.5%	20.1%