

Greenwich Commons  
Greenwich, Connecticut

1 Mile Radius

3 Mile Radius

5 Mile Radius

10 Minute Drive

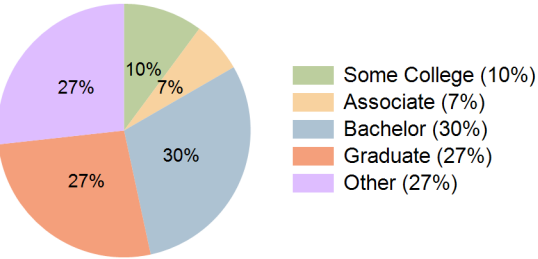
Current Year Demographics

Current Population	11,148	73,787	158,215	55,011
Total Daytime Pop	23,692	76,694	189,486	64,830
Daytime Workers	18,046	39,743	109,959	37,692
Average Household Income	\$185,791	\$195,408	\$192,598	\$188,378
Median Household Income	\$121,691	\$129,973	\$126,648	\$125,853
Total Households	5,071	27,012	56,815	20,939
Median Home Value	\$1,251,190	\$932,119	\$1,014,664	\$877,979
Bachelors Degree	30.0%	29.7%	30.4%	29.9%
Graduate Degree	33.4%	27.7%	27.1%	26.6%
Consumer Spending Index	160	168	167	163

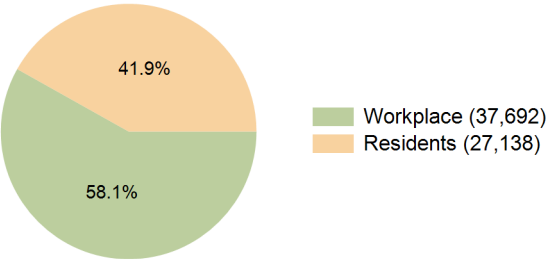
2029 Demographic Projections

Projected Population	11,005	74,474	161,049	55,267
Projected 5 Year Annual Growth Rate (Pop)	-0.3%	0.2%	0.4%	0.1%
Projected Households	5,072	27,316	58,390	21,136
Projected 5 Year Annual Growth Rate (HH)	0.0%	0.2%	0.6%	0.2%

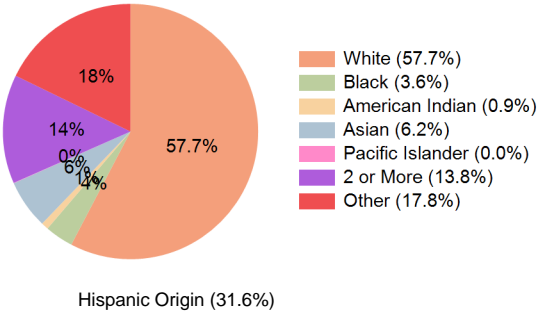
Education (10 Minute Drive)



Daytime Population (10 Minute Drive)

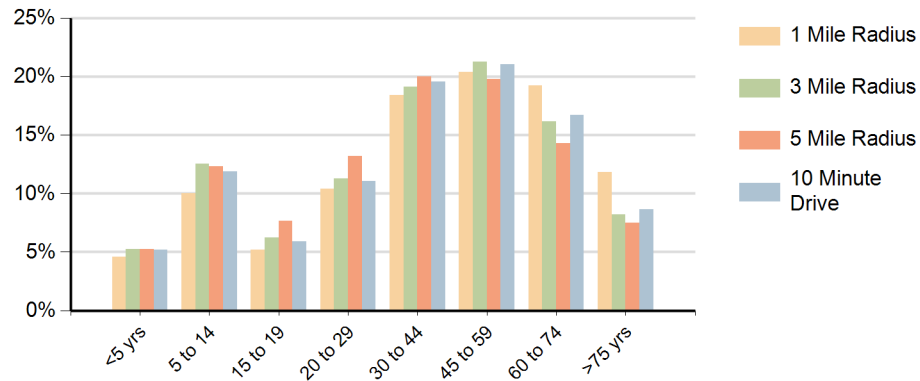


Race (10 Minute Drive)

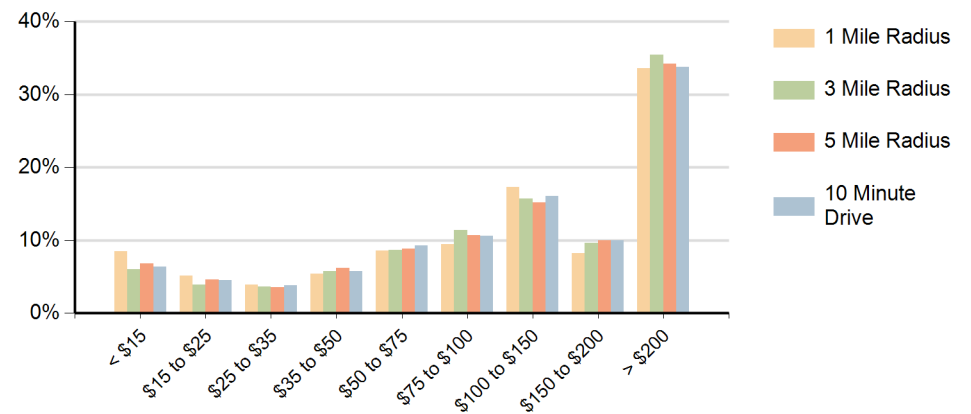


Hispanic Origin (31.6%)

### Population by Age Range



### Households by Income Range (\$000)



Greenwich Commons Greenwich, Connecticut		1 Mile Radius	3 Mile Radius	5 Mile Radius	10 Minute Drive
Population	Current Estimated Population	11,148	73,787	158,215	55,011
	2020 Census Population	11,146	73,765	153,872	54,968
	2010 Census Population	10,743	69,604	141,949	51,724
	Historical Annual Growth 2010 to 2020	0.4%	0.6%	0.8%	0.6%
	Estimated Annual Growth 2020 to 2024	0.0%	0.0%	0.7%	0.0%
	Projected Annual Growth 2024 to 2029	-0.3%	0.2%	0.4%	0.1%
Households	Current Estimated Households	5,071	27,012	56,815	20,939
	2020 Census Households	5,061	26,888	54,640	20,800
	2010 Census Households	5,028	25,477	49,407	19,703
	Historical Annual Growth 2010 to 2020	0.1%	0.5%	1.0%	0.5%
	Estimated Annual Growth 2020 to 2024	0.1%	0.1%	0.9%	0.2%
	Projected Annual Growth 2024 to 2029	0.0%	0.2%	0.6%	0.2%
Race	Population per Household	2.2	2.7	2.7	2.6
	White	66.9%	57.7%	54.9%	57.7%
	Black or African American	4.2%	2.8%	7.0%	3.6%
	American Indian	0.4%	0.9%	0.9%	0.9%
	Asian	8.3%	5.8%	7.2%	6.2%
	Pacific Islander	0.0%	0.0%	0.0%	0.0%
	2 or More Races	12.0%	14.0%	12.9%	13.8%
	Other Races	8.3%	18.8%	17.2%	17.8%
Hispanic Origin		18.4%	33.2%	30.8%	31.6%