

Sunny Valley Shops
New Milford, Connecticut

1 Mile Radius

3 Mile Radius

5 Mile Radius

10 Minute Drive

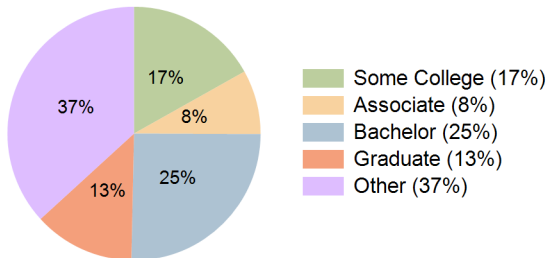
Current Year Demographics

Current Population	3,247	15,286	31,711	12,467
Total Daytime Pop	4,735	14,565	26,698	13,309
Daytime Workers	3,407	7,953	12,075	8,061
Average Household Income	\$109,824	\$116,451	\$137,474	\$107,698
Median Household Income	\$87,960	\$89,186	\$100,995	\$84,718
Total Households	1,327	6,307	12,783	5,263
Median Home Value	\$299,585	\$364,017	\$424,225	\$350,469
Bachelors Degree	31.2%	27.0%	28.4%	25.3%
Graduate Degree	10.7%	14.8%	16.2%	12.9%
Consumer Spending Index	97	102	120	95

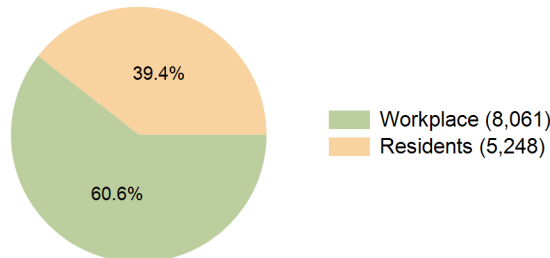
2029 Demographic Projections

Projected Population	3,161	14,936	31,237	12,174
Projected 5 Year Annual Growth Rate (Pop)	-0.5%	-0.5%	-0.3%	-0.5%
Projected Households	1,316	6,281	12,828	5,236
Projected 5 Year Annual Growth Rate (HH)	-0.2%	-0.1%	0.1%	-0.1%

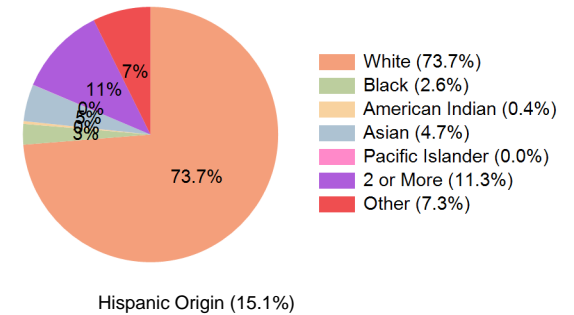
Education (10 Minute Drive)



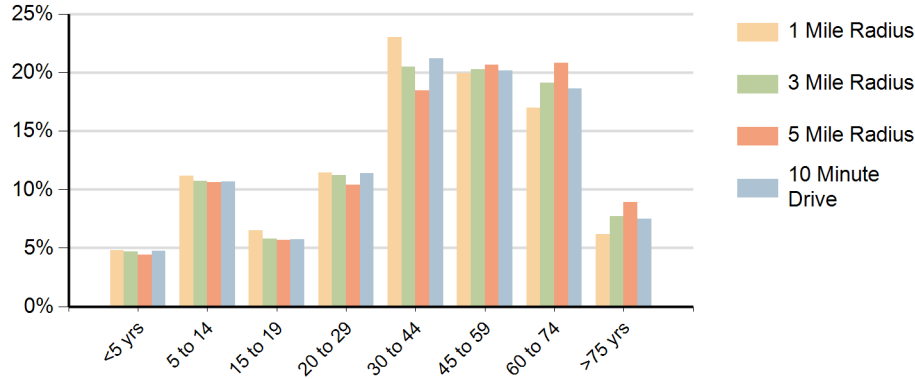
Daytime Population (10 Minute Drive)



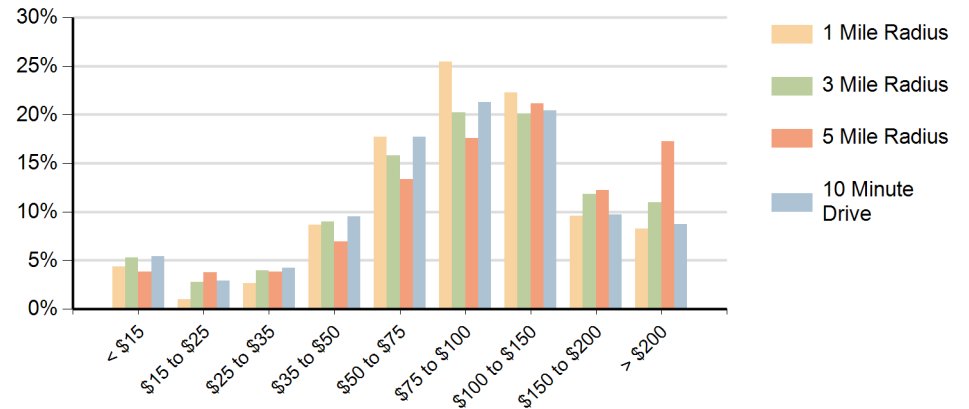
Race (10 Minute Drive)



Population by Age Range



Households by Income Range (\$000)



Sunny Valley Shops New Milford, Connecticut		1 Mile Radius	3 Mile Radius	5 Mile Radius	10 Minute Drive
Population	Current Estimated Population	3,247	15,286	31,711	12,467
	2020 Census Population	3,295	15,465	32,053	12,635
	2010 Census Population	3,142	15,149	31,952	12,264
	Historical Annual Growth 2010 to 2020	0.5%	0.2%	0.0%	0.3%
	Estimated Annual Growth 2020 to 2024	-0.3%	-0.3%	-0.3%	-0.3%
	Projected Annual Growth 2024 to 2029	-0.5%	-0.5%	-0.3%	-0.5%
Households	Current Estimated Households	1,327	6,307	12,783	5,263
	2020 Census Households	1,334	6,322	12,769	5,278
	2010 Census Households	1,240	6,053	12,309	5,022
	Historical Annual Growth 2010 to 2020	0.7%	0.4%	0.4%	0.5%
	Estimated Annual Growth 2020 to 2024	-0.1%	-0.1%	0.0%	-0.1%
	Projected Annual Growth 2024 to 2029	-0.2%	-0.1%	0.1%	-0.1%
Population per Household		2.5	2.4	2.5	2.4
Race	White	70.5%	75.1%	79.4%	73.7%
	Black or African American	2.9%	2.5%	2.2%	2.6%
	American Indian	0.5%	0.4%	0.3%	0.4%
	Asian	5.3%	4.5%	3.6%	4.7%
	Pacific Islander	0.0%	0.0%	0.0%	0.0%
	2 or More Races	12.3%	11.0%	9.9%	11.3%
	Other Races	8.5%	6.6%	4.7%	7.3%
	Hispanic Origin	17.5%	14.2%	11.4%	15.1%