

New Milford Plaza
New Milford, Connecticut

1 Mile Radius

3 Mile Radius

5 Mile Radius

10 Minute Drive

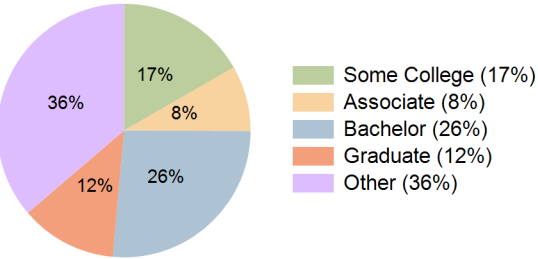
Current Year Demographics

Current Population	2,312	15,604	32,546	11,286
Total Daytime Pop	4,220	14,890	27,170	12,679
Daytime Workers	3,273	8,272	12,160	7,931
Average Household Income	\$110,261	\$119,140	\$138,956	\$112,093
Median Household Income	\$87,006	\$90,972	\$101,298	\$86,210
Total Households	953	6,487	13,069	4,871
Median Home Value	\$307,921	\$370,284	\$433,027	\$357,856
Bachelors Degree	27.9%	27.8%	28.7%	26.4%
Graduate Degree	10.6%	15.1%	16.5%	12.3%
Consumer Spending Index	97	104	121	98

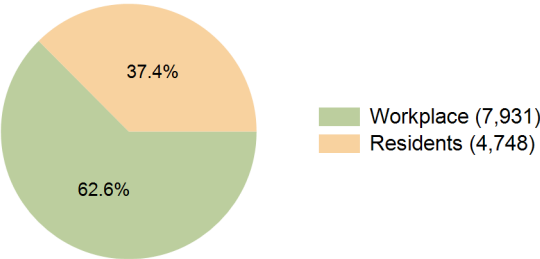
2029 Demographic Projections

Projected Population	2,251	15,249	32,082	11,070
Projected 5 Year Annual Growth Rate (Pop)	-0.5%	-0.5%	-0.3%	-0.4%
Projected Households	945	6,461	13,124	4,875
Projected 5 Year Annual Growth Rate (HH)	-0.2%	-0.1%	0.1%	0.0%

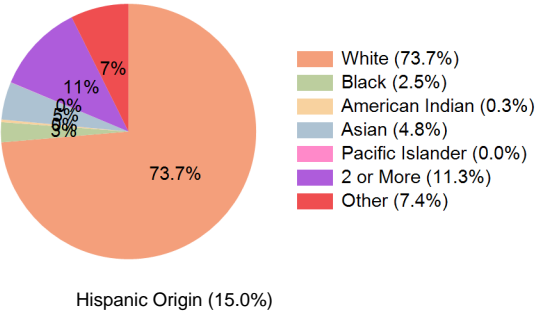
Education (10 Minute Drive)



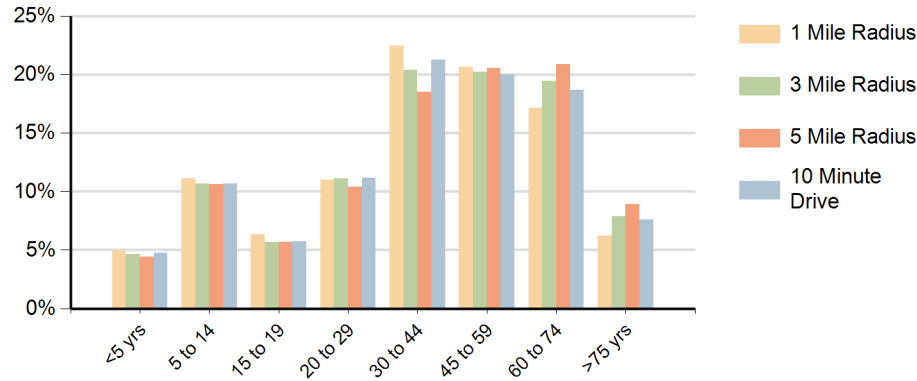
Daytime Population (10 Minute Drive)



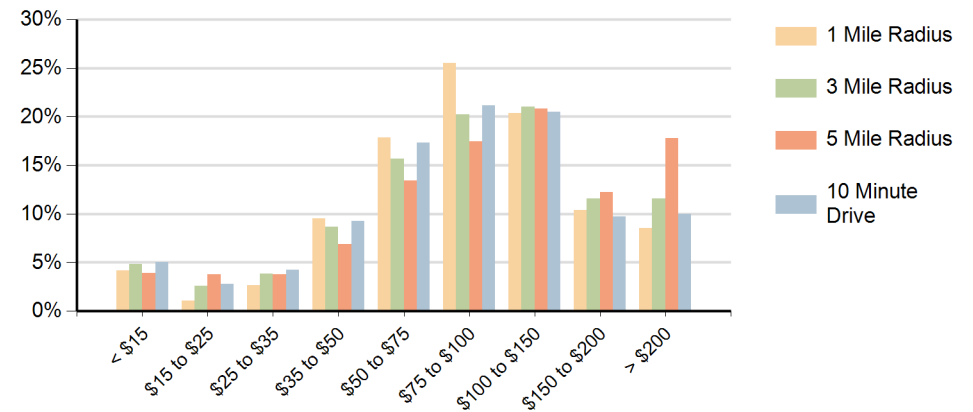
Race (10 Minute Drive)



Population by Age Range



Households by Income Range (\$000)



New Milford Plaza New Milford, Connecticut		1 Mile Radius	3 Mile Radius	5 Mile Radius	10 Minute Drive
Population	Current Estimated Population	2,312	15,604	32,546	11,286
	2020 Census Population	2,342	15,770	32,880	11,390
	2010 Census Population	2,264	15,465	32,686	11,002
	Historical Annual Growth 2010 to 2020	0.3%	0.2%	0.1%	0.4%
	Estimated Annual Growth 2020 to 2024	-0.3%	-0.3%	-0.2%	-0.2%
	Projected Annual Growth 2024 to 2029	-0.5%	-0.5%	-0.3%	-0.4%
Households	Current Estimated Households	953	6,487	13,069	4,871
	2020 Census Households	957	6,503	13,052	4,884
	2010 Census Households	899	6,237	12,559	4,620
	Historical Annual Growth 2010 to 2020	0.6%	0.4%	0.4%	0.6%
	Estimated Annual Growth 2020 to 2024	-0.1%	-0.1%	0.0%	-0.1%
	Projected Annual Growth 2024 to 2029	-0.2%	-0.1%	0.1%	0.0%
Race	Population per Household	2.4	2.4	2.5	2.3
	White	71.1%	75.3%	79.4%	73.7%
	Black or African American	2.8%	2.5%	2.2%	2.5%
	American Indian	0.4%	0.4%	0.3%	0.3%
	Asian	5.7%	4.5%	3.6%	4.8%
	Pacific Islander	0.0%	0.0%	0.0%	0.0%
	2 or More Races	11.8%	10.9%	9.9%	11.3%
	Other Races	8.2%	6.4%	4.6%	7.4%
Hispanic Origin		16.4%	13.9%	11.4%	15.0%