

Shelton Square  
Shelton, Connecticut

1 Mile Radius

3 Mile Radius

5 Mile Radius

10 Minute Drive

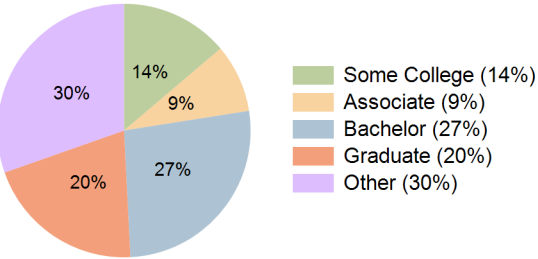
Current Year Demographics

Current Population	2,630	35,709	153,863	51,647
Total Daytime Pop	12,703	50,759	149,585	61,095
Daytime Workers	11,458	33,909	77,968	37,351
Average Household Income	\$140,103	\$157,503	\$140,622	\$141,694
Median Household Income	\$111,054	\$127,151	\$109,229	\$112,584
Total Households	1,223	14,164	60,833	20,670
Median Home Value	\$576,180	\$491,245	\$425,576	\$439,574
Bachelors Degree	30.2%	29.0%	25.2%	26.7%
Graduate Degree	31.0%	22.5%	19.3%	20.4%
Consumer Spending Index	119	133	120	121

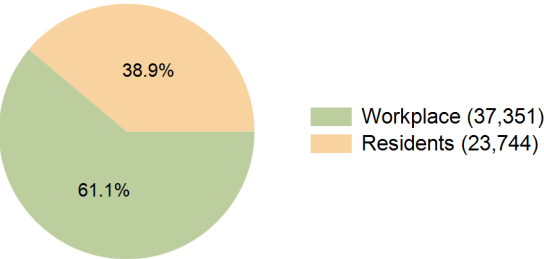
2030 Demographic Projections

Projected Population	2,590	35,786	154,795	52,491
Projected 5 Year Annual Growth Rate (Pop)	-0.3%	0.0%	0.1%	0.3%
Projected Households	1,227	14,369	62,019	21,304
Projected 5 Year Annual Growth Rate (HH)	0.1%	0.3%	0.4%	0.6%

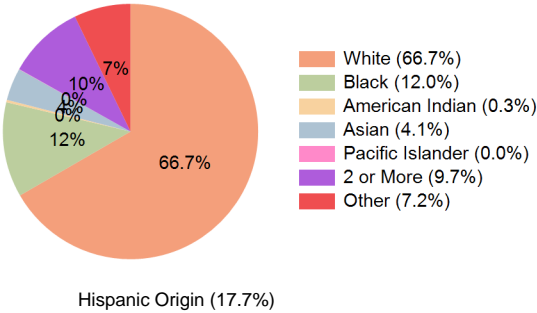
Education (10 Minute Drive)



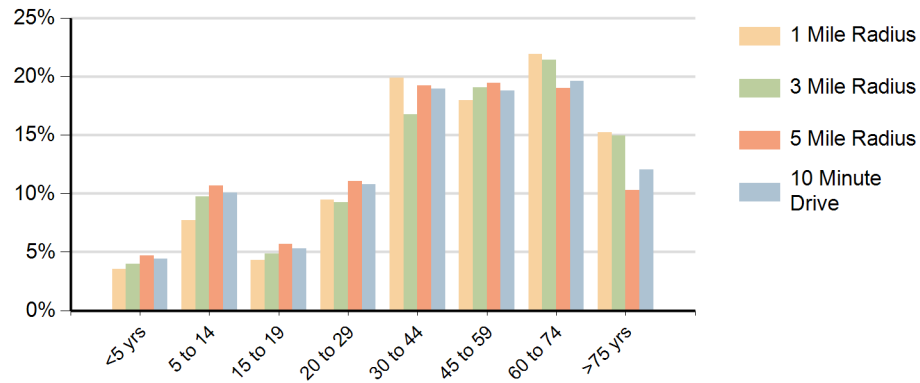
Daytime Population (10 Minute Drive)



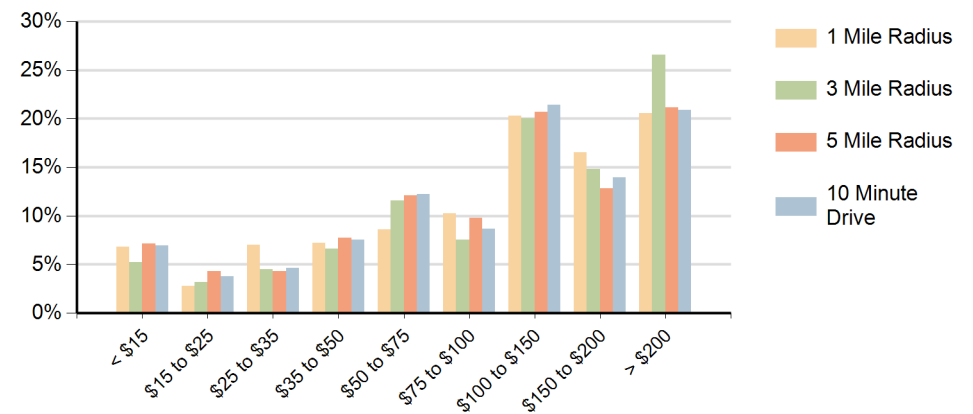
Race (10 Minute Drive)



### Population by Age Range



### Households by Income Range (\$000)



Shelton Square Shelton, Connecticut		1 Mile Radius	3 Mile Radius	5 Mile Radius	10 Minute Drive
Population	Current Estimated Population	2,630	35,709	153,863	51,647
	2020 Census Population	2,694	35,563	152,823	51,078
	2010 Census Population	1,895	34,032	150,068	48,888
	Historical Annual Growth 2010 to 2020	3.6%	0.4%	0.2%	0.4%
	Estimated Annual Growth 2020 to 2025	-0.5%	0.1%	0.1%	0.2%
	Projected Annual Growth 2025 to 2030	-0.3%	0.0%	0.1%	0.3%
Households	Current Estimated Households	1,223	14,164	60,833	20,670
	2020 Census Households	1,213	13,842	59,255	20,054
	2010 Census Households	817	13,099	57,531	19,002
	Historical Annual Growth 2010 to 2020	4.0%	0.6%	0.3%	0.5%
	Estimated Annual Growth 2020 to 2025	0.2%	0.4%	0.5%	0.6%
	Projected Annual Growth 2025 to 2030	0.1%	0.3%	0.4%	0.6%
Race	Population per Household	2.1	2.5	2.5	2.5
	White	73.2%	76.8%	62.8%	66.7%
	Black or African American	8.7%	7.0%	14.3%	12.0%
	American Indian	0.1%	0.2%	0.3%	0.3%
	Asian	6.2%	4.5%	5.0%	4.1%
	Pacific Islander	0.0%	0.0%	0.0%	0.0%
	2 or More Races	8.4%	7.8%	10.1%	9.7%
	Other Races	3.4%	3.7%	7.5%	7.2%
Hispanic Origin		10.2%	10.9%	18.5%	17.7%