

970 High Ridge Road
Stamford, Connecticut

1 Mile Radius

3 Mile Radius

5 Mile Radius

10 Minute Drive

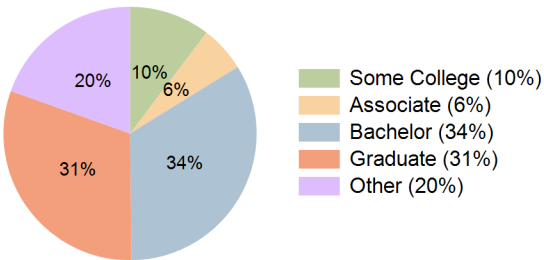
Current Year Demographics

Current Population	6,977	60,823	191,199	70,498
Total Daytime Pop	8,933	59,720	204,856	80,692
Daytime Workers	5,625	31,870	118,500	49,790
Average Household Income	\$234,979	\$227,463	\$223,546	\$196,683
Median Household Income	\$160,139	\$144,445	\$123,895	\$123,250
Total Households	2,577	22,780	74,050	28,476
Median Home Value	\$707,537	\$711,897	\$813,682	\$692,764
Bachelors Degree	29.4%	33.1%	32.5%	33.6%
Graduate Degree	31.7%	31.2%	28.5%	30.6%
Consumer Spending Index	195	190	189	166

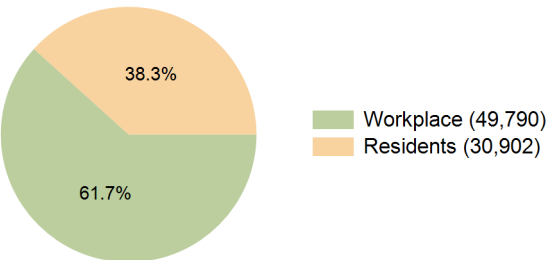
2030 Demographic Projections

Projected Population	6,856	60,085	191,940	70,638
Projected 5 Year Annual Growth Rate (Pop)	-0.4%	-0.2%	0.1%	0.0%
Projected Households	2,557	22,698	75,331	28,958
Projected 5 Year Annual Growth Rate (HH)	-0.2%	-0.1%	0.3%	0.3%

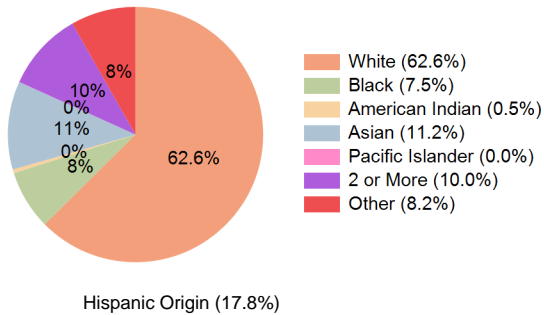
Education (10 Minute Drive)



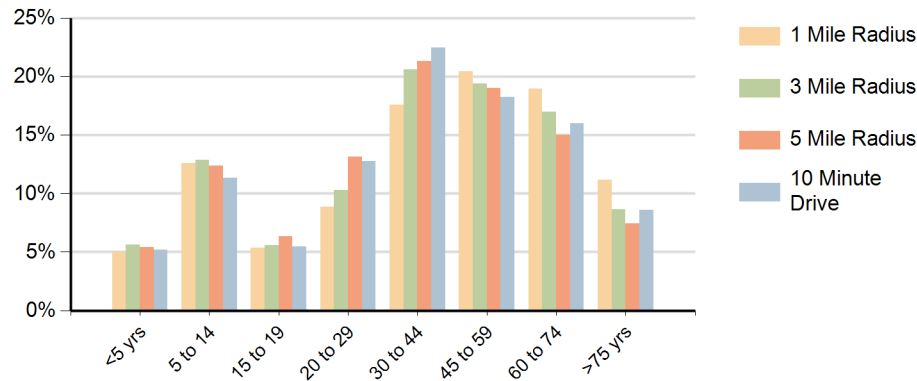
Daytime Population (10 Minute Drive)



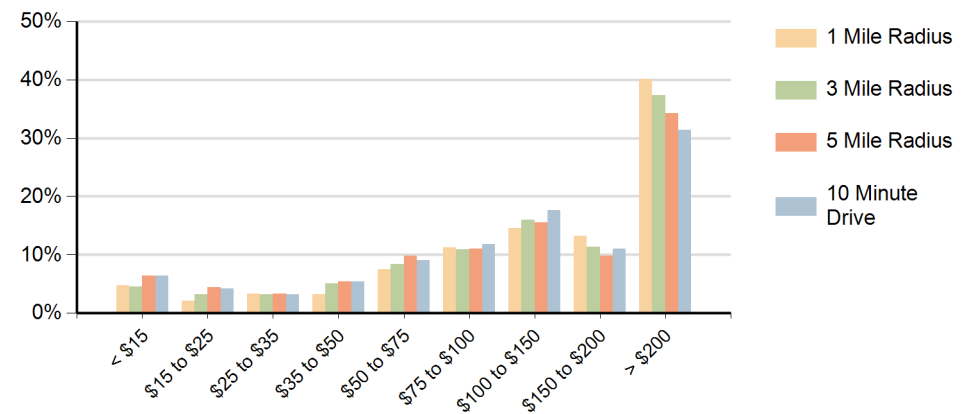
Race (10 Minute Drive)



Population by Age Range



Households by Income Range (\$000)



970 High Ridge Road Stamford, Connecticut		1 Mile Radius	3 Mile Radius	5 Mile Radius	10 Minute Drive
Population	Current Estimated Population	6,977	60,823	191,199	70,498
	2020 Census Population	7,100	61,363	186,934	70,053
	2010 Census Population	7,152	59,735	171,906	64,719
	Historical Annual Growth 2010 to 2020	-0.1%	0.3%	0.8%	0.8%
	Estimated Annual Growth 2020 to 2025	-0.3%	-0.2%	0.4%	0.1%
	Projected Annual Growth 2025 to 2030	-0.4%	-0.2%	0.1%	0.0%
Households	Current Estimated Households	2,577	22,780	74,050	28,476
	2020 Census Households	2,585	22,643	70,428	27,616
	2010 Census Households	2,595	22,413	64,454	25,855
	Historical Annual Growth 2010 to 2020	0.0%	0.1%	0.9%	0.7%
	Estimated Annual Growth 2020 to 2025	-0.1%	0.1%	1.0%	0.6%
	Projected Annual Growth 2025 to 2030	-0.2%	-0.1%	0.3%	0.3%
Race	Population per Household	2.7	2.6	2.6	2.4
	White	71.2%	66.3%	57.9%	62.6%
	Black or African American	4.4%	5.7%	9.0%	7.5%
	American Indian	0.3%	0.5%	0.7%	0.5%
	Asian	9.4%	9.4%	8.7%	11.2%
	Pacific Islander	0.0%	0.0%	0.0%	0.0%
	2 or More Races	9.5%	10.2%	11.6%	10.0%
	Other Races	5.3%	7.8%	12.1%	8.2%
Hispanic Origin		13.8%	17.3%	24.0%	17.8%