

111 Kraft Avenue
Bronxville, New York

1 Mile Radius

3 Mile Radius

5 Mile Radius

10 Minute Drive

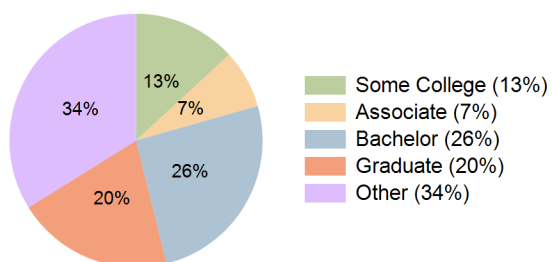
Current Year Demographics

Current Population	26,170	265,247	706,528	205,322
Total Daytime Pop	23,238	217,683	615,744	166,547
Daytime Workers	10,027	83,163	244,221	63,663
Average Household Income	\$227,173	\$148,811	\$142,322	\$143,901
Median Household Income	\$143,481	\$100,999	\$85,014	\$97,767
Total Households	10,782	99,175	264,602	81,062
Median Home Value	\$751,013	\$639,266	\$657,424	\$635,579
Bachelors Degree	32.7%	24.9%	22.6%	25.5%
Graduate Degree	33.5%	20.1%	20.0%	20.0%
Consumer Spending Index	192	127	122	123

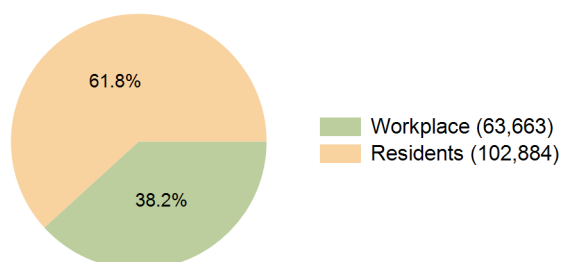
2030 Demographic Projections

Projected Population	26,220	265,538	712,797	205,020
Projected 5 Year Annual Growth Rate (Pop)	0.0%	0.0%	0.2%	0.0%
Projected Households	10,744	98,837	268,120	80,809
Projected 5 Year Annual Growth Rate (HH)	-0.1%	-0.1%	0.3%	-0.1%

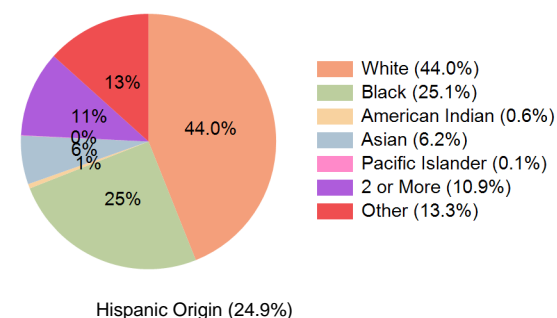
Education (10 Minute Drive)



Daytime Population (10 Minute Drive)

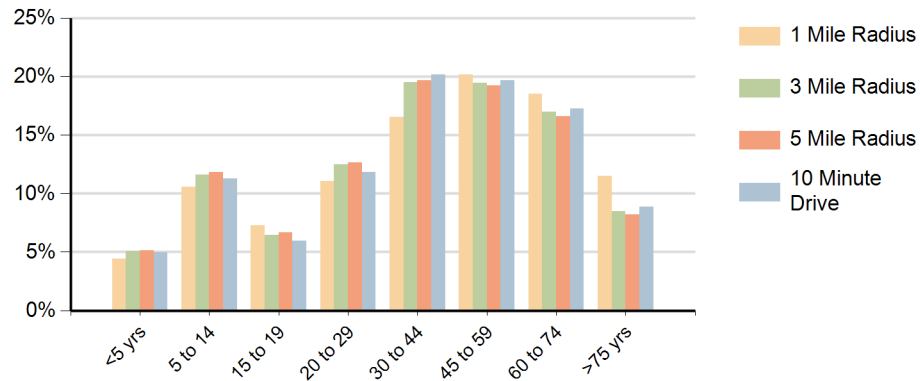


Race (10 Minute Drive)

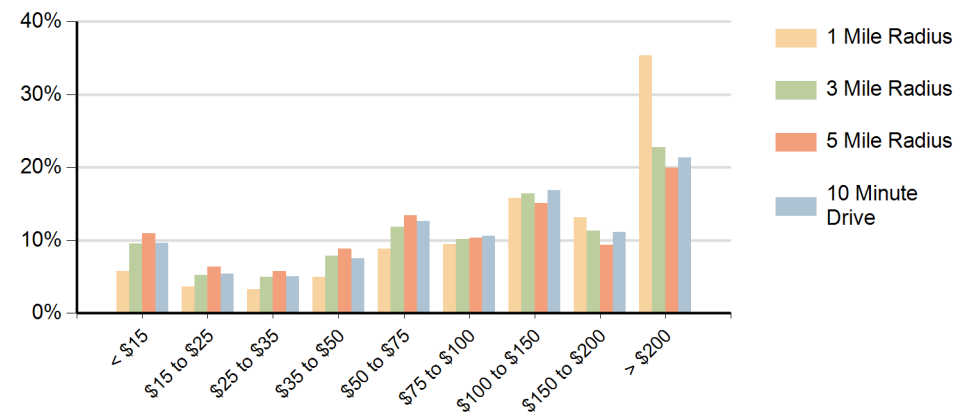


Hispanic Origin (24.9%)

Population by Age Range



Households by Income Range (\$000)



111 Kraft Avenue Bronxville, New York		1 Mile Radius	3 Mile Radius	5 Mile Radius	10 Minute Drive
Population	Current Estimated Population	26,170	265,247	706,528	205,322
	2020 Census Population	25,892	267,582	713,988	208,394
	2010 Census Population	24,622	249,128	666,411	194,918
	Historical Annual Growth 2010 to 2020	0.5%	0.7%	0.7%	0.7%
	Estimated Annual Growth 2020 to 2025	0.2%	-0.2%	-0.2%	-0.3%
	Projected Annual Growth 2025 to 2030	0.0%	0.0%	0.2%	0.0%
Households	Current Estimated Households	10,782	99,175	264,602	81,062
	2020 Census Households	10,902	100,217	265,062	81,776
	2010 Census Households	10,558	95,219	249,526	78,345
	Historical Annual Growth 2010 to 2020	0.3%	0.5%	0.6%	0.4%
	Estimated Annual Growth 2020 to 2025	-0.2%	-0.2%	0.0%	-0.2%
	Projected Annual Growth 2025 to 2030	-0.1%	-0.1%	0.3%	-0.1%
Race	Population per Household	2.3	2.6	2.6	2.5
	White	70.2%	39.8%	32.2%	44.0%
	Black or African American	8.1%	28.0%	32.1%	25.1%
	American Indian	0.2%	0.7%	0.9%	0.6%
	Asian	7.5%	5.9%	5.9%	6.2%
	Pacific Islander	0.0%	0.0%	0.1%	0.1%
	2 or More Races	8.9%	11.0%	11.2%	10.9%
	Other Races	5.0%	14.6%	17.6%	13.3%
Hispanic Origin		13.0%	26.8%	31.1%	24.9%