

Carmel ShopRite Plaza
Carmel, New York

1 Mile Radius

3 Mile Radius

5 Mile Radius

10 Minute Drive

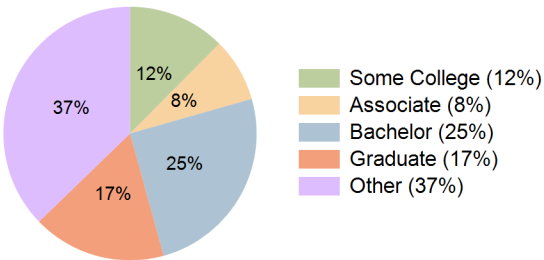
Current Year Demographics

Current Population	4,290	18,354	41,951	14,970
Total Daytime Pop	4,069	15,590	35,407	13,365
Daytime Workers	1,763	5,990	14,457	5,694
Average Household Income	\$138,943	\$137,037	\$144,248	\$130,306
Median Household Income	\$113,032	\$107,678	\$112,106	\$104,129
Total Households	1,624	7,097	15,831	5,924
Median Home Value	\$451,542	\$437,244	\$452,226	\$404,409
Bachelors Degree	21.6%	25.3%	25.6%	25.1%
Graduate Degree	18.7%	18.1%	17.8%	17.1%
Consumer Spending Index	120	119	125	113

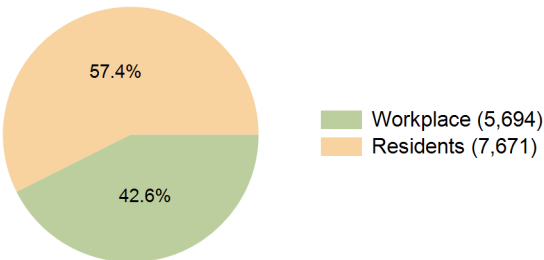
2029 Demographic Projections

Projected Population	4,281	18,270	41,654	14,904
Projected 5 Year Annual Growth Rate (Pop)	0.0%	-0.1%	-0.1%	-0.1%
Projected Households	1,666	7,265	16,146	6,066
Projected 5 Year Annual Growth Rate (HH)	0.5%	0.5%	0.4%	0.5%

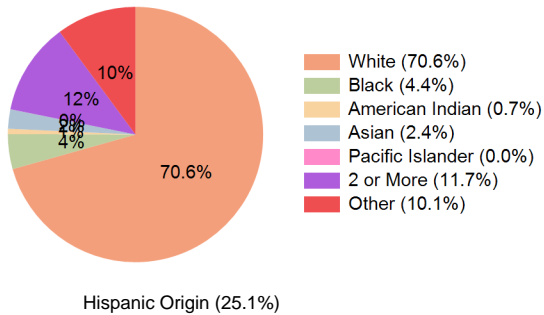
Education (10 Minute Drive)



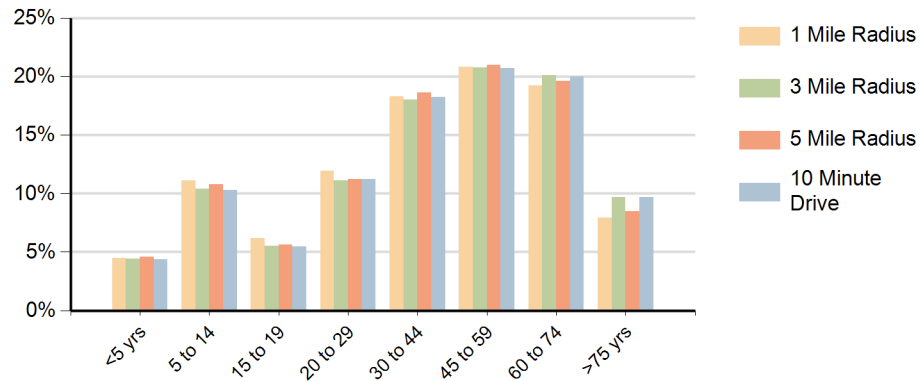
Daytime Population (10 Minute Drive)



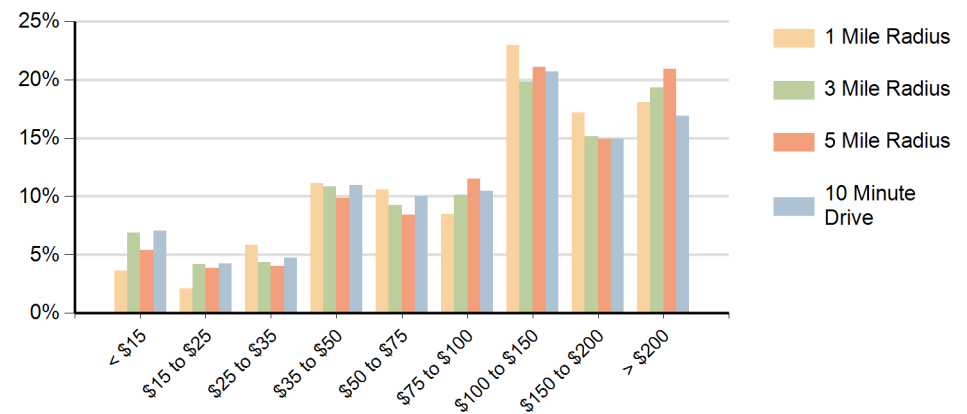
Race (10 Minute Drive)



Population by Age Range



Households by Income Range (\$000)



Carmel ShopRite Plaza Carmel, New York		1 Mile Radius	3 Mile Radius	5 Mile Radius	10 Minute Drive
Population	Current Estimated Population	4,290	18,354	41,951	14,970
	2020 Census Population	4,263	18,456	42,460	15,059
	2010 Census Population	4,382	18,800	43,289	15,273
	Historical Annual Growth 2010 to 2020	-0.3%	-0.2%	-0.2%	-0.1%
	Estimated Annual Growth 2020 to 2024	0.2%	-0.1%	-0.3%	-0.1%
	Projected Annual Growth 2024 to 2029	0.0%	-0.1%	-0.1%	-0.1%
Households	Current Estimated Households	1,624	7,097	15,831	5,924
	2020 Census Households	1,601	7,019	15,706	5,851
	2010 Census Households	1,511	6,810	15,513	5,640
	Historical Annual Growth 2010 to 2020	0.6%	0.3%	0.1%	0.4%
	Estimated Annual Growth 2020 to 2024	0.3%	0.3%	0.2%	0.3%
	Projected Annual Growth 2024 to 2029	0.5%	0.5%	0.4%	0.5%
Race	Population per Household	2.6	2.5	2.6	2.5
	White	71.9%	72.1%	71.2%	70.6%
	Black or African American	4.1%	4.2%	3.7%	4.4%
	American Indian	0.5%	0.6%	0.6%	0.7%
	Asian	2.7%	2.6%	2.5%	2.4%
	Pacific Islander	0.0%	0.0%	0.0%	0.0%
	2 or More Races	11.0%	11.3%	11.8%	11.7%
	Other Races	9.7%	9.2%	10.3%	10.1%
Hispanic Origin		24.6%	23.3%	24.4%	25.1%