

New City PCSB Bank Pad
New City, New York

1 Mile Radius

3 Mile Radius

5 Mile Radius

10 Minute Drive

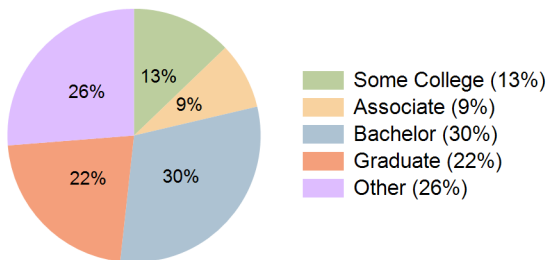
Current Year Demographics

Current Population	9,983	67,968	227,242	68,426
Total Daytime Pop	12,831	61,859	202,261	63,626
Daytime Workers	7,357	26,335	77,616	27,930
Average Household Income	\$184,016	\$190,405	\$145,541	\$184,209
Median Household Income	\$148,652	\$147,377	\$99,402	\$140,171
Total Households	3,329	20,031	66,440	20,335
Median Home Value	\$607,746	\$633,521	\$603,876	\$629,394
Bachelors Degree	33.3%	30.3%	24.4%	30.4%
Graduate Degree	27.9%	23.2%	16.9%	22.0%
Consumer Spending Index	157	163	127	158

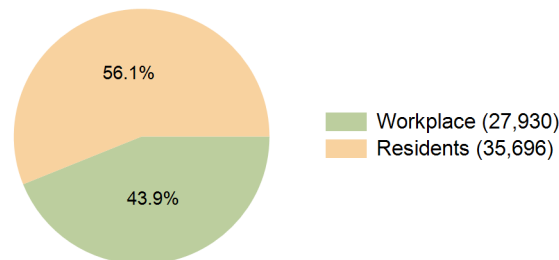
2029 Demographic Projections

Projected Population	9,902	67,833	230,313	68,297
Projected 5 Year Annual Growth Rate (Pop)	-0.2%	0.0%	0.3%	0.0%
Projected Households	3,324	20,097	67,504	20,404
Projected 5 Year Annual Growth Rate (HH)	0.0%	0.1%	0.3%	0.1%

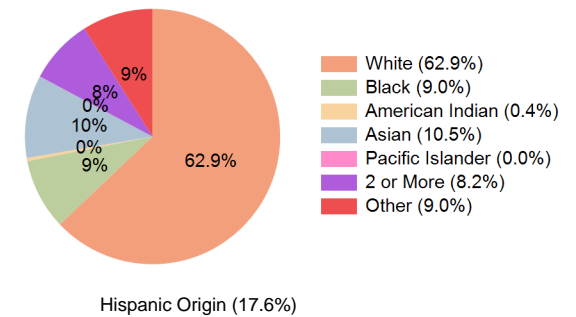
Education (10 Minute Drive)



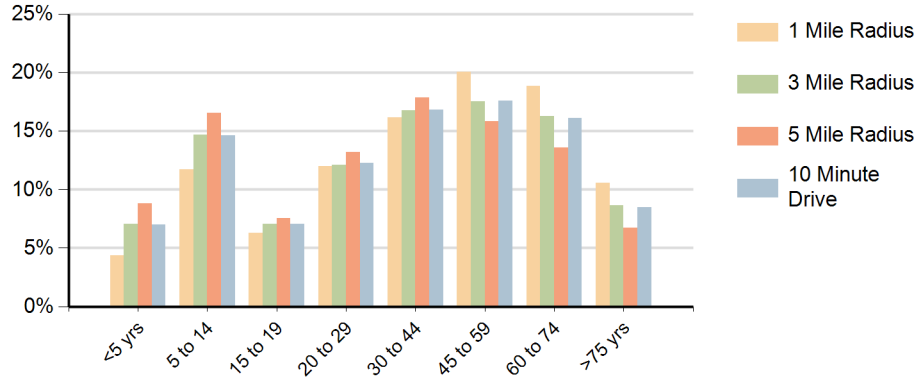
Daytime Population (10 Minute Drive)



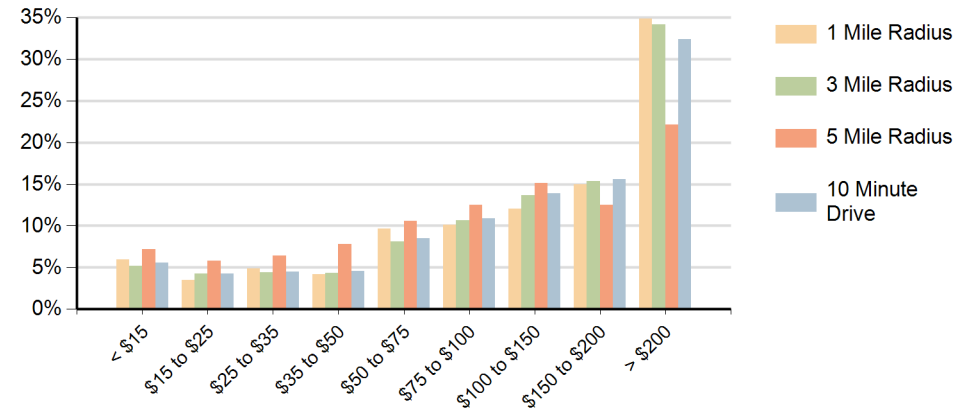
Race (10 Minute Drive)



Population by Age Range



Households by Income Range (\$000)



New City PCSB Bank Pad New City, New York		1 Mile Radius	3 Mile Radius	5 Mile Radius	10 Minute Drive
Population	Current Estimated Population	9,983	67,968	227,242	68,426
	2020 Census Population	10,077	68,025	224,033	68,567
	2010 Census Population	10,036	63,570	204,091	63,972
	Historical Annual Growth 2010 to 2020	0.0%	0.7%	0.9%	0.7%
	Estimated Annual Growth 2020 to 2024	-0.2%	0.0%	0.3%	-0.1%
	Projected Annual Growth 2024 to 2029	-0.2%	0.0%	0.3%	0.0%
Households	Current Estimated Households	3,329	20,031	66,440	20,335
	2020 Census Households	3,335	19,962	65,206	20,270
	2010 Census Households	3,421	19,444	61,855	19,663
	Historical Annual Growth 2010 to 2020	-0.3%	0.3%	0.5%	0.3%
	Estimated Annual Growth 2020 to 2024	0.0%	0.1%	0.4%	0.1%
	Projected Annual Growth 2024 to 2029	0.0%	0.1%	0.3%	0.1%
Population per Household		2.9	3.3	3.4	3.3
Race	White	64.6%	63.4%	56.8%	62.9%
	Black or African American	5.5%	8.9%	12.8%	9.0%
	American Indian	0.4%	0.4%	0.6%	0.4%
	Asian	13.2%	10.4%	6.6%	10.5%
	Pacific Islander	0.0%	0.0%	0.0%	0.0%
	2 or More Races	8.7%	8.2%	8.8%	8.2%
	Other Races	7.6%	8.7%	14.5%	9.0%
	Hispanic Origin	17.4%	17.2%	24.2%	17.6%