

**Somers Commons**  
Somers, New York

**1 Mile Radius**

**3 Mile Radius**

**5 Mile Radius**

**10 Minute Drive**

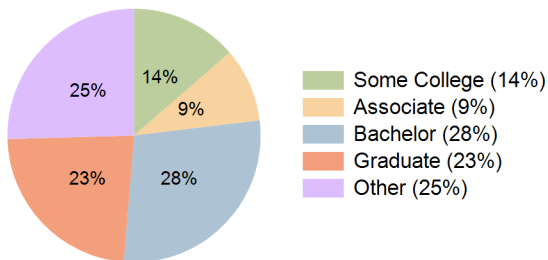
### Current Year Demographics

Current Population	4,674	34,109	72,230	29,453
Total Daytime Pop	4,276	27,385	57,509	23,053
Daytime Workers	2,115	10,242	21,764	8,461
Average Household Income	\$156,510	\$170,941	\$186,793	\$171,342
Median Household Income	\$117,249	\$122,755	\$133,838	\$123,981
Total Households	1,829	12,839	26,144	10,763
Median Home Value	\$574,901	\$547,900	\$572,707	\$542,182
Bachelors Degree	29.4%	27.4%	29.9%	28.2%
Graduate Degree	19.3%	24.1%	25.0%	23.3%
Consumer Spending Index	135	147	160	147

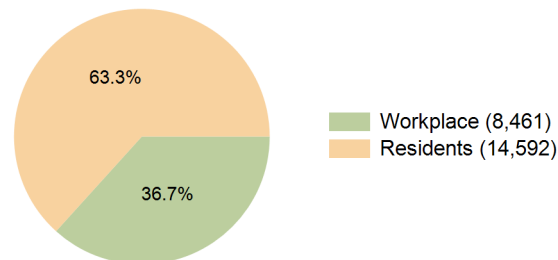
### 2029 Demographic Projections

Projected Population	4,673	33,929	71,910	29,296
Projected 5 Year Annual Growth Rate (Pop)	0.0%	-0.1%	-0.1%	-0.1%
Projected Households	1,854	12,849	26,126	10,783
Projected 5 Year Annual Growth Rate (HH)	0.3%	0.0%	0.0%	0.0%

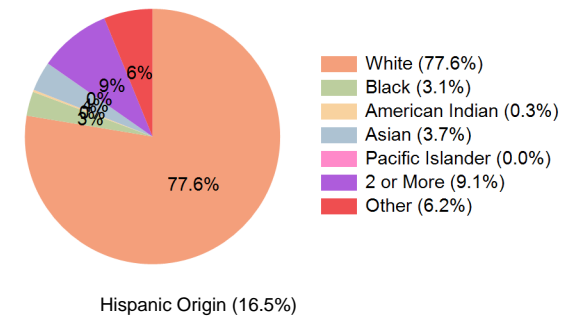
**Education (10 Minute Drive)**



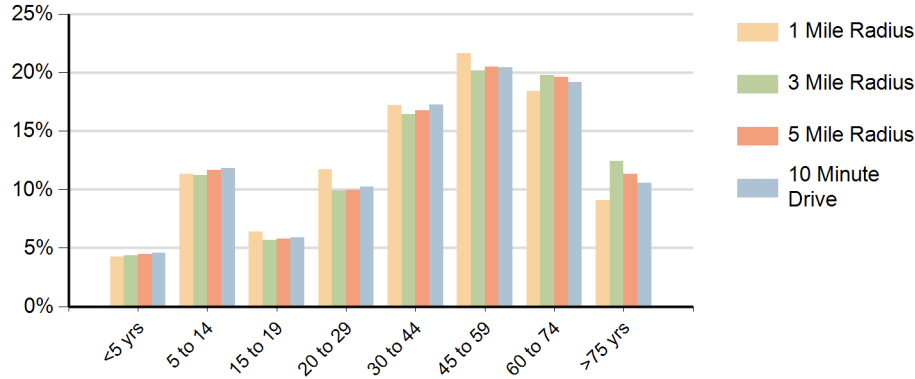
**Daytime Population (10 Minute Drive)**



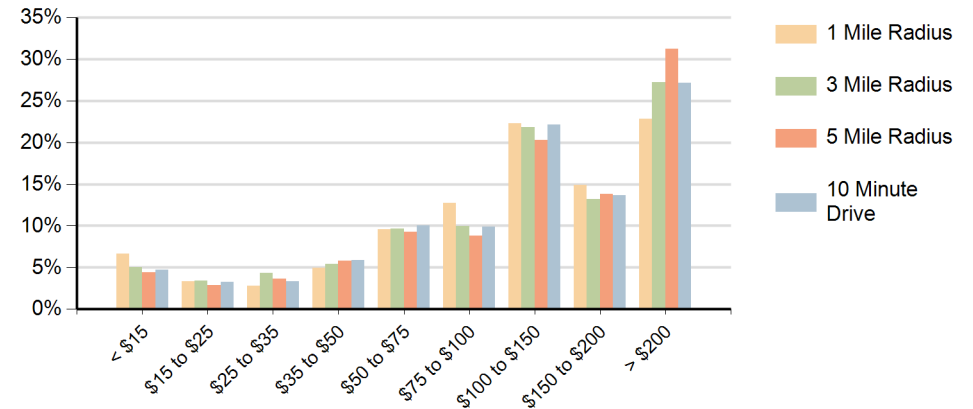
**Race (10 Minute Drive)**



## Population by Age Range



## Households by Income Range (\$000)



Somers Commons Somers, New York		1 Mile Radius	3 Mile Radius	5 Mile Radius	10 Minute Drive
Population	Current Estimated Population	4,674	34,109	72,230	29,453
	2020 Census Population	4,631	34,138	72,344	29,536
	2010 Census Population	4,362	34,169	71,673	29,177
	Historical Annual Growth 2010 to 2020	0.6%	0.0%	0.1%	0.1%
	Estimated Annual Growth 2020 to 2024	0.2%	0.0%	0.0%	-0.1%
	Projected Annual Growth 2024 to 2029	0.0%	-0.1%	-0.1%	-0.1%
Households	Current Estimated Households	1,829	12,839	26,144	10,763
	2020 Census Households	1,811	12,903	26,262	10,791
	2010 Census Households	1,511	12,508	25,311	10,281
	Historical Annual Growth 2010 to 2020	1.8%	0.3%	0.4%	0.5%
	Estimated Annual Growth 2020 to 2024	0.2%	-0.1%	-0.1%	-0.1%
	Projected Annual Growth 2024 to 2029	0.3%	0.0%	0.0%	0.0%
Population per Household		2.6	2.6	2.7	2.7
Race	White	77.8%	78.9%	79.2%	77.6%
	Black or African American	2.3%	2.7%	2.8%	3.1%
	American Indian	0.3%	0.2%	0.3%	0.3%
	Asian	2.9%	3.4%	3.8%	3.7%
	Pacific Islander	0.0%	0.0%	0.0%	0.0%
	2 or More Races	9.0%	8.9%	8.7%	9.1%
	Other Races	7.7%	5.8%	5.3%	6.2%
	Hispanic Origin	18.3%	15.3%	14.5%	16.5%