

Tanglewood Shopping Center
Yonkers, New York

1 Mile Radius

3 Mile Radius

5 Mile Radius

10 Minute Drive

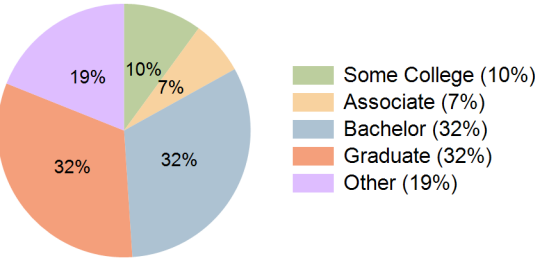
Current Year Demographics

Current Population	17,883	141,844	454,320	76,455
Total Daytime Pop	14,347	130,614	401,878	64,397
Daytime Workers	5,367	62,354	174,600	27,761
Average Household Income	\$156,509	\$197,493	\$161,289	\$190,000
Median Household Income	\$105,632	\$132,454	\$103,109	\$125,109
Total Households	6,343	53,247	168,535	30,423
Median Home Value	\$688,685	\$761,778	\$715,660	\$734,774
Bachelors Degree	32.3%	30.2%	25.2%	32.0%
Graduate Degree	21.5%	31.7%	26.1%	32.1%
Consumer Spending Index	135	170	141	164

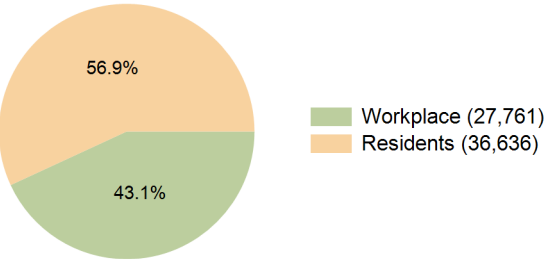
2029 Demographic Projections

Projected Population	18,099	141,480	458,383	76,481
Projected 5 Year Annual Growth Rate (Pop)	0.2%	-0.1%	0.2%	0.0%
Projected Households	6,362	52,637	168,977	30,148
Projected 5 Year Annual Growth Rate (HH)	0.1%	-0.2%	0.1%	-0.2%

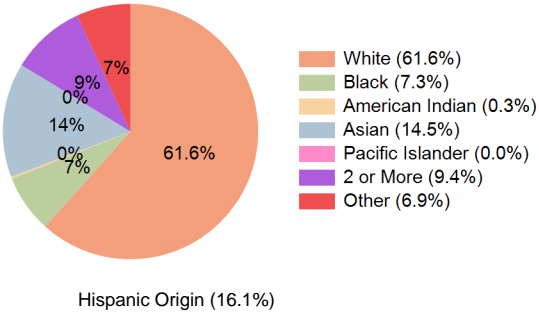
Education (10 Minute Drive)



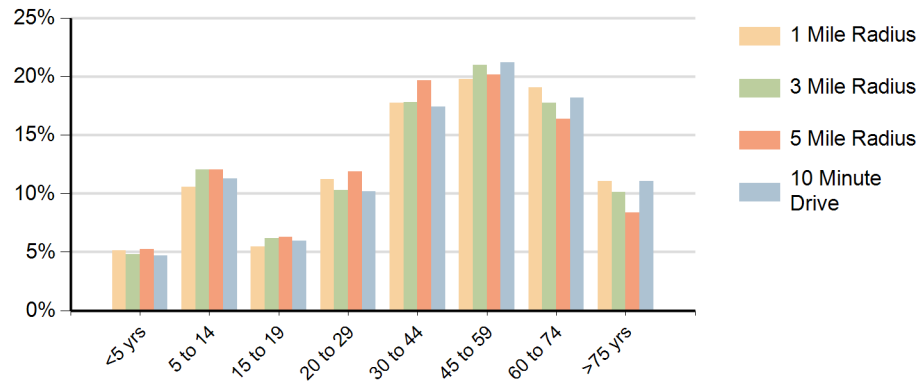
Daytime Population (10 Minute Drive)



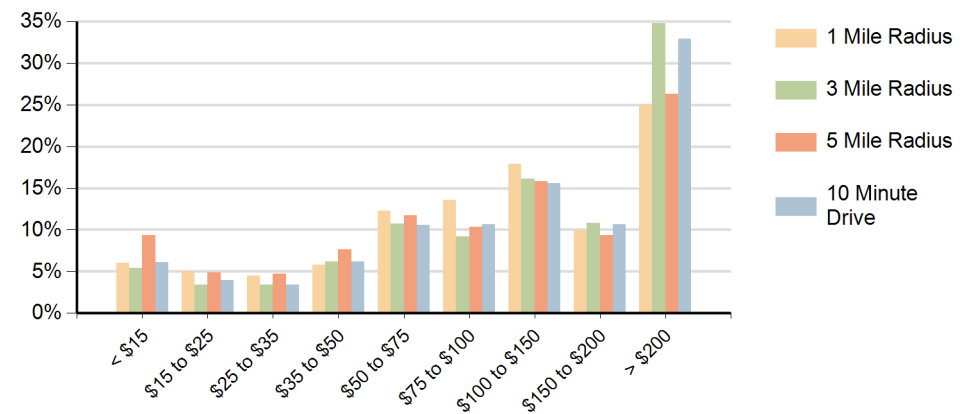
Race (10 Minute Drive)



Population by Age Range



Households by Income Range (\$000)



Tanglewood Shopping Center Yonkers, New York		1 Mile Radius	3 Mile Radius	5 Mile Radius	10 Minute Drive
Population	Current Estimated Population	17,883	141,844	454,320	76,455
	2020 Census Population	17,515	143,518	454,150	77,110
	2010 Census Population	15,994	133,438	422,581	72,407
	Historical Annual Growth 2010 to 2020	0.9%	0.7%	0.7%	0.6%
	Estimated Annual Growth 2020 to 2024	0.5%	-0.3%	0.0%	-0.2%
	Projected Annual Growth 2024 to 2029	0.2%	-0.1%	0.2%	0.0%
Households	Current Estimated Households	6,343	53,247	168,535	30,423
	2020 Census Households	6,290	53,956	169,027	30,773
	2010 Census Households	5,832	51,552	158,981	29,888
	Historical Annual Growth 2010 to 2020	0.8%	0.5%	0.6%	0.3%
	Estimated Annual Growth 2020 to 2024	0.2%	-0.3%	-0.1%	-0.3%
	Projected Annual Growth 2024 to 2029	0.1%	-0.2%	0.1%	-0.2%
Race	Population per Household	2.8	2.6	2.7	2.5
	White	52.4%	62.2%	44.5%	61.6%
	Black or African American	12.1%	7.3%	20.2%	7.3%
	American Indian	0.4%	0.3%	0.8%	0.3%
	Asian	15.0%	12.0%	7.8%	14.5%
	Pacific Islander	0.0%	0.0%	0.0%	0.0%
	2 or More Races	10.0%	10.0%	11.1%	9.4%
	Other Races	10.0%	8.1%	15.5%	6.9%
Hispanic Origin		22.3%	18.0%	27.9%	16.1%