

Bloomfield Crossing
Bloomfield, New Jersey

1 Mile Radius

3 Mile Radius

5 Mile Radius

10 Minute Drive

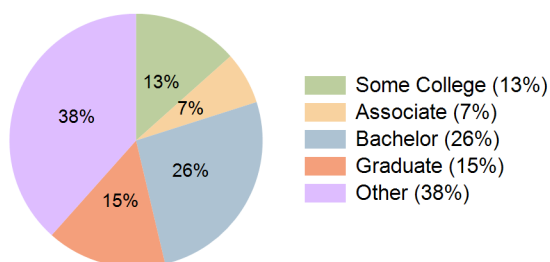
Current Year Demographics

Current Population	32,976	344,608	750,741	211,130
Total Daytime Pop	26,164	261,690	694,343	161,935
Daytime Workers	10,976	92,350	310,160	60,349
Average Household Income	\$123,668	\$128,931	\$124,647	\$134,127
Median Household Income	\$92,815	\$88,392	\$83,518	\$93,507
Total Households	13,326	132,680	284,911	82,419
Median Home Value	\$448,797	\$505,222	\$536,414	\$497,669
Bachelors Degree	27.6%	24.0%	23.5%	26.2%
Graduate Degree	13.6%	13.8%	14.5%	15.3%
Consumer Spending Index	106	111	107	115

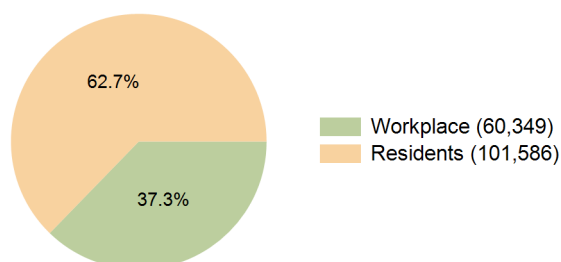
2030 Demographic Projections

Projected Population	32,839	345,671	764,679	211,340
Projected 5 Year Annual Growth Rate (Pop)	-0.1%	0.1%	0.4%	0.0%
Projected Households	13,347	134,100	293,118	83,084
Projected 5 Year Annual Growth Rate (HH)	0.0%	0.2%	0.6%	0.2%

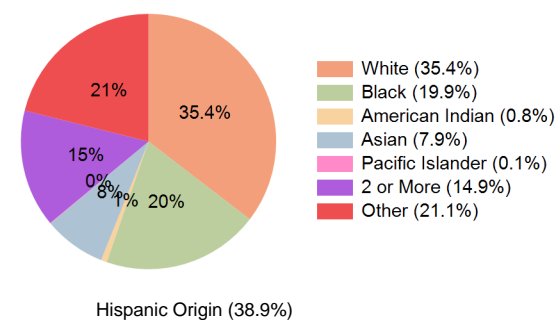
Education (10 Minute Drive)



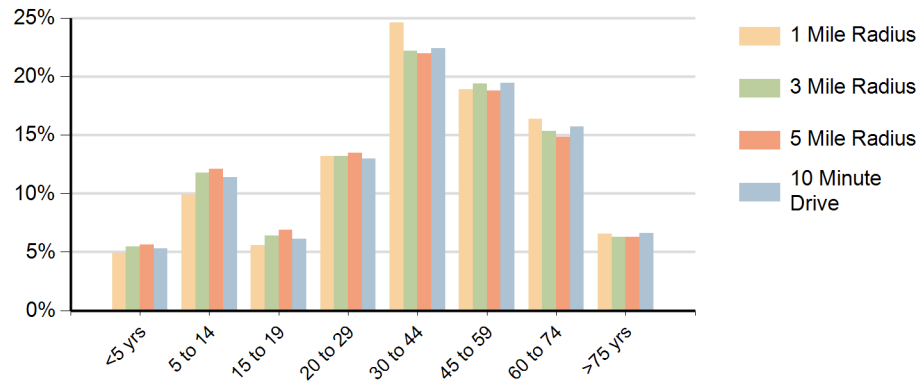
Daytime Population (10 Minute Drive)



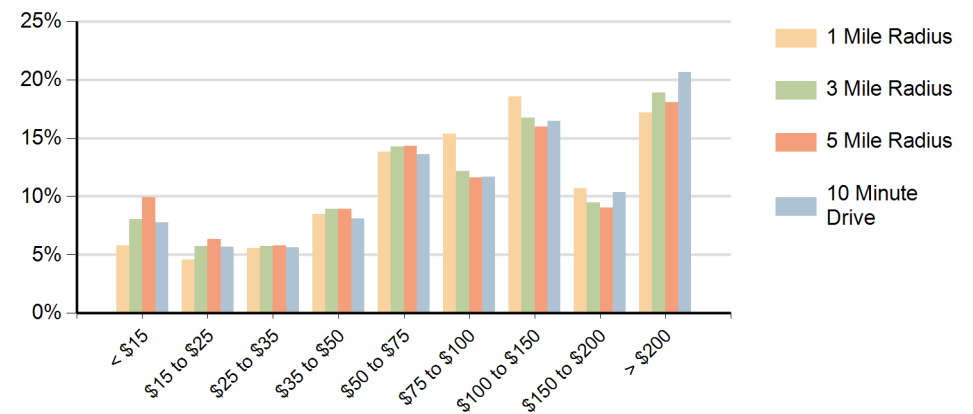
Race (10 Minute Drive)



Population by Age Range



Households by Income Range (\$000)



Bloomfield Crossing Bloomfield, New Jersey		1 Mile Radius	3 Mile Radius	5 Mile Radius	10 Minute Drive
Population	Current Estimated Population	32,976	344,608	750,741	211,130
	2020 Census Population	32,781	344,885	742,492	209,872
	2010 Census Population	28,972	321,008	675,897	195,031
	Historical Annual Growth 2010 to 2020	1.2%	0.7%	0.9%	0.7%
	Estimated Annual Growth 2020 to 2025	0.1%	0.0%	0.2%	0.1%
	Projected Annual Growth 2025 to 2030	-0.1%	0.1%	0.4%	0.0%
Households	Current Estimated Households	13,326	132,680	284,911	82,419
	2020 Census Households	13,076	130,261	277,024	80,458
	2010 Census Households	11,483	119,747	249,550	74,311
	Historical Annual Growth 2010 to 2020	1.3%	0.9%	1.1%	0.8%
	Estimated Annual Growth 2020 to 2025	0.4%	0.4%	0.5%	0.5%
	Projected Annual Growth 2025 to 2030	0.0%	0.2%	0.6%	0.2%
Race	Population per Household	2.5	2.6	2.6	2.6
	White	37.4%	33.0%	31.5%	35.4%
	Black or African American	17.0%	23.2%	29.4%	19.9%
	American Indian	0.9%	0.8%	0.8%	0.8%
	Asian	12.1%	6.2%	6.6%	7.9%
	Pacific Islander	0.1%	0.1%	0.1%	0.1%
	2 or More Races	14.5%	14.7%	13.0%	14.9%
	Other Races	18.1%	22.0%	18.7%	21.1%
Hispanic Origin		36.9%	39.2%	32.8%	38.9%