

**Boonton ACME Shopping Center**  
Boonton, New Jersey

**1 Mile Radius**

**3 Mile Radius**

**5 Mile Radius**

**10 Minute Drive**

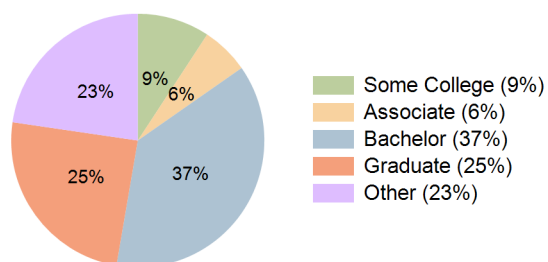
**Current Year Demographics**

Current Population	10,154	51,496	105,507	71,680
Total Daytime Pop	8,631	44,910	119,940	75,622
Daytime Workers	4,160	20,861	70,615	42,305
Average Household Income	\$158,786	\$180,639	\$185,301	\$177,112
Median Household Income	\$117,790	\$132,701	\$141,774	\$130,328
Total Households	4,031	19,549	39,329	27,122
Median Home Value	\$578,195	\$654,821	\$635,640	\$636,600
Bachelors Degree	36.9%	38.3%	37.4%	37.4%
Graduate Degree	20.3%	24.8%	24.6%	24.6%
Consumer Spending Index	133	151	155	148

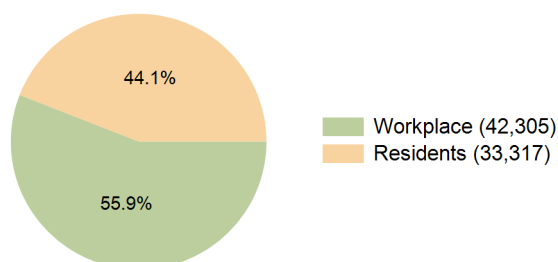
**2030 Demographic Projections**

Projected Population	10,350	51,187	108,659	73,455
Projected 5 Year Annual Growth Rate (Pop)	0.4%	-0.1%	0.6%	0.5%
Projected Households	4,152	19,647	40,956	28,127
Projected 5 Year Annual Growth Rate (HH)	0.6%	0.1%	0.8%	0.7%

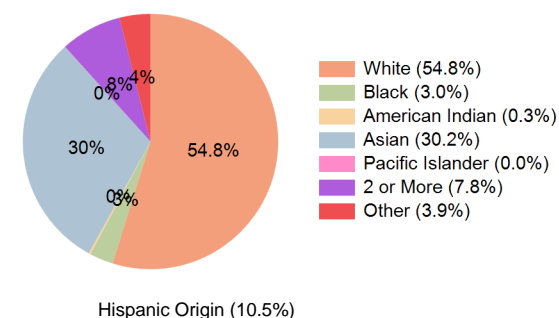
**Education (10 Minute Drive)**



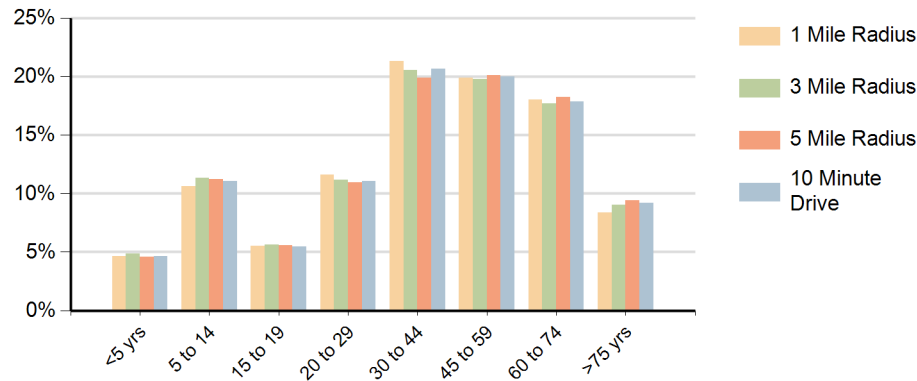
**Daytime Population (10 Minute Drive)**



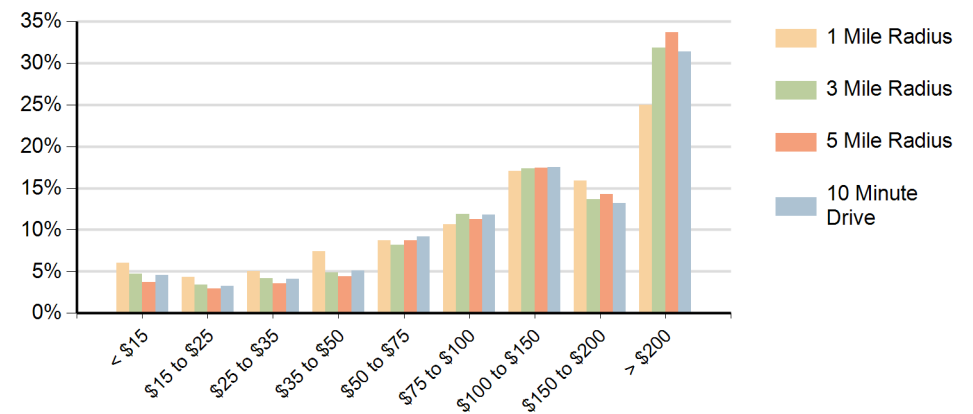
**Race (10 Minute Drive)**



### Population by Age Range



### Households by Income Range (\$000)



Boonton ACME Shopping Center Boonton, New Jersey		1 Mile Radius	3 Mile Radius	5 Mile Radius	10 Minute Drive
Population	Current Estimated Population	10,154	51,496	105,507	71,680
	2020 Census Population	9,460	50,563	103,954	70,249
	2010 Census Population	8,946	47,489	99,810	66,813
	Historical Annual Growth 2010 to 2020	0.6%	0.6%	0.4%	0.5%
	Estimated Annual Growth 2020 to 2025	1.4%	0.4%	0.3%	0.4%
	Projected Annual Growth 2025 to 2030	0.4%	-0.1%	0.6%	0.5%
Households	Current Estimated Households	4,031	19,549	39,329	27,122
	2020 Census Households	3,677	18,872	38,118	26,111
	2010 Census Households	3,484	17,918	36,948	24,984
	Historical Annual Growth 2010 to 2020	0.5%	0.5%	0.3%	0.4%
	Estimated Annual Growth 2020 to 2025	1.8%	0.7%	0.6%	0.7%
	Projected Annual Growth 2025 to 2030	0.6%	0.1%	0.8%	0.7%
Race	Population per Household	2.5	2.6	2.7	2.6
	White	64.1%	58.0%	59.8%	54.8%
	Black or African American	4.7%	3.1%	2.8%	3.0%
	American Indian	0.2%	0.2%	0.2%	0.3%
	Asian	14.7%	26.6%	25.8%	30.2%
	Pacific Islander	0.0%	0.0%	0.0%	0.0%
	2 or More Races	9.8%	8.0%	7.9%	7.8%
	Other Races	6.5%	4.0%	3.6%	3.9%
Hispanic Origin		15.5%	10.8%	10.2%	10.5%