

Washington Commons
Dumont, New Jersey

1 Mile Radius

3 Mile Radius

5 Mile Radius

10 Minute Drive

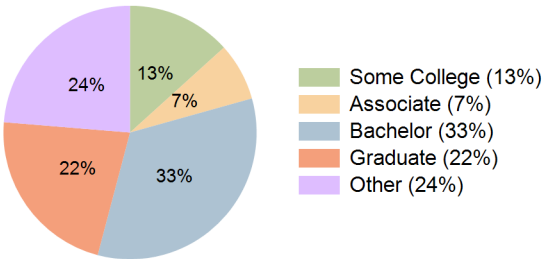
Current Year Demographics

Current Population	29,492	151,433	346,135	120,518
Total Daytime Pop	19,128	124,917	352,695	87,757
Daytime Workers	6,004	52,146	187,366	30,510
Average Household Income	\$142,132	\$184,225	\$171,035	\$181,597
Median Household Income	\$115,233	\$135,501	\$121,903	\$135,320
Total Households	10,374	51,648	124,138	41,225
Median Home Value	\$494,364	\$619,438	\$619,853	\$607,674
Bachelors Degree	32.3%	33.2%	30.8%	33.5%
Graduate Degree	15.3%	22.5%	23.0%	22.2%
Consumer Spending Index	122	158	148	156

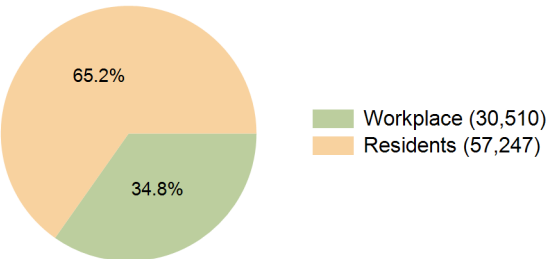
2029 Demographic Projections

Projected Population	28,979	150,008	352,774	119,265
Projected 5 Year Annual Growth Rate (Pop)	-0.4%	-0.2%	0.4%	-0.2%
Projected Households	10,353	51,857	128,745	41,349
Projected 5 Year Annual Growth Rate (HH)	0.0%	0.1%	0.7%	0.1%

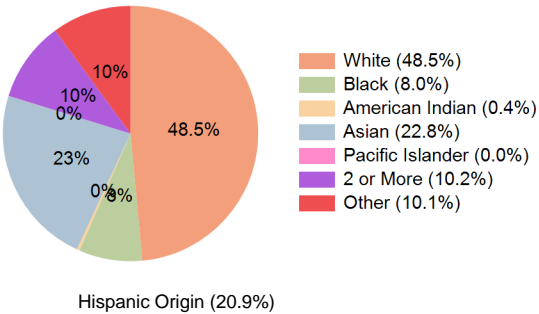
Education (10 Minute Drive)



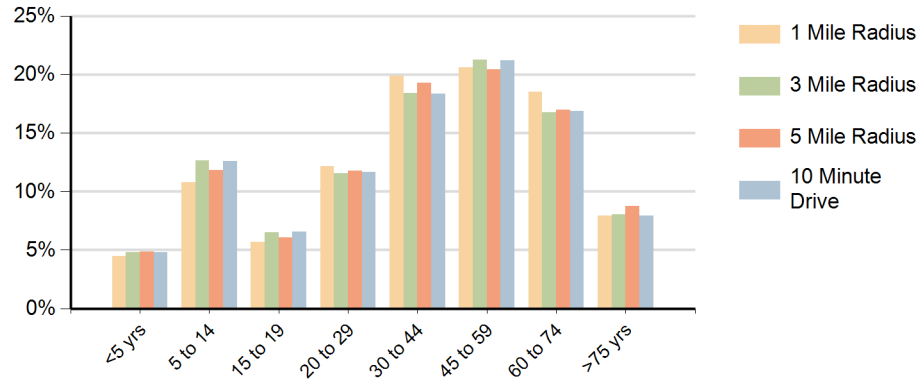
Daytime Population (10 Minute Drive)



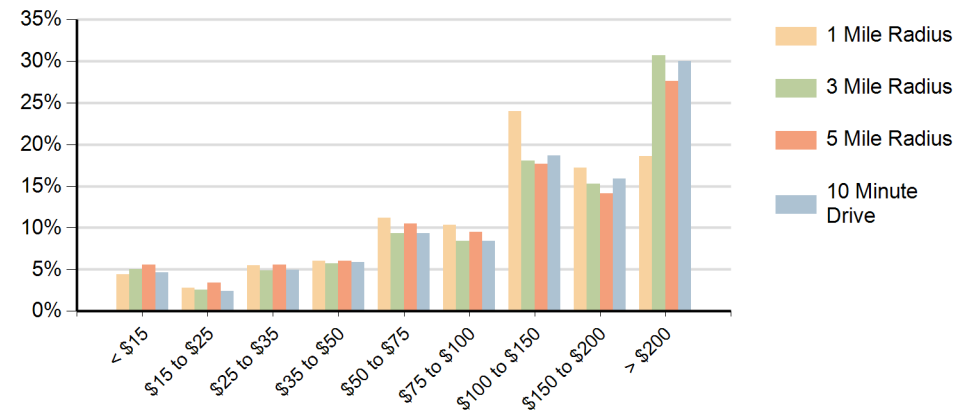
Race (10 Minute Drive)



Population by Age Range



Households by Income Range (\$000)



Washington Commons Dumont, New Jersey		1 Mile Radius	3 Mile Radius	5 Mile Radius	10 Minute Drive
Population	Current Estimated Population	29,492	151,433	346,135	120,518
	2020 Census Population	29,882	150,890	340,175	120,337
	2010 Census Population	28,685	144,684	325,275	115,028
	Historical Annual Growth 2010 to 2020	0.4%	0.4%	0.5%	0.5%
	Estimated Annual Growth 2020 to 2024	-0.3%	0.1%	0.4%	0.0%
	Projected Annual Growth 2024 to 2029	-0.4%	-0.2%	0.4%	-0.2%
Households	Current Estimated Households	10,374	51,648	124,138	41,225
	2020 Census Households	10,315	50,896	120,616	40,723
	2010 Census Households	10,139	49,938	116,602	39,936
	Historical Annual Growth 2010 to 2020	0.2%	0.2%	0.3%	0.2%
	Estimated Annual Growth 2020 to 2024	0.1%	0.4%	0.7%	0.3%
	Projected Annual Growth 2024 to 2029	0.0%	0.1%	0.7%	0.1%
Race	Population per Household	2.8	2.9	2.7	2.9
	White	43.2%	48.3%	46.8%	48.5%
	Black or African American	5.1%	9.2%	11.5%	8.0%
	American Indian	0.4%	0.4%	0.6%	0.4%
	Asian	24.6%	21.8%	18.6%	22.8%
	Pacific Islander	0.0%	0.0%	0.0%	0.0%
	2 or More Races	12.2%	10.2%	10.6%	10.2%
	Other Races	14.6%	10.0%	11.9%	10.1%
Hispanic Origin		29.1%	21.2%	24.0%	20.9%