

### Meadtown Shopping Center Kinnelon, New Jersey

#### 1 Mile Radius

#### 3 Mile Radius

#### 5 Mile Radius

#### 10 Minute Drive

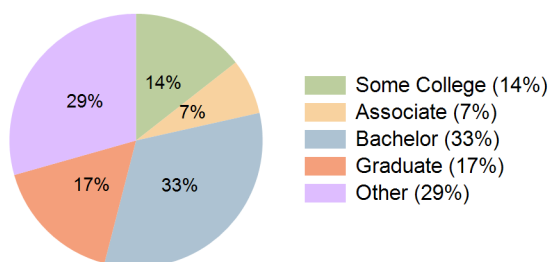
### Current Year Demographics

Current Population	8,593	31,477	71,288	40,602
Total Daytime Pop	8,405	28,551	64,613	37,824
Daytime Workers	4,658	13,387	30,727	19,142
Average Household Income	\$136,718	\$157,375	\$163,821	\$156,507
Median Household Income	\$112,811	\$120,083	\$125,682	\$121,670
Total Households	3,674	13,187	28,050	15,710
Median Home Value	\$456,829	\$542,063	\$536,719	\$526,241
Bachelors Degree	36.0%	32.8%	31.1%	32.5%
Graduate Degree	10.0%	18.2%	18.6%	16.6%
Consumer Spending Index	116	133	138	132

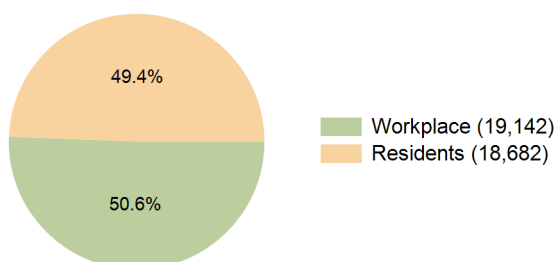
### 2030 Demographic Projections

Projected Population	8,485	30,902	70,612	40,030
Projected 5 Year Annual Growth Rate (Pop)	-0.3%	-0.4%	-0.2%	-0.3%
Projected Households	3,660	13,081	28,063	15,627
Projected 5 Year Annual Growth Rate (HH)	-0.1%	-0.2%	0.0%	-0.1%

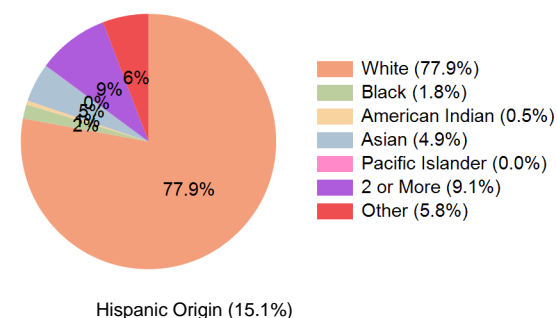
Education (10 Minute Drive)



Daytime Population (10 Minute Drive)

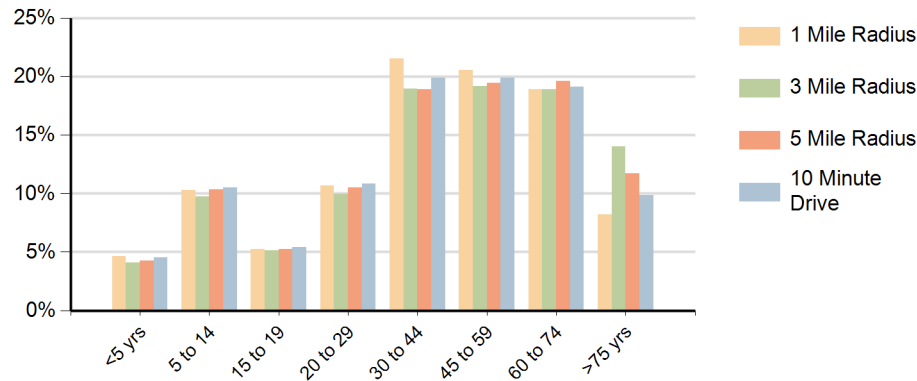


Race (10 Minute Drive)

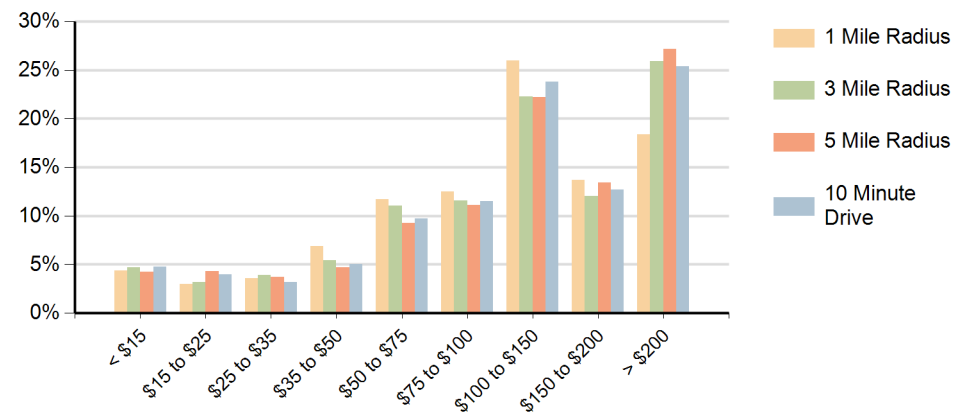


Hispanic Origin (15.1%)

### Population by Age Range



### Households by Income Range (\$000)



Meadtown Shopping Center Kinnelon, New Jersey		1 Mile Radius	3 Mile Radius	5 Mile Radius	10 Minute Drive
Population	Current Estimated Population	8,593	31,477	71,288	40,602
	2020 Census Population	8,553	31,490	71,891	40,902
	2010 Census Population	8,286	30,916	71,441	39,868
	Historical Annual Growth 2010 to 2020	0.3%	0.2%	0.1%	0.3%
	Estimated Annual Growth 2020 to 2025	0.1%	0.0%	-0.2%	-0.1%
	Projected Annual Growth 2025 to 2030	-0.3%	-0.4%	-0.2%	-0.3%
Households	Current Estimated Households	3,674	13,187	28,050	15,710
	2020 Census Households	3,622	13,106	27,887	15,653
	2010 Census Households	3,440	12,631	27,029	15,008
	Historical Annual Growth 2010 to 2020	0.5%	0.4%	0.3%	0.4%
	Estimated Annual Growth 2020 to 2025	0.3%	0.1%	0.1%	0.1%
	Projected Annual Growth 2025 to 2030	-0.1%	-0.2%	0.0%	-0.1%
Race	Population per Household	2.3	2.4	2.5	2.6
	White	77.4%	79.8%	78.5%	77.9%
	Black or African American	1.9%	1.7%	1.7%	1.8%
	American Indian	0.3%	0.4%	0.4%	0.5%
	Asian	4.4%	4.7%	5.3%	4.9%
	Pacific Islander	0.0%	0.0%	0.0%	0.0%
	2 or More Races	9.3%	8.4%	8.8%	9.1%
	Other Races	6.6%	4.9%	5.2%	5.8%
Hispanic Origin		16.4%	13.1%	13.9%	15.1%