

Ferry Street Plaza
Newark, New Jersey

1 Mile Radius

3 Mile Radius

5 Mile Radius

10 Minute Drive

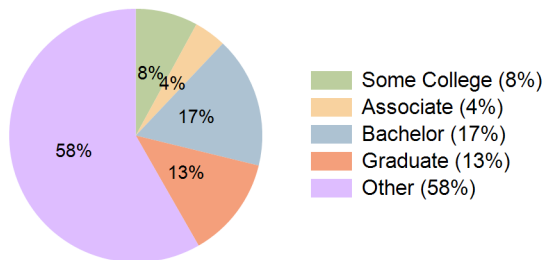
Current Year Demographics

Current Population	50,792	247,642	853,138	74,661
Total Daytime Pop	53,846	294,488	783,887	108,542
Daytime Workers	29,808	163,083	331,190	73,924
Average Household Income	\$86,912	\$78,015	\$89,831	\$91,543
Median Household Income	\$58,981	\$53,920	\$61,641	\$62,155
Total Households	20,045	88,566	317,325	28,728
Median Home Value	\$573,135	\$459,990	\$440,321	\$550,930
Bachelors Degree	14.9%	15.1%	19.3%	16.7%
Graduate Degree	8.5%	9.1%	10.4%	12.9%
Consumer Spending Index	79	70	80	82

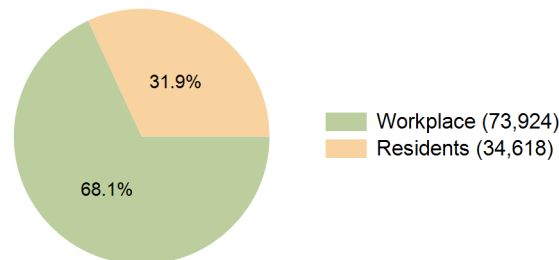
2029 Demographic Projections

Projected Population	52,001	254,429	875,682	78,544
Projected 5 Year Annual Growth Rate (Pop)	0.5%	0.5%	0.5%	1.0%
Projected Households	20,886	93,610	333,116	31,272
Projected 5 Year Annual Growth Rate (HH)	0.8%	1.1%	1.0%	1.7%

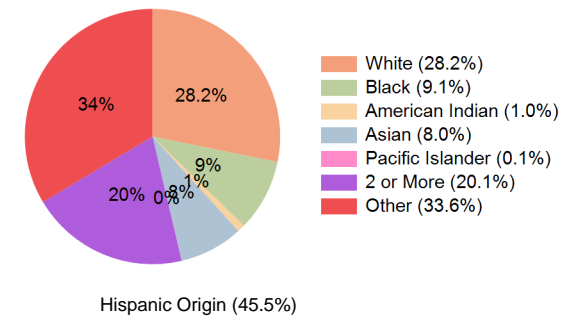
Education (10 Minute Drive)



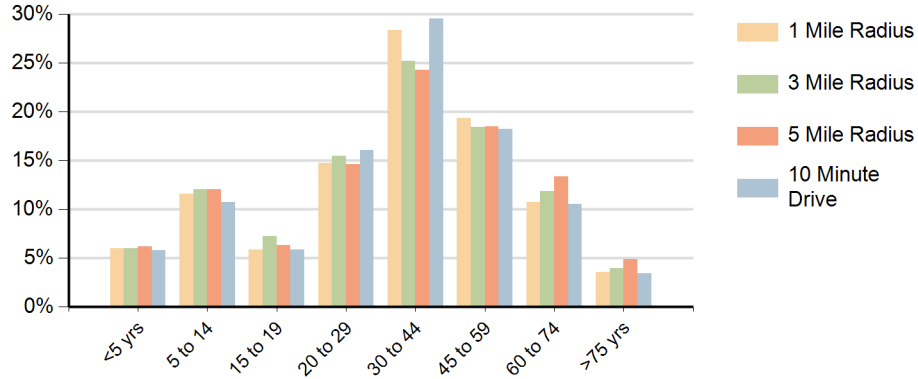
Daytime Population (10 Minute Drive)



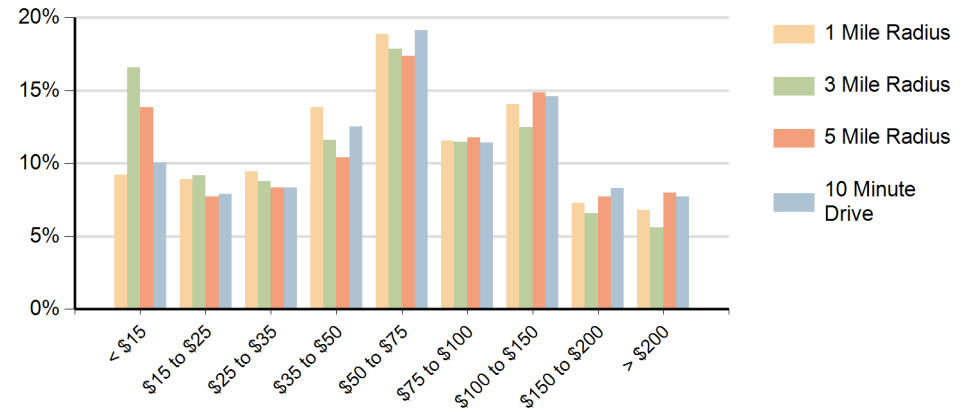
Race (10 Minute Drive)



Population by Age Range



Households by Income Range (\$000)



Ferry Street Plaza Newark, New Jersey		1 Mile Radius	3 Mile Radius	5 Mile Radius	10 Minute Drive
Population	Current Estimated Population	50,792	247,642	853,138	74,661
	2020 Census Population	48,901	244,754	833,777	72,317
	2010 Census Population	42,906	215,438	744,491	61,053
	Historical Annual Growth 2010 to 2020	1.3%	1.3%	1.1%	1.7%
	Estimated Annual Growth 2020 to 2024	0.9%	0.3%	0.5%	0.8%
	Projected Annual Growth 2024 to 2029	0.5%	0.5%	0.5%	1.0%
Households	Current Estimated Households	20,045	88,566	317,325	28,728
	2020 Census Households	18,785	85,444	305,800	27,055
	2010 Census Households	15,412	71,298	267,231	21,151
	Historical Annual Growth 2010 to 2020	2.0%	1.8%	1.4%	2.5%
	Estimated Annual Growth 2020 to 2024	1.5%	0.9%	0.9%	1.4%
	Projected Annual Growth 2024 to 2029	0.8%	1.1%	1.0%	1.7%
Population per Household		2.5	2.6	2.6	2.5
Race	White	30.0%	19.1%	18.3%	28.2%
	Black or African American	5.1%	32.5%	39.9%	9.1%
	American Indian	1.0%	0.9%	0.8%	1.0%
	Asian	4.2%	4.7%	8.4%	8.0%
	Pacific Islander	0.1%	0.1%	0.1%	0.1%
	2 or More Races	22.6%	14.7%	12.3%	20.1%
	Other Races	37.0%	28.2%	20.2%	33.6%
	Hispanic Origin	47.9%	42.4%	33.4%	45.5%