

Pompton Lakes Towne Square
Pompton Lakes, New Jersey

1 Mile Radius

3 Mile Radius

5 Mile Radius

10 Minute Drive

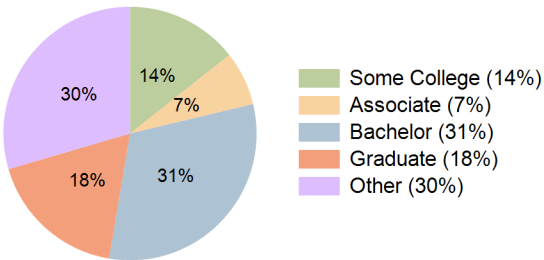
Current Year Demographics

Current Population	7,166	52,557	112,335	52,405
Total Daytime Pop	6,668	51,495	107,521	50,582
Daytime Workers	3,950	27,241	55,053	27,065
Average Household Income	\$130,374	\$156,877	\$180,096	\$167,507
Median Household Income	\$103,404	\$115,233	\$129,482	\$122,532
Total Households	2,842	20,966	42,441	19,664
Median Home Value	\$452,495	\$491,486	\$556,971	\$513,608
Bachelors Degree	32.9%	29.6%	32.7%	31.4%
Graduate Degree	12.8%	18.6%	20.2%	17.8%
Consumer Spending Index	113	136	155	144

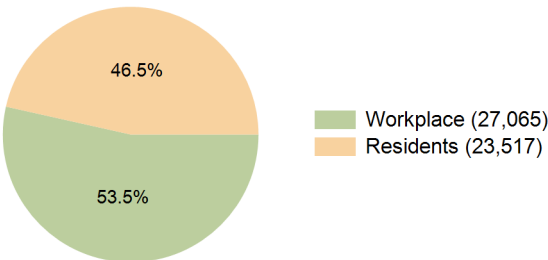
2029 Demographic Projections

Projected Population	7,203	51,634	109,618	51,394
Projected 5 Year Annual Growth Rate (Pop)	0.1%	-0.4%	-0.5%	-0.4%
Projected Households	2,908	21,039	42,295	19,713
Projected 5 Year Annual Growth Rate (HH)	0.5%	0.1%	-0.1%	0.1%

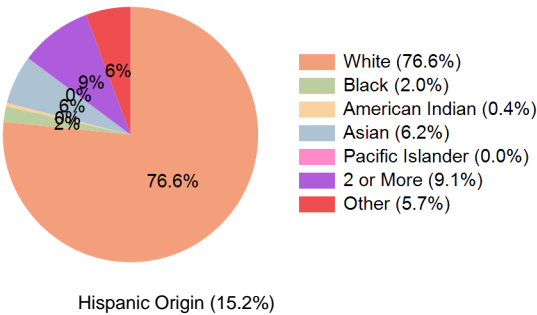
Education (10 Minute Drive)



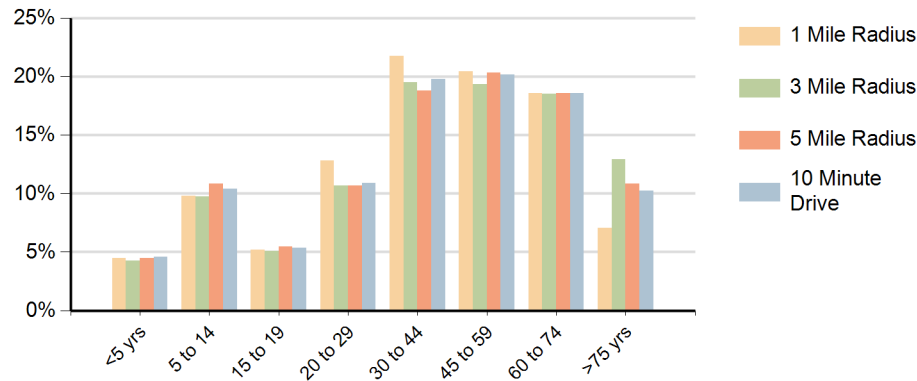
Daytime Population (10 Minute Drive)



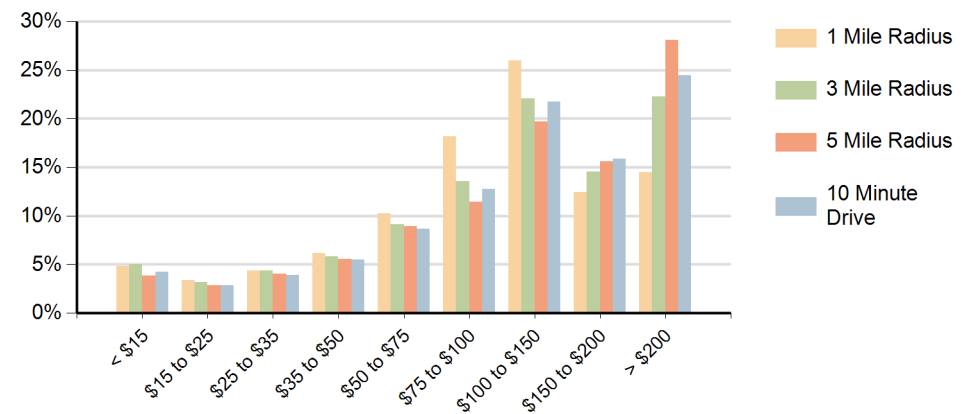
Race (10 Minute Drive)



Population by Age Range



Households by Income Range (\$000)



Pompton Lakes Towne Square Pompton Lakes, New Jersey		1 Mile Radius	3 Mile Radius	5 Mile Radius	10 Minute Drive
Population	Current Estimated Population	7,166	52,557	112,335	52,405
	2020 Census Population	7,279	53,216	113,791	53,173
	2010 Census Population	7,133	52,367	111,901	51,975
	Historical Annual Growth 2010 to 2020	0.2%	0.2%	0.2%	0.2%
	Estimated Annual Growth 2020 to 2024	-0.4%	-0.3%	-0.3%	-0.3%
	Projected Annual Growth 2024 to 2029	0.1%	-0.4%	-0.5%	-0.4%
Households	Current Estimated Households	2,842	20,966	42,441	19,664
	2020 Census Households	2,829	20,940	42,513	19,679
	2010 Census Households	2,737	20,089	41,298	18,743
	Historical Annual Growth 2010 to 2020	0.3%	0.4%	0.3%	0.5%
	Estimated Annual Growth 2020 to 2024	0.1%	0.0%	0.0%	0.0%
	Projected Annual Growth 2024 to 2029	0.5%	0.1%	-0.1%	0.1%
Race	Population per Household	2.5	2.5	2.6	2.6
	White	69.6%	77.2%	78.4%	76.6%
	Black or African American	2.5%	1.9%	1.8%	2.0%
	American Indian	0.8%	0.5%	0.3%	0.4%
	Asian	6.5%	5.6%	6.4%	6.2%
	Pacific Islander	0.0%	0.0%	0.0%	0.0%
	2 or More Races	10.7%	8.9%	8.7%	9.1%
	Other Races	9.9%	5.9%	4.4%	5.7%
Hispanic Origin		21.3%	15.1%	13.0%	15.2%