

Valley Ridge Shopping Center
Wayne, New Jersey

1 Mile Radius

3 Mile Radius

5 Mile Radius

10 Minute Drive

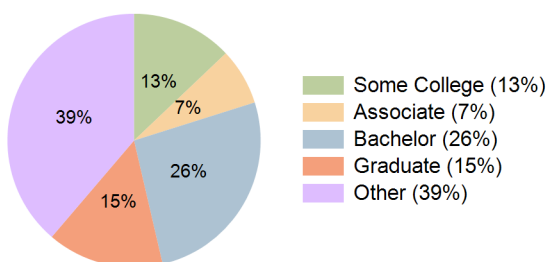
Current Year Demographics

Current Population	9,830	121,760	356,972	89,151
Total Daytime Pop	8,078	124,083	351,603	101,245
Daytime Workers	3,369	60,309	164,712	55,964
Average Household Income	\$180,877	\$129,273	\$130,721	\$144,197
Median Household Income	\$149,806	\$96,828	\$92,157	\$111,729
Total Households	3,537	40,889	121,647	30,564
Median Home Value	\$629,947	\$548,649	\$557,492	\$570,770
Bachelors Degree	32.5%	23.0%	22.4%	26.2%
Graduate Degree	27.2%	12.2%	12.1%	14.9%
Consumer Spending Index	150	110	112	122

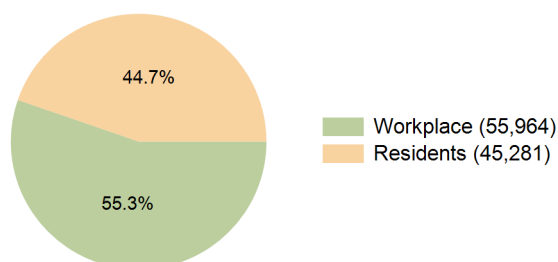
2030 Demographic Projections

Projected Population	9,662	122,838	359,731	90,493
Projected 5 Year Annual Growth Rate (Pop)	-0.3%	0.2%	0.2%	0.3%
Projected Households	3,501	41,625	123,597	31,329
Projected 5 Year Annual Growth Rate (HH)	-0.2%	0.4%	0.3%	0.5%

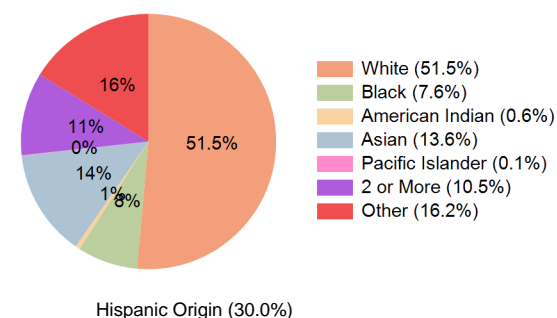
Education (10 Minute Drive)



Daytime Population (10 Minute Drive)

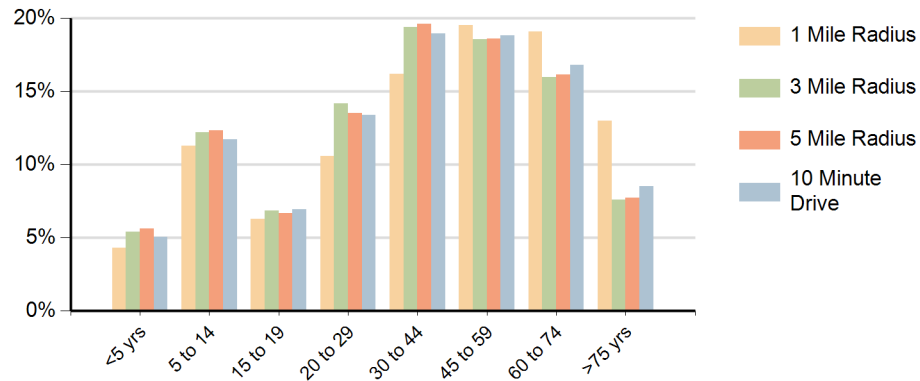


Race (10 Minute Drive)

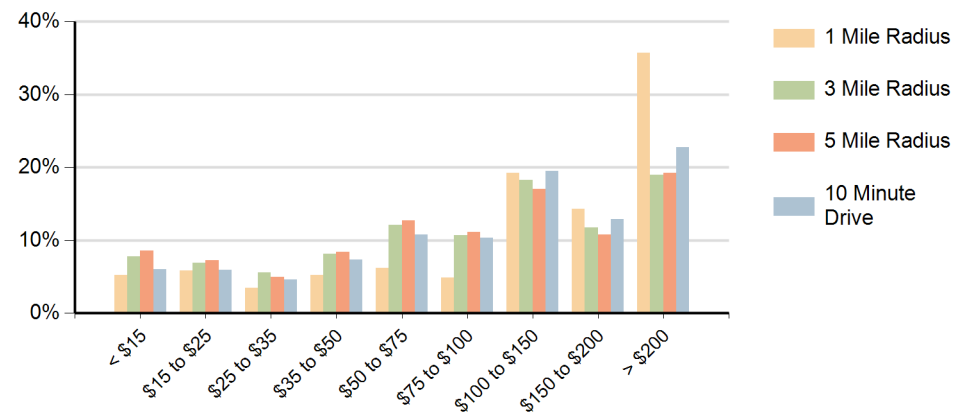


Hispanic Origin (30.0%)

Population by Age Range



Households by Income Range (\$000)



Valley Ridge Shopping Center Wayne, New Jersey		1 Mile Radius	3 Mile Radius	5 Mile Radius	10 Minute Drive
Population	Current Estimated Population	9,830	121,760	356,972	89,151
	2020 Census Population	10,071	123,314	356,758	90,469
	2010 Census Population	9,902	116,737	337,141	87,787
	Historical Annual Growth 2010 to 2020	0.2%	0.6%	0.6%	0.3%
	Estimated Annual Growth 2020 to 2025	-0.5%	-0.2%	0.0%	-0.3%
	Projected Annual Growth 2025 to 2030	-0.3%	0.2%	0.2%	0.3%
Households	Current Estimated Households	3,537	40,889	121,647	30,564
	2020 Census Households	3,575	40,964	120,172	30,641
	2010 Census Households	3,542	38,825	112,628	29,715
	Historical Annual Growth 2010 to 2020	0.1%	0.5%	0.7%	0.3%
	Estimated Annual Growth 2020 to 2025	-0.2%	0.0%	0.2%	-0.1%
	Projected Annual Growth 2025 to 2030	-0.2%	0.4%	0.3%	0.5%
Race	Population per Household	2.8	2.9	2.9	2.8
	White	76.8%	43.9%	43.5%	51.5%
	Black or African American	1.4%	11.1%	12.8%	7.6%
	American Indian	0.2%	0.7%	1.0%	0.6%
	Asian	9.3%	11.3%	6.7%	13.6%
	Pacific Islander	0.1%	0.1%	0.1%	0.1%
	2 or More Races	8.3%	11.5%	12.2%	10.5%
	Other Races	4.0%	21.6%	23.7%	16.2%
Hispanic Origin		12.6%	37.3%	40.4%	30.0%