

**Cedar Hill Shopping Center**  
Wyckoff, New Jersey

**1 Mile Radius**

**3 Mile Radius**

**5 Mile Radius**

**10 Minute Drive**

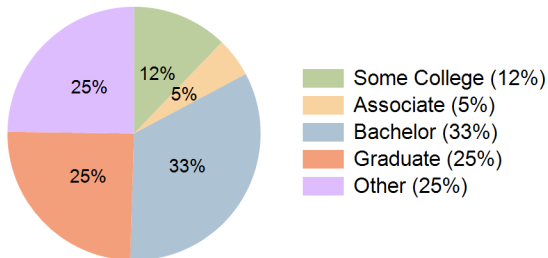
### Current Year Demographics

Current Population	7,974	82,915	312,551	148,989
Total Daytime Pop	7,788	80,691	289,296	142,218
Daytime Workers	3,528	40,258	128,107	69,623
Average Household Income	\$250,489	\$215,369	\$171,164	\$198,838
Median Household Income	\$181,180	\$159,105	\$111,145	\$144,495
Total Households	2,634	29,507	107,200	52,205
Median Home Value	\$829,349	\$708,358	\$642,889	\$660,229
Bachelors Degree	31.8%	35.6%	28.8%	33.3%
Graduate Degree	26.6%	26.3%	19.7%	24.7%
Consumer Spending Index	211	184	149	170

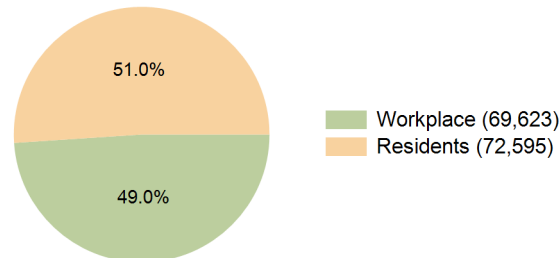
### 2029 Demographic Projections

Projected Population	7,961	81,760	307,630	147,271
Projected 5 Year Annual Growth Rate (Pop)	0.0%	-0.3%	-0.3%	-0.2%
Projected Households	2,670	29,571	107,543	52,463
Projected 5 Year Annual Growth Rate (HH)	0.3%	0.0%	0.1%	0.1%

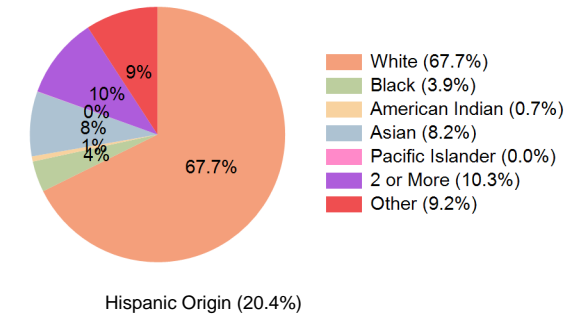
**Education (10 Minute Drive)**



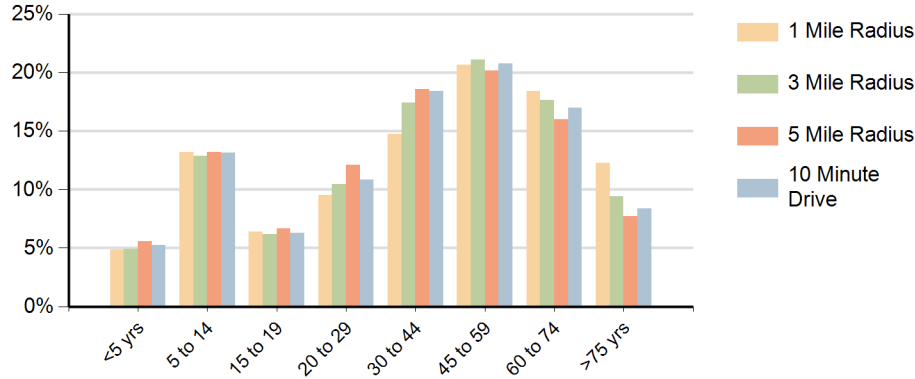
**Daytime Population (10 Minute Drive)**



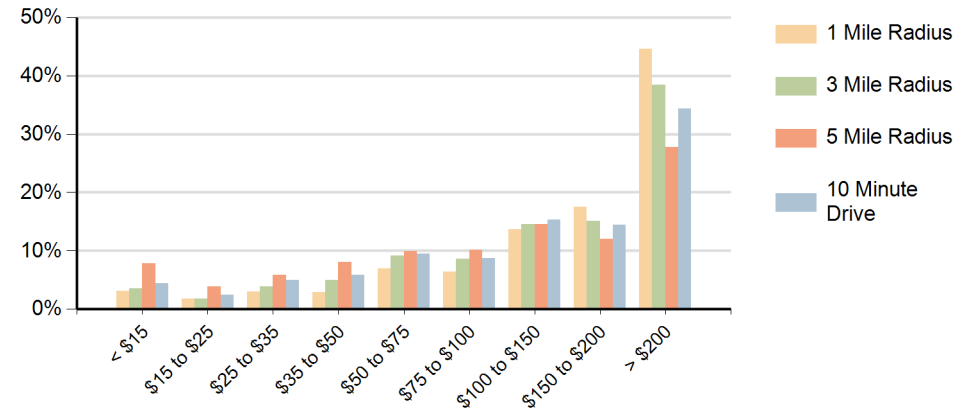
**Race (10 Minute Drive)**



## Population by Age Range



## Households by Income Range (\$000)



Cedar Hill Shopping Center Wyckoff, New Jersey		1 Mile Radius	3 Mile Radius	5 Mile Radius	10 Minute Drive
Population	Current Estimated Population	7,974	82,915	312,551	148,989
	2020 Census Population	7,883	82,252	313,621	148,303
	2010 Census Population	7,886	79,907	295,867	142,782
	Historical Annual Growth 2010 to 2020	0.0%	0.3%	0.6%	0.4%
	Estimated Annual Growth 2020 to 2024	0.3%	0.2%	-0.1%	0.1%
	Projected Annual Growth 2024 to 2029	0.0%	-0.3%	-0.3%	-0.2%
Households	Current Estimated Households	2,634	29,507	107,200	52,205
	2020 Census Households	2,579	29,095	106,441	51,530
	2010 Census Households	2,627	28,792	101,316	50,513
	Historical Annual Growth 2010 to 2020	-0.2%	0.1%	0.5%	0.2%
	Estimated Annual Growth 2020 to 2024	0.5%	0.3%	0.2%	0.3%
	Projected Annual Growth 2024 to 2029	0.3%	0.0%	0.1%	0.1%
Population per Household		2.9	2.8	2.9	2.8
Race	White	81.5%	76.4%	52.6%	67.7%
	Black or African American	1.0%	2.1%	11.0%	3.9%
	American Indian	0.0%	0.2%	0.8%	0.7%
	Asian	5.5%	7.6%	9.2%	8.2%
	Pacific Islander	0.0%	0.0%	0.0%	0.0%
	2 or More Races	10.5%	9.5%	10.4%	10.3%
	Other Races	1.4%	4.2%	16.0%	9.2%
	Hispanic Origin	10.4%	12.9%	28.7%	20.4%