

Putnam Plaza
Carmel, New York

1 Mile Radius

3 Mile Radius

5 Mile Radius

10 Minute Drive

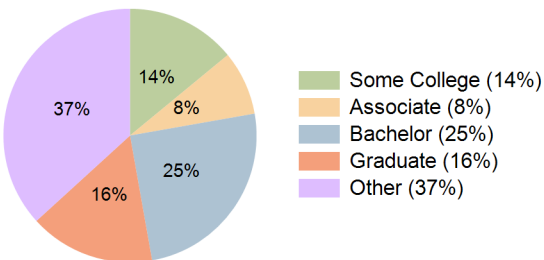
Current Year Demographics

Current Population	2,872	19,569	47,184	21,761
Total Daytime Pop	3,675	19,330	40,744	21,218
Daytime Workers	2,106	9,210	17,286	10,151
Average Household Income	\$105,495	\$135,312	\$146,550	\$133,128
Median Household Income	\$88,399	\$109,649	\$112,562	\$107,137
Total Households	1,196	7,524	17,822	8,334
Median Home Value	\$526,611	\$453,891	\$463,980	\$443,599
Bachelors Degree	18.5%	24.9%	26.7%	25.0%
Graduate Degree	17.3%	16.8%	18.3%	16.0%
Consumer Spending Index	92	117	127	116

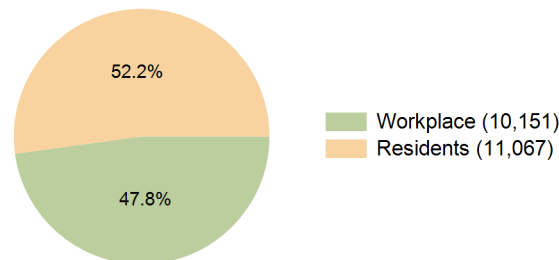
2029 Demographic Projections

Projected Population	2,910	19,517	46,900	21,679
Projected 5 Year Annual Growth Rate (Pop)	0.3%	-0.1%	-0.1%	-0.1%
Projected Households	1,250	7,708	18,163	8,528
Projected 5 Year Annual Growth Rate (HH)	0.9%	0.5%	0.4%	0.5%

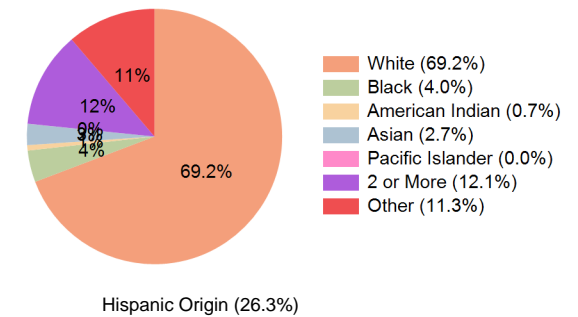
Education (10 Minute Drive)



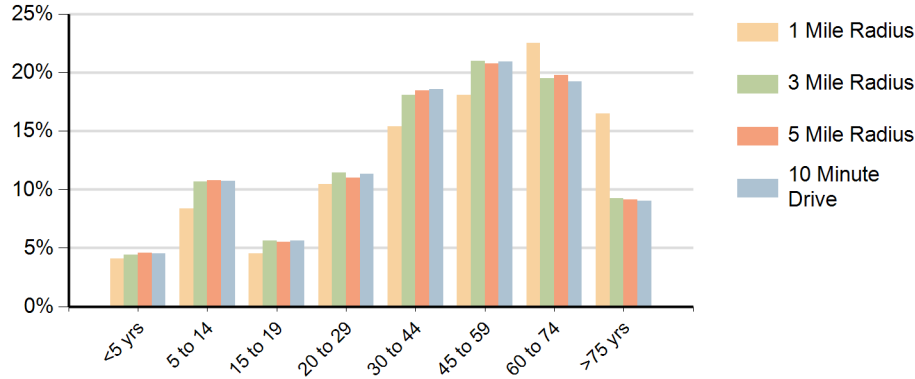
Daytime Population (10 Minute Drive)



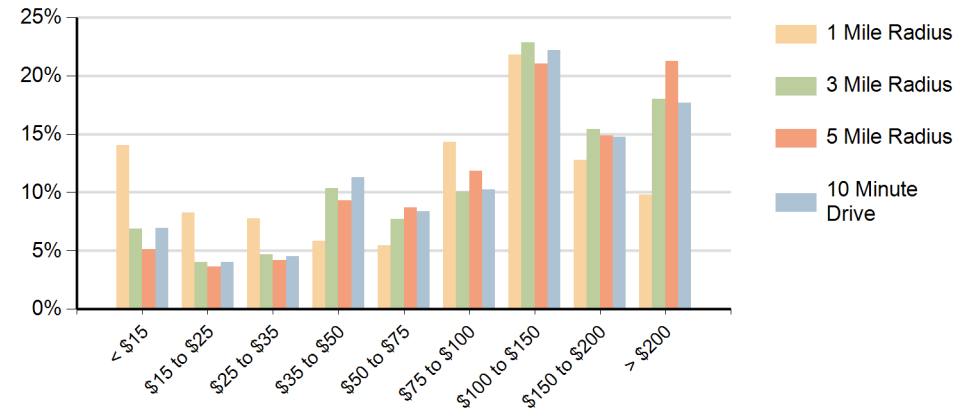
Race (10 Minute Drive)



Population by Age Range



Households by Income Range (\$000)



Putnam Plaza Carmel, New York		1 Mile Radius	3 Mile Radius	5 Mile Radius	10 Minute Drive
Population	Current Estimated Population	2,872	19,569	47,184	21,761
	2020 Census Population	2,826	19,736	47,794	21,887
	2010 Census Population	2,541	19,999	48,686	22,063
	Historical Annual Growth 2010 to 2020	1.1%	-0.1%	-0.2%	-0.1%
	Estimated Annual Growth 2020 to 2024	0.4%	-0.2%	-0.3%	-0.1%
	Projected Annual Growth 2024 to 2029	0.3%	-0.1%	-0.1%	-0.1%
Households	Current Estimated Households	1,196	7,524	17,822	8,334
	2020 Census Households	1,162	7,431	17,693	8,241
	2010 Census Households	940	7,167	17,512	7,984
	Historical Annual Growth 2010 to 2020	2.1%	0.4%	0.1%	0.3%
	Estimated Annual Growth 2020 to 2024	0.7%	0.3%	0.2%	0.3%
	Projected Annual Growth 2024 to 2029	0.9%	0.5%	0.4%	0.5%
	Population per Household	2.3	2.6	2.6	2.6
Race	White	72.8%	70.7%	72.3%	69.2%
	Black or African American	6.0%	3.9%	3.5%	4.0%
	American Indian	0.5%	0.6%	0.6%	0.7%
	Asian	2.9%	2.7%	2.5%	2.7%
	Pacific Islander	0.0%	0.0%	0.0%	0.0%
	2 or More Races	10.1%	11.5%	11.3%	12.1%
	Other Races	7.8%	10.5%	9.8%	11.3%
	Hispanic Origin	20.7%	24.7%	23.3%	26.3%