

Jefferson Valley Shopping Center
Jefferson Valley, New York

1 Mile Radius

3 Mile Radius

5 Mile Radius

10 Minute Drive

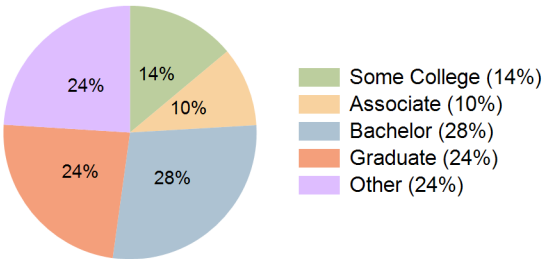
Current Year Demographics

Current Population	4,073	34,815	82,111	45,822
Total Daytime Pop	4,494	26,892	67,159	36,264
Daytime Workers	2,563	9,652	27,961	14,016
Average Household Income	\$161,480	\$192,663	\$183,832	\$185,993
Median Household Income	\$117,366	\$137,904	\$132,662	\$134,790
Total Households	1,612	12,382	28,943	16,084
Median Home Value	\$505,639	\$569,441	\$552,943	\$557,228
Bachelors Degree	29.6%	29.6%	28.1%	28.1%
Graduate Degree	26.7%	24.9%	24.2%	23.8%
Consumer Spending Index	139	165	158	159

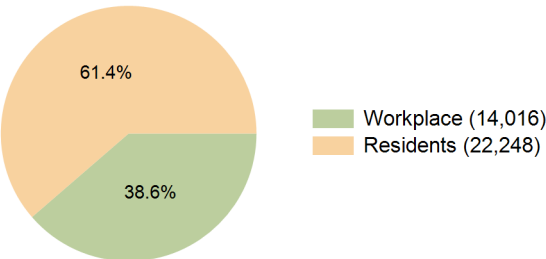
2029 Demographic Projections

Projected Population	4,095	34,699	81,870	45,580
Projected 5 Year Annual Growth Rate (Pop)	0.1%	-0.1%	-0.1%	-0.1%
Projected Households	1,606	12,316	28,926	15,992
Projected 5 Year Annual Growth Rate (HH)	-0.1%	-0.1%	0.0%	-0.1%

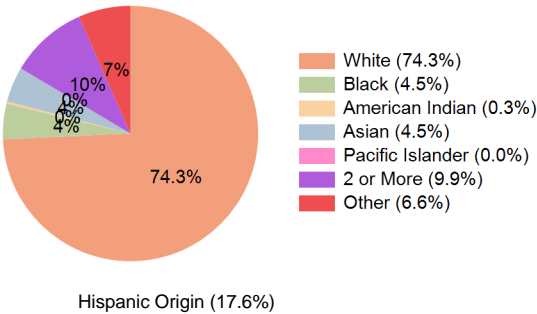
Education (10 Minute Drive)



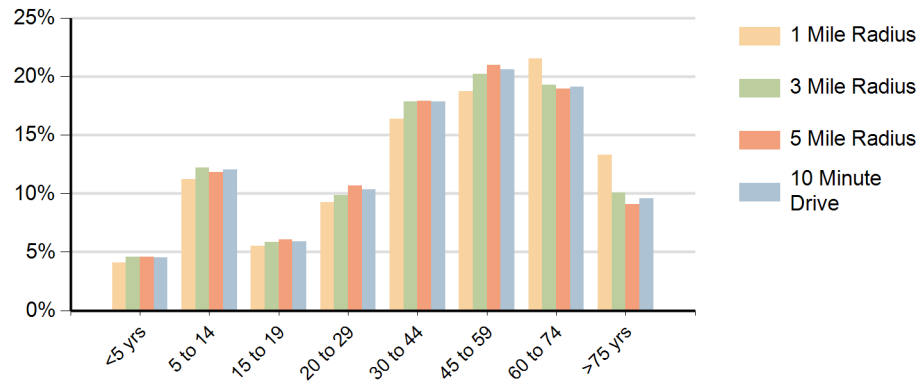
Daytime Population (10 Minute Drive)



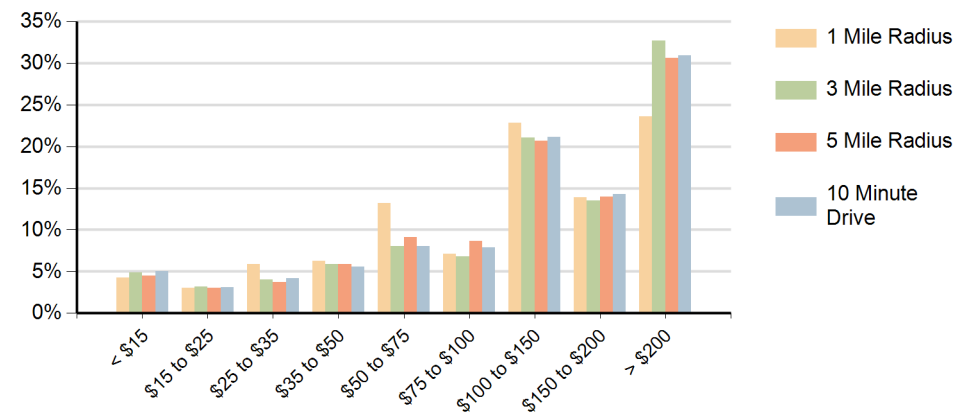
Race (10 Minute Drive)



Population by Age Range



Households by Income Range (\$000)



Jefferson Valley Shopping Center Jefferson Valley, New York		1 Mile Radius	3 Mile Radius	5 Mile Radius	10 Minute Drive
Population	Current Estimated Population	4,073	34,815	82,111	45,822
	2020 Census Population	3,969	34,748	82,183	45,945
	2010 Census Population	3,790	33,886	81,704	45,332
	Historical Annual Growth 2010 to 2020	0.5%	0.3%	0.1%	0.1%
	Estimated Annual Growth 2020 to 2024	0.6%	0.1%	0.0%	-0.1%
	Projected Annual Growth 2024 to 2029	0.1%	-0.1%	-0.1%	-0.1%
Households	Current Estimated Households	1,612	12,382	28,943	16,084
	2020 Census Households	1,614	12,487	29,088	16,236
	2010 Census Households	1,525	11,916	28,384	15,710
	Historical Annual Growth 2010 to 2020	0.6%	0.5%	0.3%	0.3%
	Estimated Annual Growth 2020 to 2024	0.0%	-0.2%	-0.1%	-0.2%
	Projected Annual Growth 2024 to 2029	-0.1%	-0.1%	0.0%	-0.1%
Race	Population per Household	2.5	2.8	2.8	2.8
	White	73.3%	75.2%	73.7%	74.3%
	Black or African American	4.5%	4.1%	4.5%	4.5%
	American Indian	0.4%	0.3%	0.3%	0.3%
	Asian	5.9%	4.6%	4.3%	4.5%
	Pacific Islander	0.0%	0.0%	0.0%	0.0%
	2 or More Races	9.7%	9.6%	10.1%	9.9%
	Other Races	6.1%	6.2%	7.1%	6.6%
Hispanic Origin		17.5%	16.8%	18.1%	17.6%