

High Ridge Center
Stamford, Connecticut

1 Mile Radius

3 Mile Radius

5 Mile Radius

10 Minute Drive

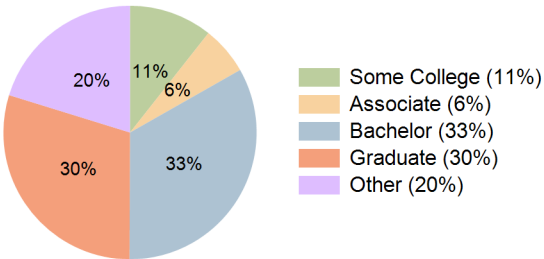
Current Year Demographics

Current Population	6,459	54,907	186,793	37,020
Total Daytime Pop	9,104	54,244	199,654	39,963
Daytime Workers	5,932	28,004	112,656	22,640
Average Household Income	\$215,245	\$215,519	\$187,281	\$198,593
Median Household Income	\$160,467	\$158,269	\$125,140	\$144,017
Total Households	2,381	20,048	71,704	13,810
Median Home Value	\$690,502	\$680,609	\$738,740	\$658,466
Bachelors Degree	28.1%	33.3%	32.7%	33.3%
Graduate Degree	32.7%	30.7%	26.9%	29.7%
Consumer Spending Index	183	184	162	170

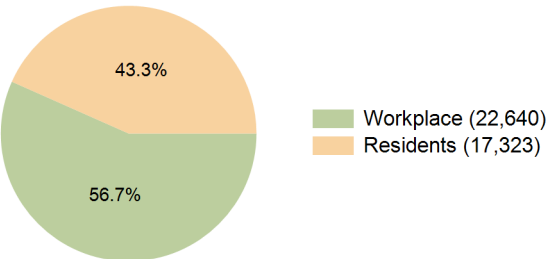
2029 Demographic Projections

Projected Population	6,325	53,850	187,475	36,420
Projected 5 Year Annual Growth Rate (Pop)	-0.4%	-0.4%	0.1%	-0.3%
Projected Households	2,367	19,961	73,726	13,792
Projected 5 Year Annual Growth Rate (HH)	-0.1%	-0.1%	0.6%	0.0%

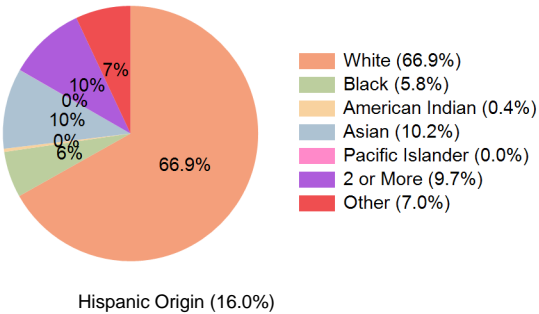
Education (10 Minute Drive)



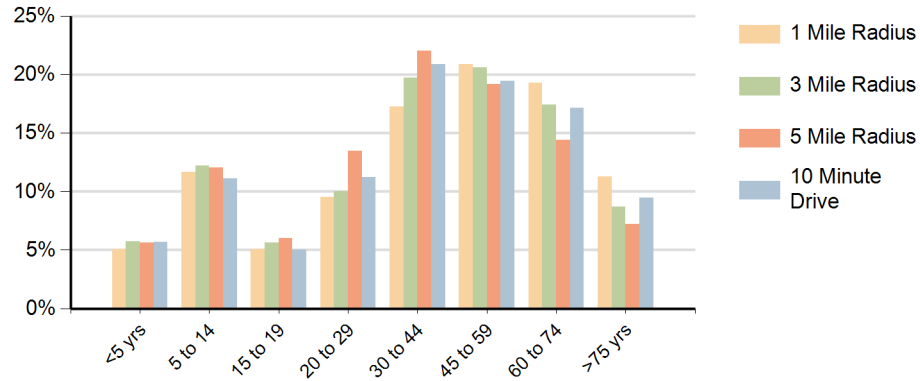
Daytime Population (10 Minute Drive)



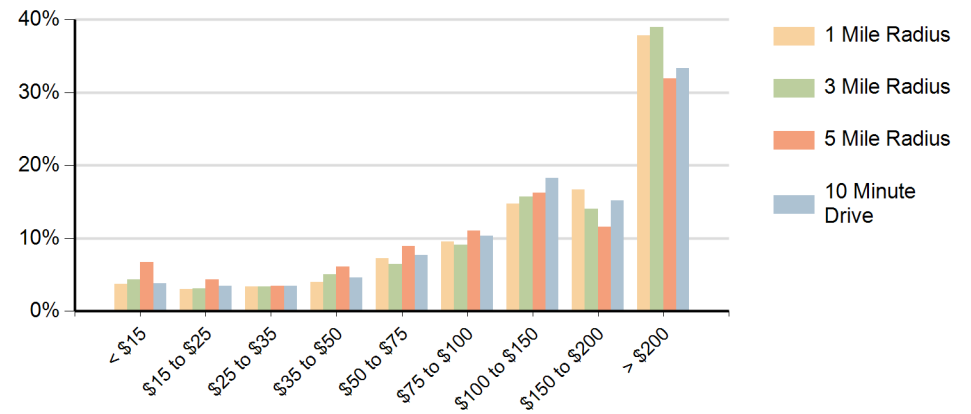
Race (10 Minute Drive)



Population by Age Range



Households by Income Range (\$000)



High Ridge Center Stamford, Connecticut		1 Mile Radius	3 Mile Radius	5 Mile Radius	10 Minute Drive
Population	Current Estimated Population	6,459	54,907	186,793	37,020
	2020 Census Population	6,558	55,436	183,259	37,272
	2010 Census Population	6,719	54,131	168,481	36,279
	Historical Annual Growth 2010 to 2020	-0.2%	0.2%	0.8%	0.3%
	Estimated Annual Growth 2020 to 2024	-0.4%	-0.2%	0.5%	-0.2%
	Projected Annual Growth 2024 to 2029	-0.4%	-0.4%	0.1%	-0.3%
Households	Current Estimated Households	2,381	20,048	71,704	13,810
	2020 Census Households	2,392	20,091	68,994	13,786
	2010 Census Households	2,438	19,826	63,135	13,646
	Historical Annual Growth 2010 to 2020	-0.2%	0.1%	0.9%	0.1%
	Estimated Annual Growth 2020 to 2024	-0.1%	-0.1%	0.9%	0.0%
	Projected Annual Growth 2024 to 2029	-0.1%	-0.1%	0.6%	0.0%
Race	Population per Household	2.7	2.7	2.6	2.6
	White	72.2%	69.5%	58.1%	66.9%
	Black or African American	4.2%	5.1%	9.2%	5.8%
	American Indian	0.3%	0.4%	0.7%	0.4%
	Asian	9.1%	7.9%	8.7%	10.2%
	Pacific Islander	0.0%	0.0%	0.0%	0.0%
	2 or More Races	9.4%	9.9%	11.4%	9.7%
	Other Races	4.9%	7.1%	11.9%	7.0%
Hispanic Origin		13.2%	16.0%	23.5%	16.0%