

McLean Plaza
Yonkers, New York

1 Mile Radius

3 Mile Radius

5 Mile Radius

10 Minute Drive

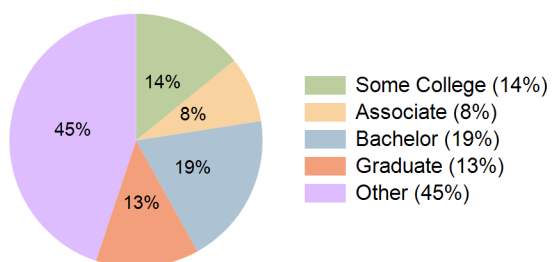
Current Year Demographics

Current Population	31,867	561,749	1,304,276	359,563
Total Daytime Pop	21,828	459,978	1,123,100	305,217
Daytime Workers	6,487	153,892	399,260	110,786
Average Household Income	\$119,759	\$94,264	\$96,805	\$93,426
Median Household Income	\$93,728	\$65,092	\$63,107	\$64,724
Total Households	12,278	213,251	489,969	136,108
Median Home Value	\$620,813	\$582,786	\$605,232	\$572,960
Bachelors Degree	22.0%	19.2%	18.8%	19.4%
Graduate Degree	17.4%	13.8%	13.8%	13.2%
Consumer Spending Index	102	82	84	81

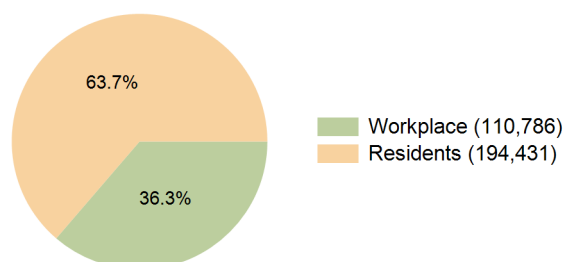
2030 Demographic Projections

Projected Population	31,706	561,848	1,301,739	359,441
Projected 5 Year Annual Growth Rate (Pop)	-0.1%	0.0%	0.0%	0.0%
Projected Households	12,208	215,346	495,144	137,720
Projected 5 Year Annual Growth Rate (HH)	-0.1%	0.2%	0.2%	0.2%

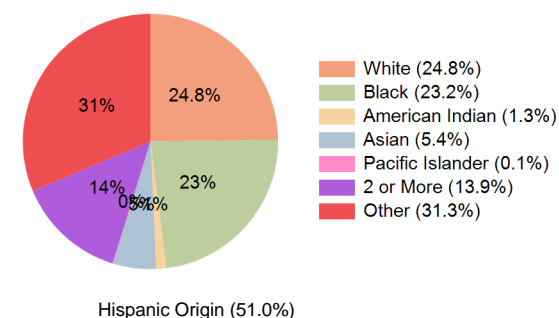
Education (10 Minute Drive)



Daytime Population (10 Minute Drive)

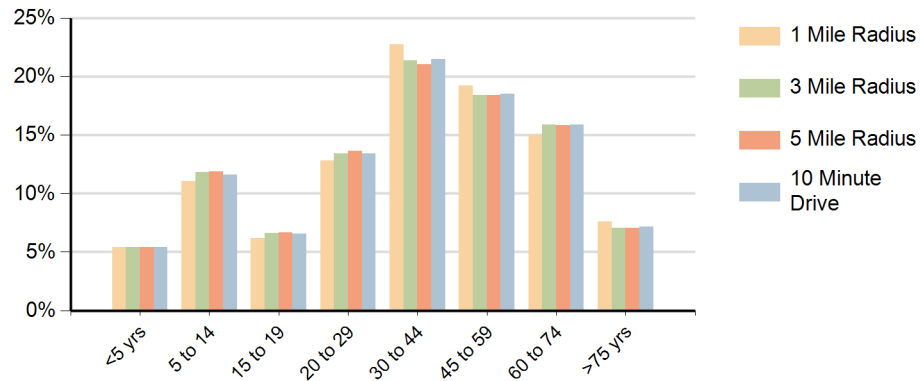


Race (10 Minute Drive)

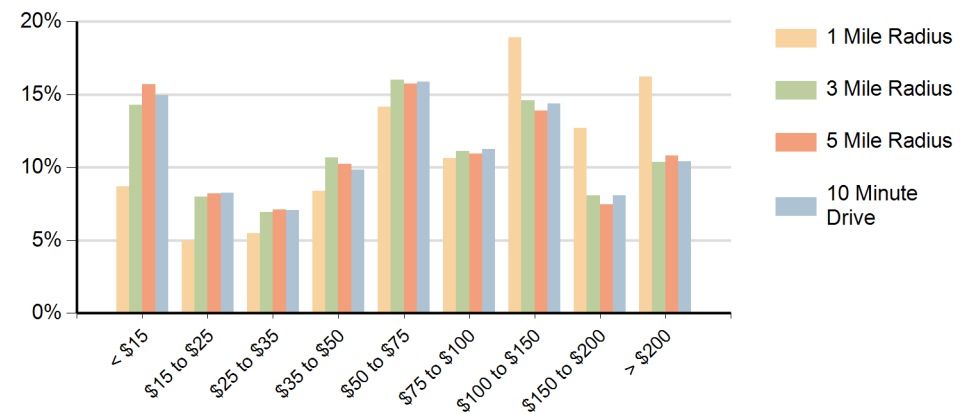


Hispanic Origin (51.0%)

Population by Age Range



Households by Income Range (\$000)



McLean Plaza Yonkers, New York		1 Mile Radius	3 Mile Radius	5 Mile Radius	10 Minute Drive
Population	Current Estimated Population	31,867	561,749	1,304,276	359,563
	2020 Census Population	32,611	569,295	1,323,765	366,032
	2010 Census Population	30,064	532,650	1,255,337	349,065
	Historical Annual Growth 2010 to 2020	0.8%	0.7%	0.5%	0.5%
	Estimated Annual Growth 2020 to 2025	-0.4%	-0.3%	-0.3%	-0.3%
	Projected Annual Growth 2025 to 2030	-0.1%	0.0%	0.0%	0.0%
Households	Current Estimated Households	12,278	213,251	489,969	136,108
	2020 Census Households	12,335	212,657	487,379	135,964
	2010 Census Households	11,966	199,519	459,190	130,019
	Historical Annual Growth 2010 to 2020	0.3%	0.6%	0.6%	0.5%
	Estimated Annual Growth 2020 to 2025	-0.1%	0.1%	0.1%	0.0%
	Projected Annual Growth 2025 to 2030	-0.1%	0.2%	0.2%	0.2%
Race	Population per Household	2.6	2.6	2.6	2.6
	White	50.5%	20.8%	22.0%	24.8%
	Black or African American	10.4%	35.5%	29.4%	23.2%
	American Indian	0.9%	1.2%	1.2%	1.3%
	Asian	6.2%	4.8%	5.4%	5.4%
	Pacific Islander	0.1%	0.1%	0.1%	0.1%
	2 or More Races	11.5%	12.4%	13.0%	13.9%
	Other Races	20.4%	25.3%	29.0%	31.3%
	Hispanic Origin	35.4%	42.1%	47.5%	51.0%