

Orangetown Shopping Center
Orangeburg, New York

1 Mile Radius

3 Mile Radius

5 Mile Radius

10 Minute Drive

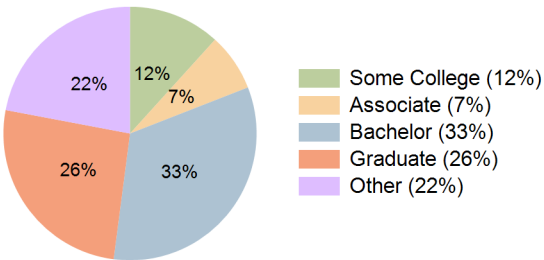
Current Year Demographics

Current Population	7,070	39,943	135,906	42,090
Total Daytime Pop	10,273	43,675	146,348	44,469
Daytime Workers	6,661	24,512	81,343	24,139
Average Household Income	\$198,620	\$209,557	\$205,101	\$204,121
Median Household Income	\$155,748	\$161,078	\$155,122	\$159,675
Total Households	1,960	13,812	49,628	14,341
Median Home Value	\$631,750	\$692,710	\$685,560	\$668,912
Bachelors Degree	32.0%	34.0%	33.1%	33.0%
Graduate Degree	27.1%	28.2%	28.6%	25.9%
Consumer Spending Index	170	178	175	174

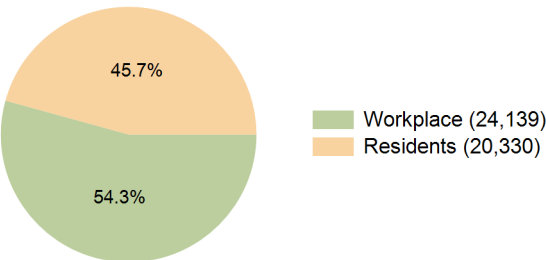
2029 Demographic Projections

Projected Population	7,131	40,453	136,399	42,246
Projected 5 Year Annual Growth Rate (Pop)	0.2%	0.3%	0.1%	0.1%
Projected Households	1,994	14,119	50,271	14,538
Projected 5 Year Annual Growth Rate (HH)	0.3%	0.4%	0.3%	0.3%

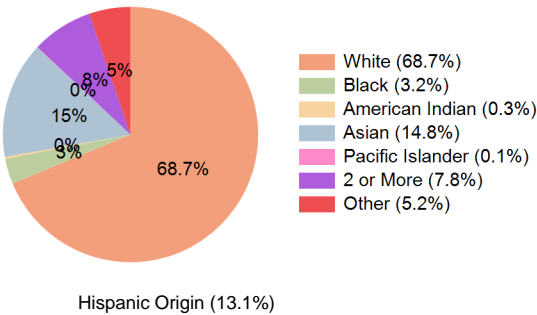
Education (10 Minute Drive)



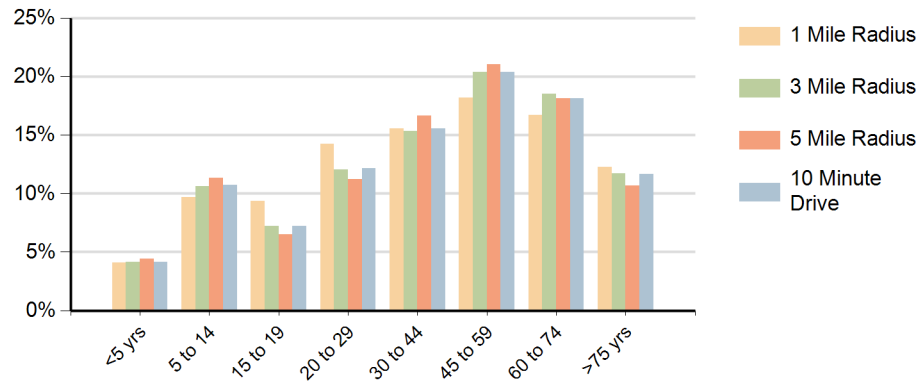
Daytime Population (10 Minute Drive)



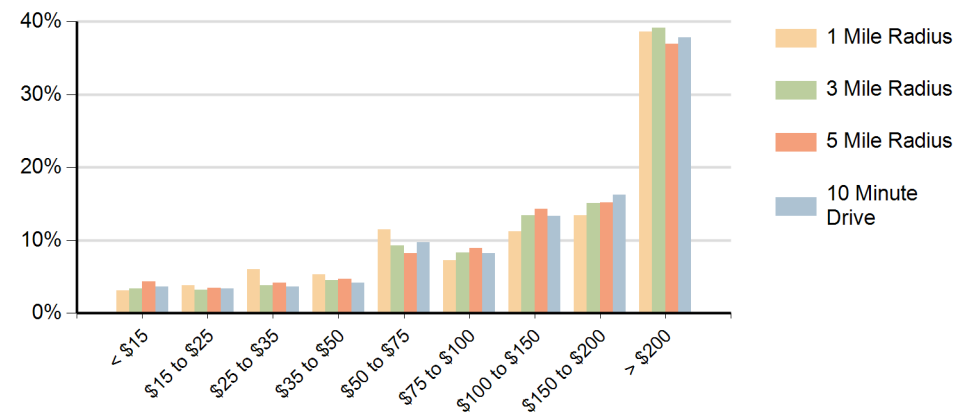
Race (10 Minute Drive)



Population by Age Range



Households by Income Range (\$000)



Orangetown Shopping Center Orangeburg, New York		1 Mile Radius	3 Mile Radius	5 Mile Radius	10 Minute Drive
Population	Current Estimated Population	7,070	39,943	135,906	42,090
	2020 Census Population	7,053	39,860	134,887	42,160
	2010 Census Population	7,103	40,384	133,082	41,962
	Historical Annual Growth 2010 to 2020	-0.1%	-0.1%	0.1%	0.1%
	Estimated Annual Growth 2020 to 2024	0.1%	0.1%	0.2%	0.0%
	Projected Annual Growth 2024 to 2029	0.2%	0.3%	0.1%	0.1%
Households	Current Estimated Households	1,960	13,812	49,628	14,341
	2020 Census Households	1,922	13,615	48,846	14,204
	2010 Census Households	2,054	13,472	47,951	13,981
	Historical Annual Growth 2010 to 2020	-0.7%	0.1%	0.2%	0.2%
	Estimated Annual Growth 2020 to 2024	0.5%	0.3%	0.4%	0.2%
	Projected Annual Growth 2024 to 2029	0.3%	0.4%	0.3%	0.3%
Race	Population per Household	3.2	2.7	2.7	2.8
	White	63.5%	68.5%	68.6%	68.7%
	Black or African American	5.2%	3.2%	4.6%	3.2%
	American Indian	0.4%	0.2%	0.3%	0.3%
	Asian	14.9%	15.3%	13.2%	14.8%
	Pacific Islander	0.1%	0.1%	0.0%	0.1%
	2 or More Races	8.5%	7.7%	8.3%	7.8%
	Other Races	7.5%	5.0%	5.0%	5.2%
Hispanic Origin		17.2%	12.6%	13.0%	13.1%