

Midway Shopping Center  
Scarsdale, New York

1 Mile Radius

3 Mile Radius

5 Mile Radius

10 Minute Drive

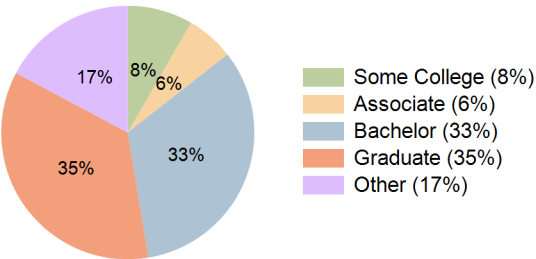
Current Year Demographics

Current Population	15,012	119,682	356,732	74,541
Total Daytime Pop	15,392	105,461	353,519	66,250
Daytime Workers	8,316	48,049	180,858	30,119
Average Household Income	\$224,179	\$218,206	\$185,058	\$214,837
Median Household Income	\$156,689	\$152,685	\$121,897	\$146,770
Total Households	6,063	44,233	135,006	27,978
Median Home Value	\$816,217	\$802,562	\$733,101	\$783,644
Bachelors Degree	33.8%	31.7%	28.1%	33.0%
Graduate Degree	37.9%	36.6%	30.9%	35.4%
Consumer Spending Index	192	187	160	184

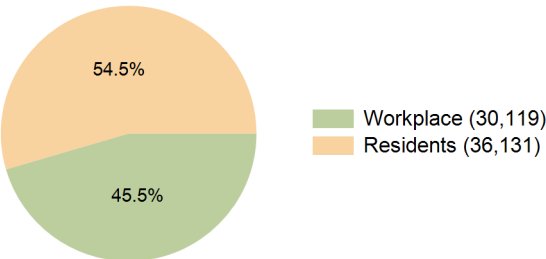
2029 Demographic Projections

Projected Population	14,890	119,216	361,272	74,282
Projected 5 Year Annual Growth Rate (Pop)	-0.2%	-0.1%	0.3%	-0.1%
Projected Households	5,948	43,661	136,104	27,628
Projected 5 Year Annual Growth Rate (HH)	-0.4%	-0.3%	0.2%	-0.3%

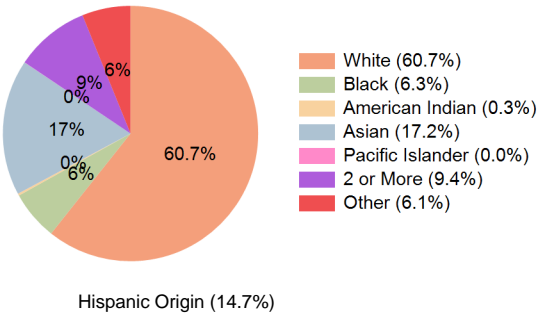
Education (10 Minute Drive)



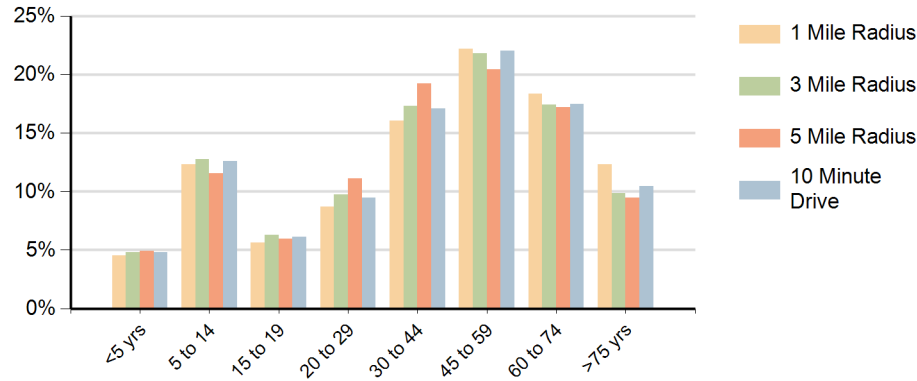
Daytime Population (10 Minute Drive)



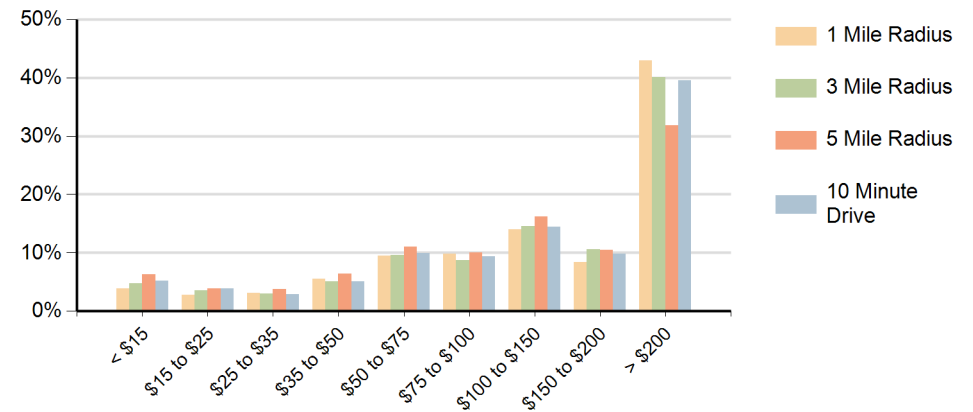
Race (10 Minute Drive)



### Population by Age Range



### Households by Income Range (\$000)



Midway Shopping Center Scarsdale, New York		1 Mile Radius	3 Mile Radius	5 Mile Radius	10 Minute Drive
Population	Current Estimated Population	15,012	119,682	356,732	74,541
	2020 Census Population	15,821	121,072	356,496	75,837
	2010 Census Population	14,340	113,113	333,565	71,182
	Historical Annual Growth 2010 to 2020	1.0%	0.7%	0.7%	0.6%
	Estimated Annual Growth 2020 to 2024	-1.2%	-0.3%	0.0%	-0.4%
	Projected Annual Growth 2024 to 2029	-0.2%	-0.1%	0.3%	-0.1%
Households	Current Estimated Households	6,063	44,233	135,006	27,978
	2020 Census Households	6,208	44,807	135,630	28,372
	2010 Census Households	5,916	43,072	129,186	27,566
	Historical Annual Growth 2010 to 2020	0.5%	0.4%	0.5%	0.3%
	Estimated Annual Growth 2020 to 2024	-0.6%	-0.3%	-0.1%	-0.3%
	Projected Annual Growth 2024 to 2029	-0.4%	-0.3%	0.2%	-0.3%
Race	Population per Household	2.4	2.7	2.6	2.6
	White	60.9%	63.4%	53.9%	60.7%
	Black or African American	4.2%	6.2%	12.8%	6.3%
	American Indian	0.2%	0.3%	0.6%	0.3%
	Asian	21.4%	14.6%	9.6%	17.2%
	Pacific Islander	0.0%	0.0%	0.0%	0.0%
	2 or More Races	8.8%	9.5%	11.1%	9.4%
	Other Races	4.5%	6.1%	11.9%	6.1%
Hispanic Origin		11.7%	14.5%	23.5%	14.7%