

Village at Lee Airpark  
Edgewater, Maryland

1 Mile Radius

3 Mile Radius

5 Mile Radius

10 Minute Drive

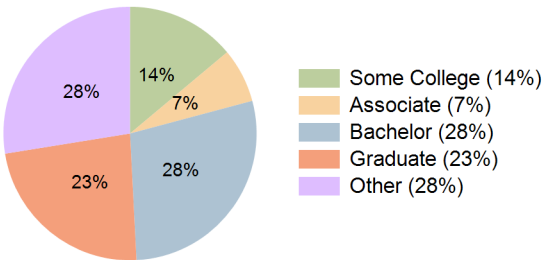
Current Year Demographics

Current Population	6,551	35,002	99,008	26,811
Total Daytime Pop	6,941	54,000	143,734	52,310
Daytime Workers	3,727	36,322	96,562	39,970
Average Household Income	\$139,425	\$175,818	\$169,767	\$155,761
Median Household Income	\$110,036	\$127,975	\$122,553	\$115,665
Total Households	2,554	14,333	41,200	10,983
Median Home Value	\$491,624	\$628,899	\$653,437	\$570,562
Bachelors Degree	27.2%	29.8%	29.0%	28.3%
Graduate Degree	19.4%	25.3%	27.5%	23.3%
Consumer Spending Index	118	149	144	132

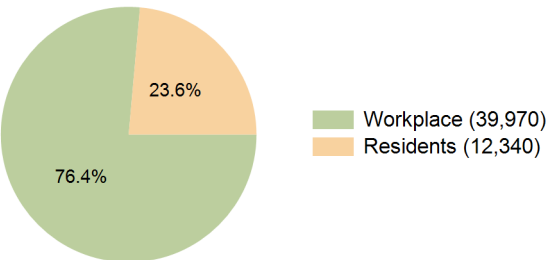
2030 Demographic Projections

Projected Population	6,596	36,438	101,027	27,848
Projected 5 Year Annual Growth Rate (Pop)	0.1%	0.8%	0.4%	0.8%
Projected Households	2,583	15,177	42,394	11,649
Projected 5 Year Annual Growth Rate (HH)	0.2%	1.2%	0.6%	1.2%

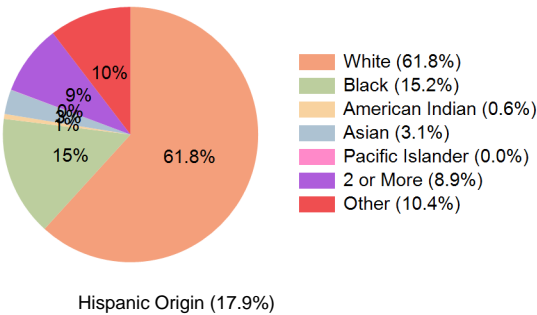
Education (10 Minute Drive)



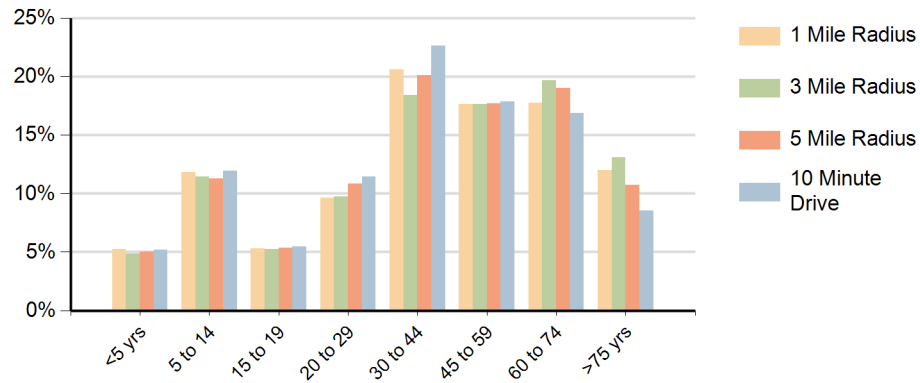
Daytime Population (10 Minute Drive)



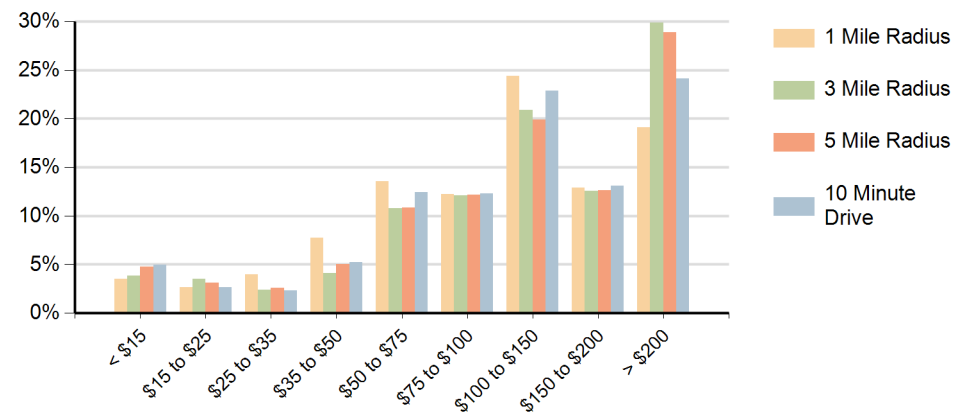
Race (10 Minute Drive)



### Population by Age Range



### Households by Income Range (\$000)



Village at Lee Airpark Edgewater, Maryland		1 Mile Radius	3 Mile Radius	5 Mile Radius	10 Minute Drive
Population	Current Estimated Population	6,551	35,002	99,008	26,811
	2020 Census Population	6,572	34,526	98,127	26,809
	2010 Census Population	6,219	32,163	96,177	24,539
	Historical Annual Growth 2010 to 2020	0.6%	0.7%	0.2%	0.9%
	Estimated Annual Growth 2020 to 2025	-0.1%	0.3%	0.2%	0.0%
	Projected Annual Growth 2025 to 2030	0.1%	0.8%	0.4%	0.8%
Households	Current Estimated Households	2,554	14,333	41,200	10,983
	2020 Census Households	2,541	14,004	40,492	10,801
	2010 Census Households	2,456	12,923	38,253	9,561
	Historical Annual Growth 2010 to 2020	0.3%	0.8%	0.6%	1.2%
	Estimated Annual Growth 2020 to 2025	0.1%	0.4%	0.3%	0.3%
	Projected Annual Growth 2025 to 2030	0.2%	1.2%	0.6%	1.2%
Race	Population per Household	2.5	2.4	2.4	2.4
	White	76.9%	70.2%	67.3%	61.8%
	Black or African American	3.3%	11.4%	12.6%	15.2%
	American Indian	0.5%	0.5%	0.6%	0.6%
	Asian	3.4%	2.7%	2.7%	3.1%
	Pacific Islander	0.0%	0.0%	0.0%	0.0%
	2 or More Races	10.3%	8.1%	8.2%	8.9%
	Other Races	5.6%	7.2%	8.5%	10.4%
Hispanic Origin		12.9%	12.9%	14.9%	17.9%