

1225-1239 Second Ave
New York, New York

1 Mile Radius

3 Mile Radius

5 Mile Radius

10 Minute Drive

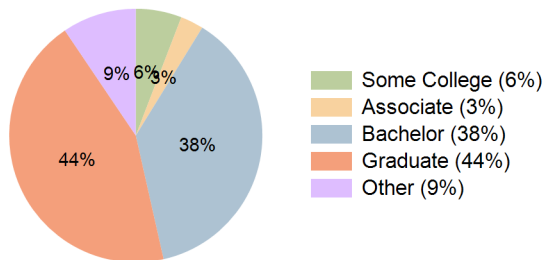
Current Year Demographics

Current Population	193,740	1,353,195	2,995,628	308,846
Total Daytime Pop	545,351	2,538,591	4,425,618	669,633
Daytime Workers	468,010	1,973,086	3,046,976	546,052
Average Household Income	\$210,030	\$174,302	\$150,330	\$205,555
Median Household Income	\$148,410	\$112,754	\$92,919	\$144,054
Total Households	108,389	686,574	1,343,537	171,759
Median Home Value	\$1,302,634	\$1,079,772	\$905,560	\$1,303,827
Bachelors Degree	37.2%	36.3%	31.4%	37.7%
Graduate Degree	44.4%	33.8%	25.0%	44.1%
Consumer Spending Index	182	152	132	178

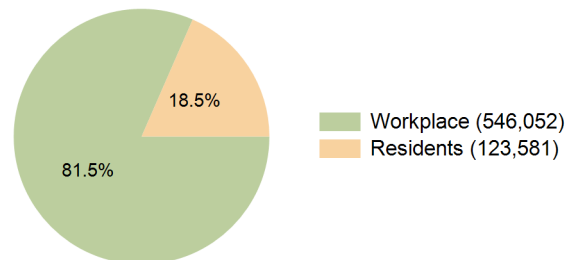
2029 Demographic Projections

Projected Population	188,546	1,348,668	2,997,662	301,769
Projected 5 Year Annual Growth Rate (Pop)	-0.5%	-0.1%	0.0%	-0.5%
Projected Households	107,787	696,596	1,368,523	171,556
Projected 5 Year Annual Growth Rate (HH)	-0.1%	0.3%	0.4%	0.0%

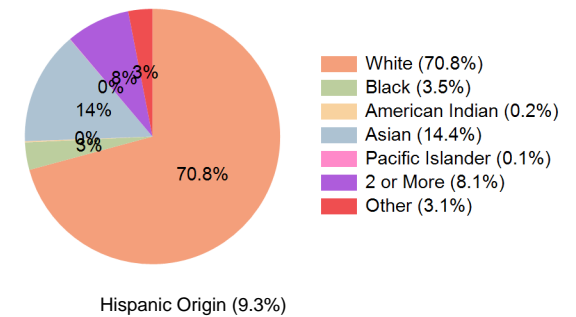
Education (10 Minute Drive)



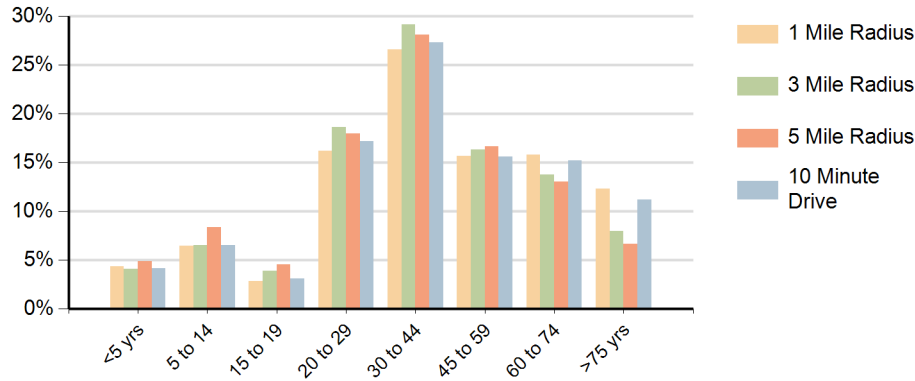
Daytime Population (10 Minute Drive)



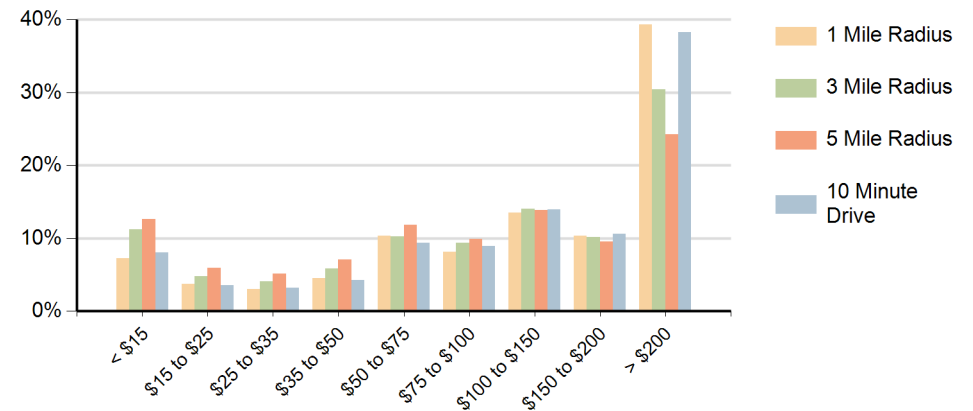
Race (10 Minute Drive)



Population by Age Range



Households by Income Range (\$000)



1225-1239 Second Ave New York, New York		1 Mile Radius	3 Mile Radius	5 Mile Radius	10 Minute Drive
Population	Current Estimated Population	193,740	1,353,195	2,995,628	308,846
	2020 Census Population	200,321	1,391,135	3,054,674	320,214
	2010 Census Population	187,987	1,262,940	2,784,998	291,750
	Historical Annual Growth 2010 to 2020	0.6%	1.0%	0.9%	0.9%
	Estimated Annual Growth 2020 to 2024	-0.8%	-0.7%	-0.5%	-0.9%
	Projected Annual Growth 2024 to 2029	-0.5%	-0.1%	0.0%	-0.5%
Households	Current Estimated Households	108,389	686,574	1,343,537	171,759
	2020 Census Households	110,114	693,365	1,346,846	174,484
	2010 Census Households	106,936	635,176	1,210,130	165,427
	Historical Annual Growth 2010 to 2020	0.3%	0.9%	1.1%	0.5%
	Estimated Annual Growth 2020 to 2024	-0.4%	-0.2%	-0.1%	-0.4%
	Projected Annual Growth 2024 to 2029	-0.1%	0.3%	0.4%	0.0%
Population per Household	1.8	1.9	2.2	1.8	
Race	White	72.0%	55.1%	42.9%	70.8%
	Black or African American	3.3%	9.0%	11.5%	3.5%
	American Indian	0.1%	0.6%	1.0%	0.2%
	Asian	14.3%	15.4%	16.1%	14.4%
	Pacific Islander	0.1%	0.1%	0.1%	0.1%
	2 or More Races	7.8%	10.4%	11.6%	8.1%
	Other Races	2.5%	9.4%	16.9%	3.1%
	Hispanic Origin	8.4%	19.9%	30.8%	9.3%