

90 - 30 Metropolitan Avenue
Rego Park, New York

1 Mile Radius

3 Mile Radius

5 Mile Radius

10 Minute Drive

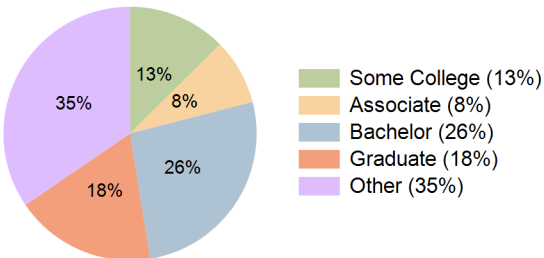
Current Year Demographics

Current Population	54,737	964,836	2,362,536	214,684
Total Daytime Pop	48,070	752,985	1,979,036	179,917
Daytime Workers	20,753	252,074	733,839	72,836
Average Household Income	\$137,235	\$108,676	\$103,806	\$126,910
Median Household Income	\$103,080	\$79,153	\$73,715	\$94,396
Total Households	21,976	328,996	841,778	81,128
Median Home Value	\$896,404	\$787,776	\$789,416	\$827,361
Bachelors Degree	29.8%	21.5%	22.1%	26.5%
Graduate Degree	23.5%	12.1%	12.2%	18.0%
Consumer Spending Index	119	95	91	111

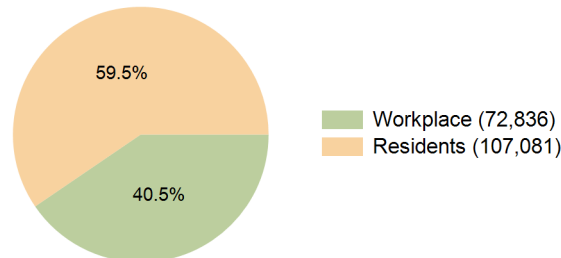
2029 Demographic Projections

Projected Population	54,988	967,079	2,364,152	214,498
Projected 5 Year Annual Growth Rate (Pop)	0.1%	0.1%	0.0%	0.0%
Projected Households	22,073	330,155	846,658	80,883
Projected 5 Year Annual Growth Rate (HH)	0.1%	0.1%	0.1%	-0.1%

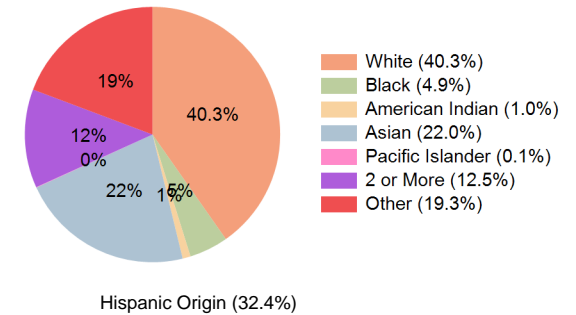
Education (10 Minute Drive)



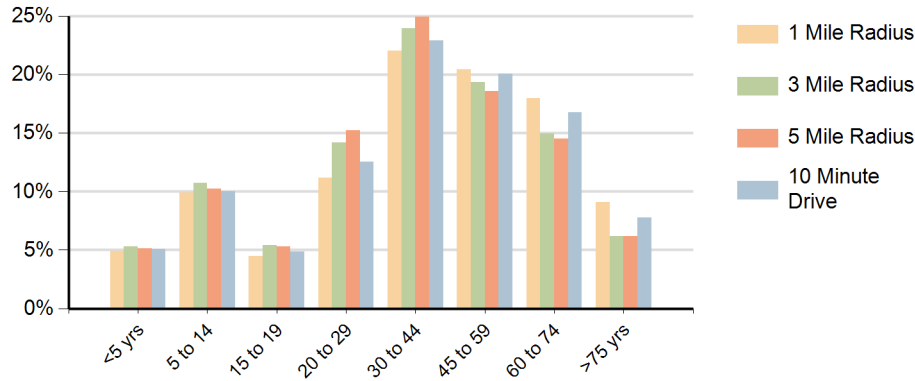
Daytime Population (10 Minute Drive)



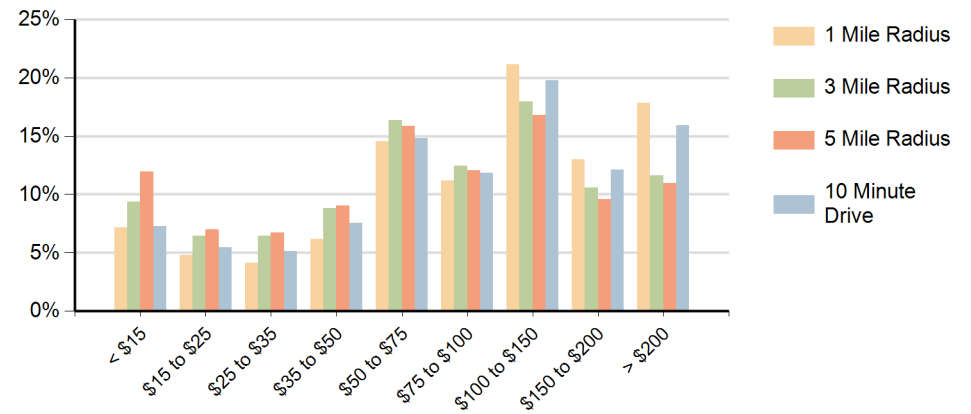
Race (10 Minute Drive)



Population by Age Range



Households by Income Range (\$000)



90 - 30 Metropolitan Avenue Rego Park, New York		1 Mile Radius	3 Mile Radius	5 Mile Radius	10 Minute Drive
Population	Current Estimated Population	54,737	964,836	2,362,536	214,684
	2020 Census Population	55,709	987,093	2,408,326	219,186
	2010 Census Population	51,857	930,572	2,236,428	204,087
	Historical Annual Growth 2010 to 2020	0.7%	0.6%	0.7%	0.7%
	Estimated Annual Growth 2020 to 2024	-0.4%	-0.5%	-0.5%	-0.5%
	Projected Annual Growth 2024 to 2029	0.1%	0.1%	0.0%	0.0%
Households	Current Estimated Households	21,976	328,996	841,778	81,128
	2020 Census Households	22,272	334,717	851,330	82,674
	2010 Census Households	21,707	313,384	777,222	79,758
	Historical Annual Growth 2010 to 2020	0.3%	0.7%	0.9%	0.4%
	Estimated Annual Growth 2020 to 2024	-0.3%	-0.4%	-0.3%	-0.4%
	Projected Annual Growth 2024 to 2029	0.1%	0.1%	0.1%	-0.1%
Population per Household		2.5	2.9	2.8	2.6
Race	White	53.0%	24.4%	22.0%	40.3%
	Black or African American	2.8%	8.5%	20.5%	4.9%
	American Indian	0.4%	1.8%	1.4%	1.0%
	Asian	22.7%	25.8%	23.7%	22.0%
	Pacific Islander	0.0%	0.1%	0.1%	0.1%
	2 or More Races	10.6%	12.0%	11.1%	12.5%
	Other Races	10.5%	27.5%	21.3%	19.3%
	Hispanic Origin	21.4%	39.7%	32.3%	32.4%