

Atlantic Village
Atlantic Beach, Florida

1 Mile Radius

3 Mile Radius

5 Mile Radius

10 Minute Drive

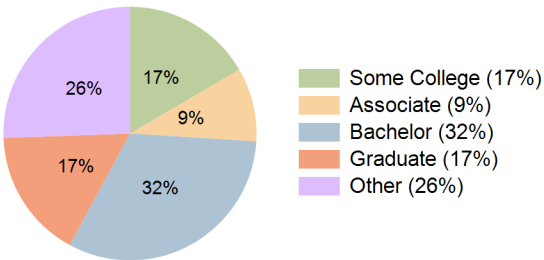
Current Year Demographics

Current Population	11,770	57,225	127,458	65,491
Total Daytime Pop	16,295	53,641	124,363	61,463
Daytime Workers	11,848	30,012	71,202	34,644
Average Household Income	\$135,400	\$133,379	\$137,515	\$127,941
Median Household Income	\$107,327	\$101,019	\$105,032	\$99,477
Total Households	5,186	25,744	53,029	28,867
Median Home Value	\$454,950	\$461,533	\$447,129	\$442,965
Bachelors Degree	36.2%	32.5%	33.3%	31.9%
Graduate Degree	19.1%	17.9%	17.8%	16.5%
Consumer Spending Index	118	117	121	112

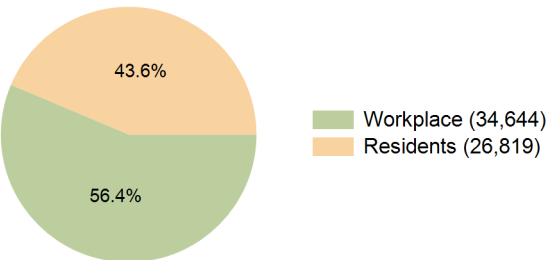
2029 Demographic Projections

Projected Population	11,611	57,379	129,164	65,667
Projected 5 Year Annual Growth Rate (Pop)	-0.3%	0.1%	0.3%	0.1%
Projected Households	5,214	26,338	54,820	29,541
Projected 5 Year Annual Growth Rate (HH)	0.1%	0.5%	0.7%	0.5%

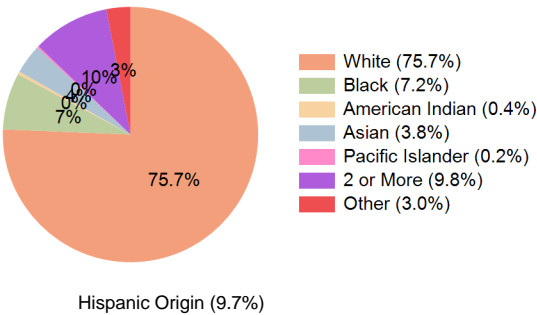
Education (10 Minute Drive)



Daytime Population (10 Minute Drive)

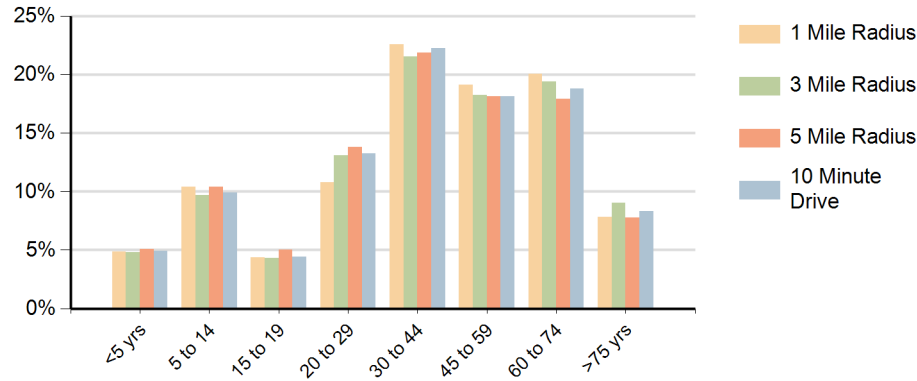


Race (10 Minute Drive)

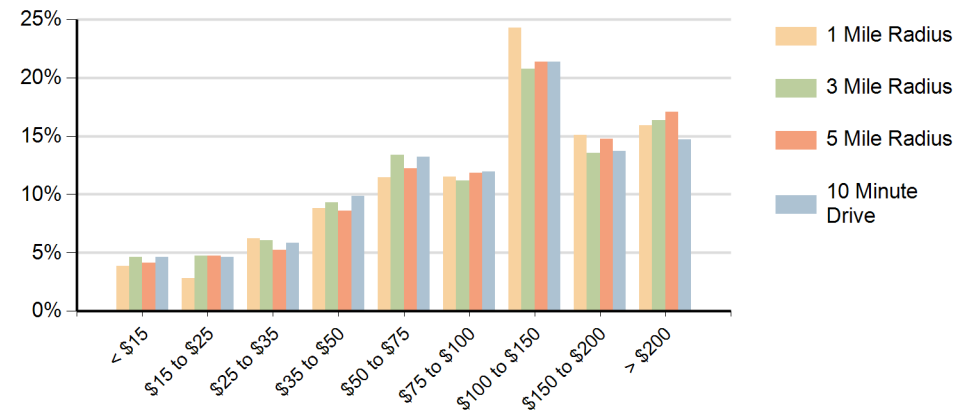


Hispanic Origin (9.7%)

Population by Age Range



Households by Income Range (\$000)



Atlantic Village Atlantic Beach, Florida		1 Mile Radius	3 Mile Radius	5 Mile Radius	10 Minute Drive
Population	Current Estimated Population	11,770	57,225	127,458	65,491
	2020 Census Population	11,982	55,814	124,279	64,175
	2010 Census Population	11,293	53,489	111,138	61,044
	Historical Annual Growth 2010 to 2020	0.6%	0.4%	1.1%	0.5%
	Estimated Annual Growth 2020 to 2024	-0.4%	0.6%	0.6%	0.5%
	Projected Annual Growth 2024 to 2029	-0.3%	0.1%	0.3%	0.1%
Households	Current Estimated Households	5,186	25,744	53,029	28,867
	2020 Census Households	5,169	24,836	51,049	27,913
	2010 Census Households	4,734	22,144	44,167	24,740
	Historical Annual Growth 2010 to 2020	0.9%	1.2%	1.5%	1.2%
	Estimated Annual Growth 2020 to 2024	0.1%	0.9%	0.9%	0.8%
	Projected Annual Growth 2024 to 2029	0.1%	0.5%	0.7%	0.5%
Race	Population per Household	2.3	2.2	2.3	2.3
	White	77.9%	77.7%	72.2%	75.7%
	Black or African American	8.1%	6.4%	8.0%	7.2%
	American Indian	0.4%	0.4%	0.4%	0.4%
	Asian	2.3%	2.8%	5.4%	3.8%
	Pacific Islander	0.1%	0.2%	0.2%	0.2%
	2 or More Races	9.3%	9.6%	10.1%	9.8%
	Other Races	1.9%	3.0%	3.7%	3.0%
Hispanic Origin		7.5%	9.5%	11.1%	9.7%