

Avenida Walk
Aventura, Florida

1 Mile Radius

3 Mile Radius

5 Mile Radius

10 Minute Drive

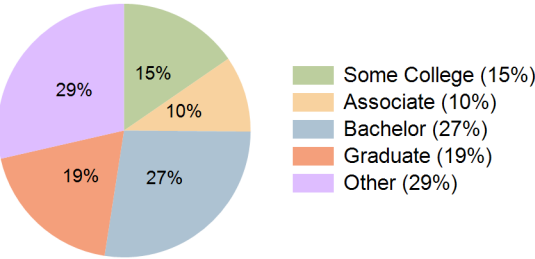
Current Year Demographics

Current Population	27,319	190,399	416,269	117,005
Total Daytime Pop	39,741	196,658	409,465	133,129
Daytime Workers	25,870	100,041	203,828	73,352
Average Household Income	\$132,047	\$111,805	\$101,882	\$119,354
Median Household Income	\$78,676	\$69,265	\$65,928	\$71,435
Total Households	12,272	82,339	170,044	51,782
Median Home Value	\$472,006	\$471,231	\$464,086	\$496,856
Bachelors Degree	32.9%	25.5%	22.5%	27.3%
Graduate Degree	21.9%	17.7%	14.7%	19.0%
Consumer Spending Index	113	97	88	103

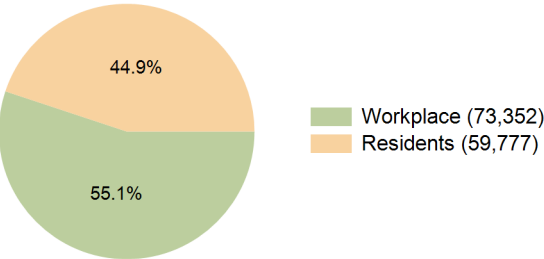
2030 Demographic Projections

Projected Population	31,715	198,978	431,478	123,847
Projected 5 Year Annual Growth Rate (Pop)	3.0%	0.9%	0.7%	1.1%
Projected Households	13,879	86,401	178,073	54,796
Projected 5 Year Annual Growth Rate (HH)	2.5%	1.0%	0.9%	1.1%

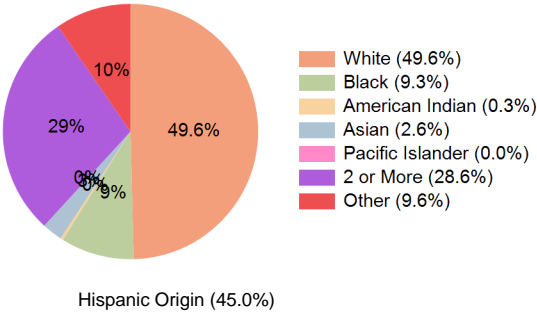
Education (10 Minute Drive)



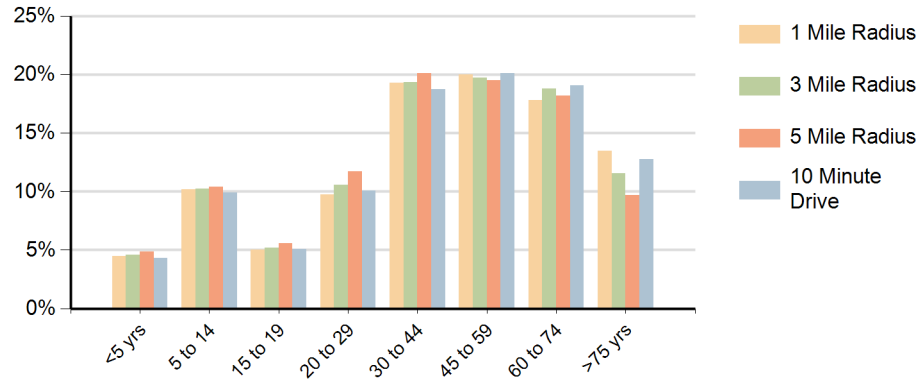
Daytime Population (10 Minute Drive)



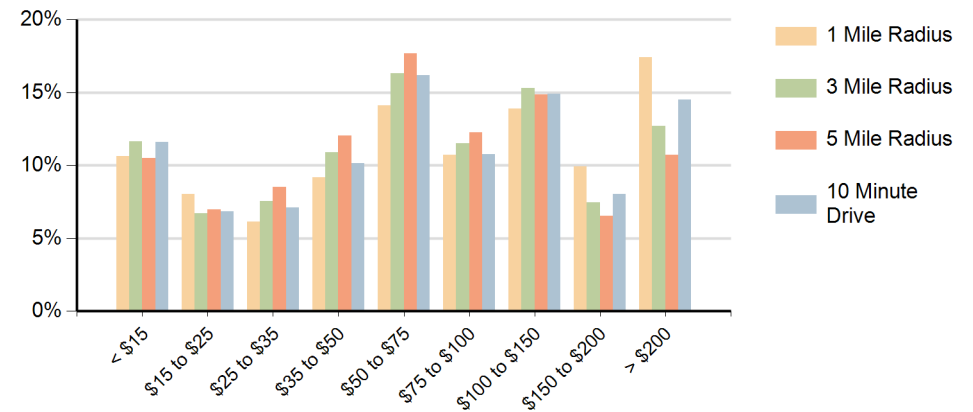
Race (10 Minute Drive)



Population by Age Range



Households by Income Range (\$000)



Avenida Walk Aventura, Florida		1 Mile Radius	3 Mile Radius	5 Mile Radius	10 Minute Drive
Population	Current Estimated Population	27,319	190,399	416,269	117,005
	2020 Census Population	26,672	188,470	411,053	117,450
	2010 Census Population	22,999	169,846	379,339	107,719
	Historical Annual Growth 2010 to 2020	1.5%	1.1%	0.8%	0.9%
	Estimated Annual Growth 2020 to 2025	0.5%	0.2%	0.2%	-0.1%
	Projected Annual Growth 2025 to 2030	3.0%	0.9%	0.7%	1.1%
Households	Current Estimated Households	12,272	82,339	170,044	51,782
	2020 Census Households	11,957	79,947	164,652	51,032
	2010 Census Households	11,055	74,269	153,280	48,317
	Historical Annual Growth 2010 to 2020	0.8%	0.7%	0.7%	0.6%
	Estimated Annual Growth 2020 to 2025	0.5%	0.6%	0.6%	0.3%
	Projected Annual Growth 2025 to 2030	2.5%	1.0%	0.9%	1.1%
Race	Population per Household	2.2	2.3	2.4	2.2
	White	54.8%	45.2%	34.6%	49.6%
	Black or African American	4.4%	16.0%	31.1%	9.3%
	American Indian	0.2%	0.4%	0.4%	0.3%
	Asian	2.3%	2.5%	2.2%	2.6%
	Pacific Islander	0.0%	0.0%	0.0%	0.0%
	2 or More Races	30.7%	26.3%	22.5%	28.6%
	Other Races	7.7%	9.6%	9.1%	9.6%
Hispanic Origin		44.4%	42.3%	37.1%	45.0%