

Bird Ludlam
Miami, Florida

1 Mile Radius

3 Mile Radius

5 Mile Radius

10 Minute Drive

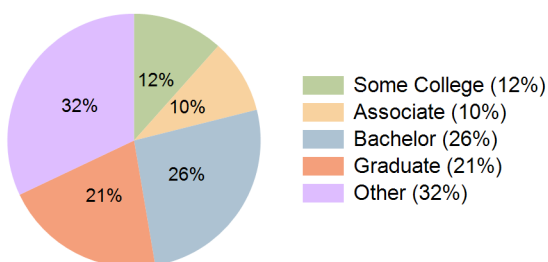
Current Year Demographics

Current Population	17,928	170,756	459,995	145,137
Total Daytime Pop	25,092	207,628	563,669	192,105
Daytime Workers	17,121	125,774	346,954	122,872
Average Household Income	\$151,598	\$150,022	\$135,082	\$143,688
Median Household Income	\$107,238	\$98,225	\$84,210	\$94,255
Total Households	6,997	64,634	176,660	55,992
Median Home Value	\$614,648	\$660,692	\$612,381	\$644,594
Bachelors Degree	30.3%	25.9%	26.2%	26.2%
Graduate Degree	20.7%	20.9%	18.5%	20.7%
Consumer Spending Index	128	127	116	122

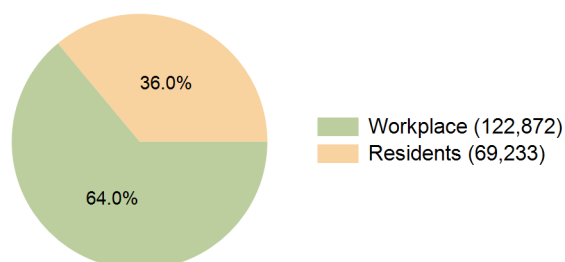
2030 Demographic Projections

Projected Population	17,661	172,135	463,115	147,733
Projected 5 Year Annual Growth Rate (Pop)	-0.3%	0.2%	0.1%	0.4%
Projected Households	6,961	66,351	180,536	58,201
Projected 5 Year Annual Growth Rate (HH)	-0.1%	0.5%	0.4%	0.8%

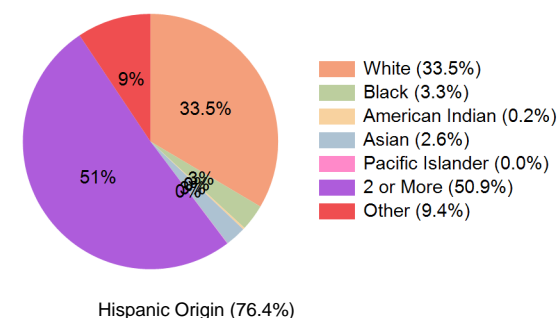
Education (10 Minute Drive)



Daytime Population (10 Minute Drive)

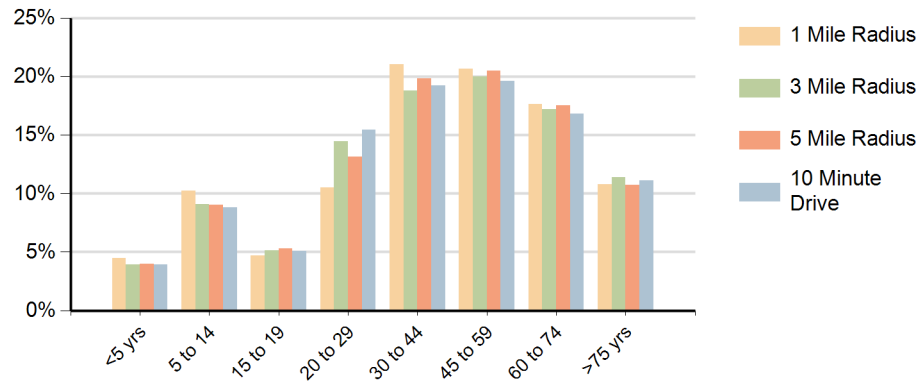


Race (10 Minute Drive)

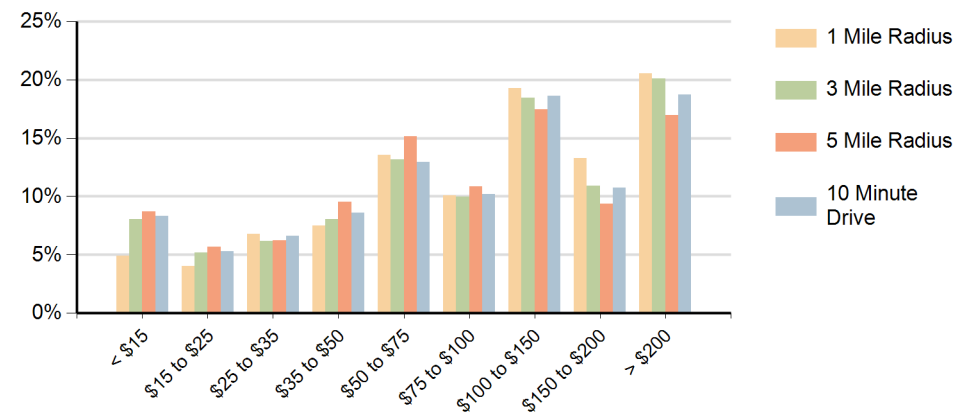


Hispanic Origin (76.4%)

Population by Age Range



Households by Income Range (\$000)



Bird Ludlam Miami, Florida		1 Mile Radius	3 Mile Radius	5 Mile Radius	10 Minute Drive
Population	Current Estimated Population	17,928	170,756	459,995	145,137
	2020 Census Population	17,059	167,970	458,342	141,716
	2010 Census Population	17,436	164,209	440,780	136,699
	Historical Annual Growth 2010 to 2020	-0.2%	0.2%	0.4%	0.4%
	Estimated Annual Growth 2020 to 2025	1.0%	0.3%	0.1%	0.5%
	Projected Annual Growth 2025 to 2030	-0.3%	0.2%	0.1%	0.4%
Households	Current Estimated Households	6,997	64,634	176,660	55,992
	2020 Census Households	6,468	61,758	171,848	53,002
	2010 Census Households	6,402	57,814	160,158	48,385
	Historical Annual Growth 2010 to 2020	0.1%	0.7%	0.7%	0.9%
	Estimated Annual Growth 2020 to 2025	1.5%	0.9%	0.5%	1.1%
	Projected Annual Growth 2025 to 2030	-0.1%	0.5%	0.4%	0.8%
Race	Population per Household	2.6	2.6	2.5	2.5
	White	35.3%	34.0%	32.0%	33.5%
	Black or African American	1.2%	3.1%	2.5%	3.3%
	American Indian	0.1%	0.2%	0.3%	0.2%
	Asian	1.3%	2.2%	2.1%	2.6%
	Pacific Islander	0.0%	0.0%	0.0%	0.0%
	2 or More Races	55.1%	51.5%	52.0%	50.9%
	Other Races	6.9%	8.9%	11.1%	9.4%
Hispanic Origin		78.5%	76.7%	79.9%	76.4%