

**Boca Village Square**  
Boca Raton, Florida

**1 Mile Radius**

**3 Mile Radius**

**5 Mile Radius**

**10 Minute Drive**

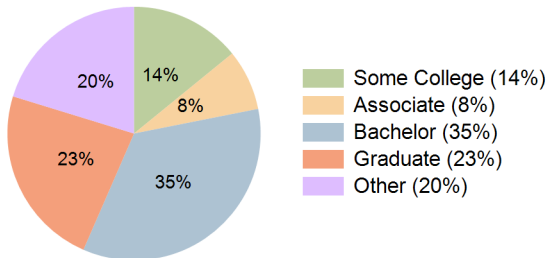
### Current Year Demographics

Current Population	14,512	102,543	287,864	93,691
Total Daytime Pop	26,274	139,316	373,640	133,312
Daytime Workers	18,294	82,146	221,860	81,750
Average Household Income	\$145,264	\$141,545	\$129,326	\$136,532
Median Household Income	\$101,717	\$92,228	\$80,514	\$87,651
Total Households	6,268	43,253	126,839	39,692
Median Home Value	\$559,056	\$599,528	\$511,136	\$582,017
Bachelors Degree	41.9%	35.5%	30.8%	34.7%
Graduate Degree	20.6%	23.8%	19.9%	23.2%
Consumer Spending Index	127	124	114	120

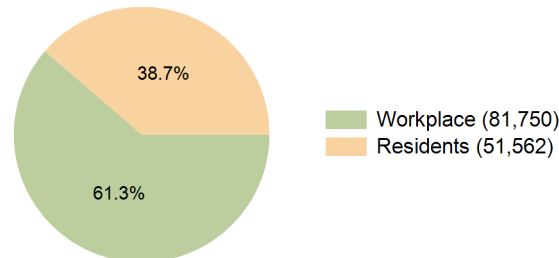
### 2029 Demographic Projections

Projected Population	14,768	104,041	290,812	95,197
Projected 5 Year Annual Growth Rate (Pop)	0.4%	0.3%	0.2%	0.3%
Projected Households	6,411	44,283	129,160	40,652
Projected 5 Year Annual Growth Rate (HH)	0.5%	0.5%	0.4%	0.5%

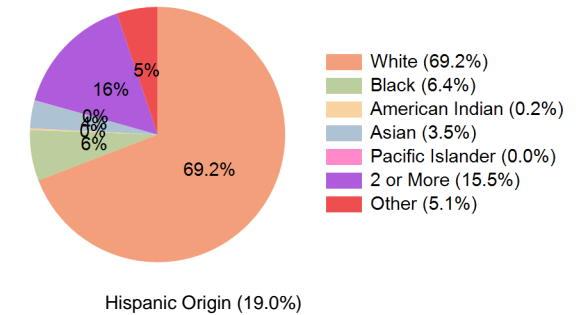
**Education (10 Minute Drive)**



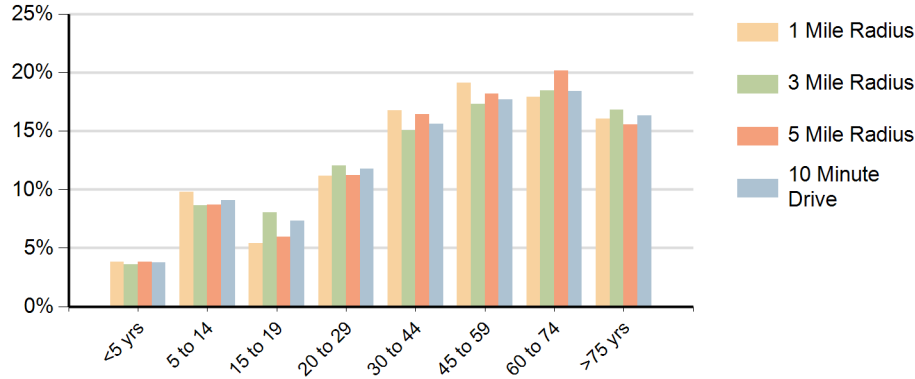
**Daytime Population (10 Minute Drive)**



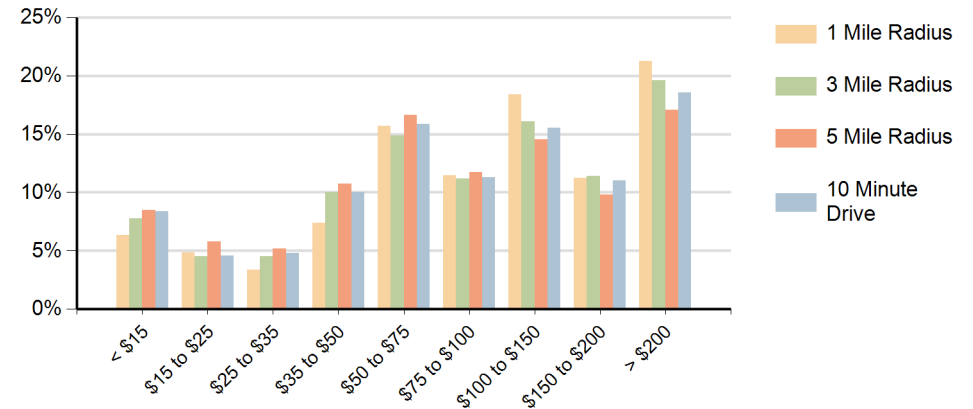
**Race (10 Minute Drive)**



## Population by Age Range



## Households by Income Range (\$000)



Boca Village Square Boca Raton, Florida		1 Mile Radius	3 Mile Radius	5 Mile Radius	10 Minute Drive
Population	Current Estimated Population	14,512	102,543	287,864	93,691
	2020 Census Population	13,875	101,490	279,469	92,283
	2010 Census Population	12,824	89,488	246,776	82,270
	Historical Annual Growth 2010 to 2020	0.8%	1.3%	1.3%	1.2%
	Estimated Annual Growth 2020 to 2024	1.1%	0.2%	0.7%	0.4%
	Projected Annual Growth 2024 to 2029	0.4%	0.3%	0.2%	0.3%
Households	Current Estimated Households	6,268	43,253	126,839	39,692
	2020 Census Households	6,111	42,661	122,545	38,949
	2010 Census Households	6,054	40,046	112,012	36,961
	Historical Annual Growth 2010 to 2020	0.1%	0.6%	0.9%	0.5%
	Estimated Annual Growth 2020 to 2024	0.6%	0.3%	0.8%	0.5%
	Projected Annual Growth 2024 to 2029	0.5%	0.5%	0.4%	0.5%
Population per Household		2.3	2.2	2.2	2.2
Race	White	71.1%	70.5%	64.6%	69.2%
	Black or African American	3.2%	6.0%	9.3%	6.4%
	American Indian	0.1%	0.2%	0.2%	0.2%
	Asian	3.5%	3.5%	3.6%	3.5%
	Pacific Islander	0.0%	0.0%	0.0%	0.0%
	2 or More Races	18.0%	15.0%	16.3%	15.5%
	Other Races	4.2%	4.8%	6.1%	5.1%
	Hispanic Origin	20.0%	18.2%	18.9%	19.0%