

Boynton Plaza
Boynton Beach, Florida

1 Mile Radius

3 Mile Radius

5 Mile Radius

10 Minute Drive

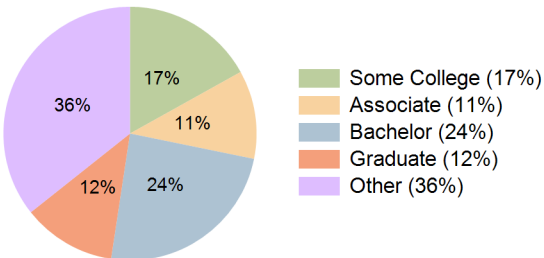
Current Year Demographics

Current Population	15,458	120,660	254,822	115,626
Total Daytime Pop	17,839	108,126	228,079	107,128
Daytime Workers	9,842	45,994	93,641	47,732
Average Household Income	\$97,778	\$108,827	\$119,541	\$105,624
Median Household Income	\$76,821	\$80,675	\$86,042	\$79,412
Total Households	7,184	54,020	111,935	50,608
Median Home Value	\$331,607	\$414,994	\$456,732	\$398,475
Bachelors Degree	22.2%	25.6%	25.0%	24.2%
Graduate Degree	12.8%	12.9%	14.7%	11.9%
Consumer Spending Index	85	94	103	92

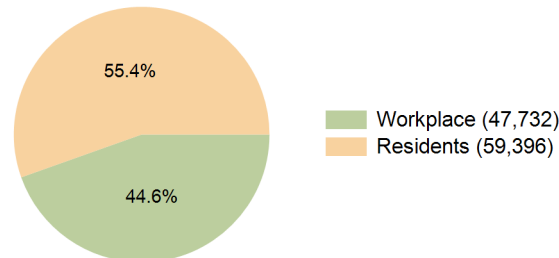
2030 Demographic Projections

Projected Population	15,385	121,458	257,817	116,460
Projected 5 Year Annual Growth Rate (Pop)	-0.1%	0.1%	0.2%	0.1%
Projected Households	7,214	54,836	114,166	51,401
Projected 5 Year Annual Growth Rate (HH)	0.1%	0.3%	0.4%	0.3%

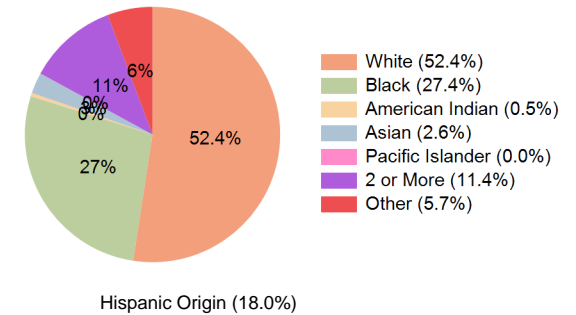
Education (10 Minute Drive)



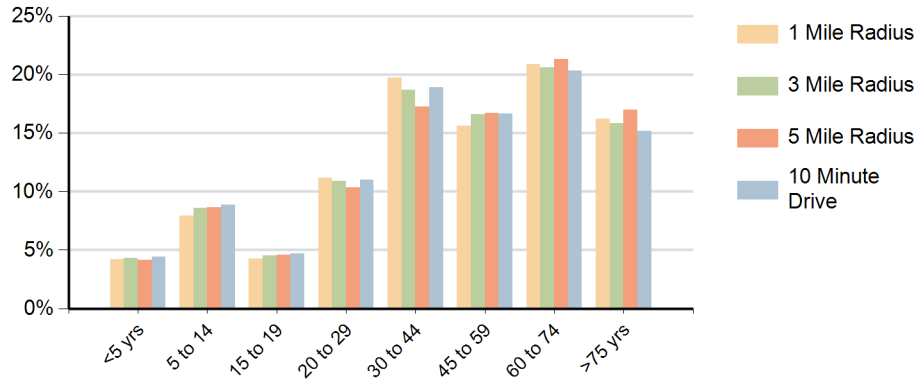
Daytime Population (10 Minute Drive)



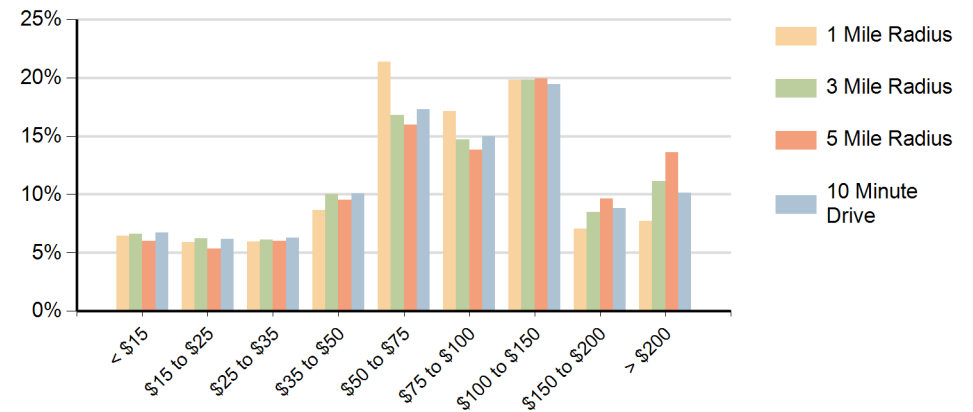
Race (10 Minute Drive)



Population by Age Range



Households by Income Range (\$000)



Boynton Plaza Boynton Beach, Florida		1 Mile Radius	3 Mile Radius	5 Mile Radius	10 Minute Drive
Population	Current Estimated Population	15,458	120,660	254,822	115,626
	2020 Census Population	14,379	118,828	249,980	113,559
	2010 Census Population	12,949	105,685	224,838	101,628
	Historical Annual Growth 2010 to 2020	1.1%	1.2%	1.1%	1.1%
	Estimated Annual Growth 2020 to 2025	1.4%	0.3%	0.4%	0.3%
	Projected Annual Growth 2025 to 2030	-0.1%	0.1%	0.2%	0.1%
Households	Current Estimated Households	7,184	54,020	111,935	50,608
	2020 Census Households	6,490	52,172	108,035	48,685
	2010 Census Households	5,818	47,069	98,439	44,175
	Historical Annual Growth 2010 to 2020	1.1%	1.0%	0.9%	1.0%
	Estimated Annual Growth 2020 to 2025	2.0%	0.7%	0.7%	0.7%
	Projected Annual Growth 2025 to 2030	0.1%	0.3%	0.4%	0.3%
	Population per Household	2.1	2.2	2.3	2.3
Race	White	54.9%	54.9%	57.4%	52.4%
	Black or African American	27.9%	25.7%	22.7%	27.4%
	American Indian	0.3%	0.4%	0.4%	0.5%
	Asian	2.2%	2.6%	2.9%	2.6%
	Pacific Islander	0.0%	0.0%	0.0%	0.0%
	2 or More Races	10.0%	11.1%	11.2%	11.4%
	Other Races	4.8%	5.3%	5.5%	5.7%
	Hispanic Origin	14.9%	17.1%	17.7%	18.0%