

Broadway Plaza  
New York, New York

1 Mile Radius

3 Mile Radius

5 Mile Radius

10 Minute Drive

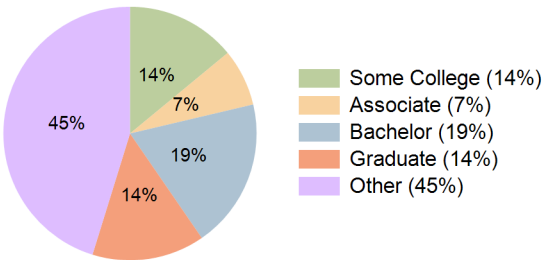
Current Year Demographics

Current Population	134,856	872,403	1,967,080	360,069
Total Daytime Pop	110,265	734,204	1,708,099	320,441
Daytime Workers	36,285	235,008	588,644	123,882
Average Household Income	\$91,015	\$76,324	\$81,639	\$92,128
Median Household Income	\$58,872	\$51,491	\$53,163	\$60,688
Total Households	53,515	325,287	744,317	138,074
Median Home Value	\$502,751	\$581,299	\$580,024	\$564,869
Bachelors Degree	19.6%	16.4%	17.4%	19.1%
Graduate Degree	16.6%	10.8%	11.3%	14.4%
Consumer Spending Index	81	69	73	82

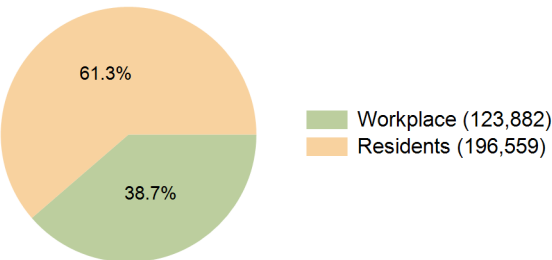
2029 Demographic Projections

Projected Population	133,197	863,171	1,949,772	358,522
Projected 5 Year Annual Growth Rate (Pop)	-0.3%	-0.2%	-0.2%	-0.1%
Projected Households	54,467	331,545	757,049	140,560
Projected 5 Year Annual Growth Rate (HH)	0.4%	0.4%	0.3%	0.4%

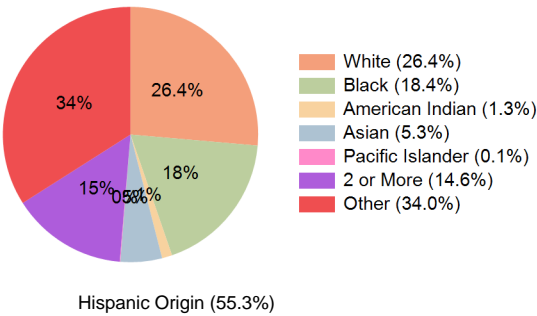
Education (10 Minute Drive)



Daytime Population (10 Minute Drive)

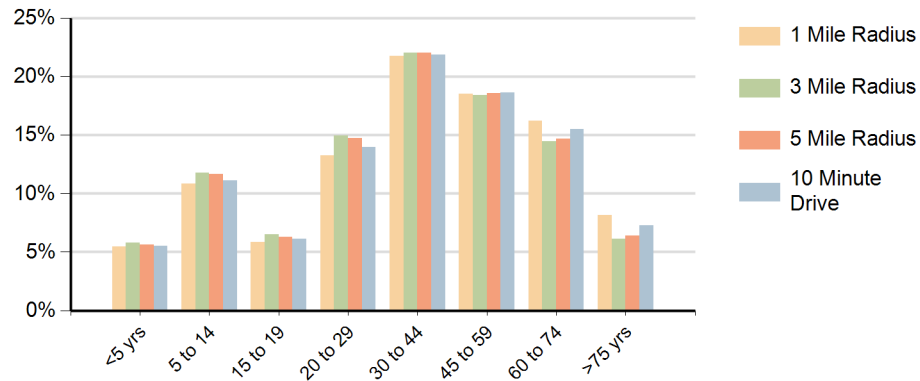


Race (10 Minute Drive)

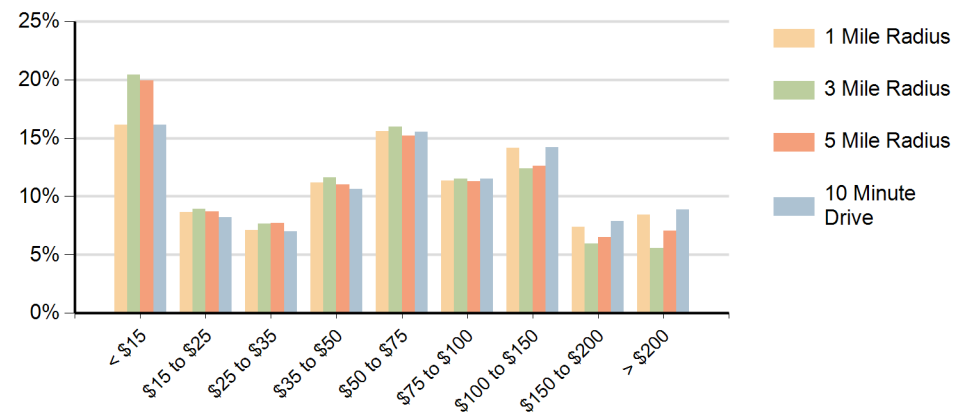


Hispanic Origin (55.3%)

### Population by Age Range



### Households by Income Range (\$000)



Broadway Plaza New York, New York		1 Mile Radius	3 Mile Radius	5 Mile Radius	10 Minute Drive
Population	Current Estimated Population	134,856	872,403	1,967,080	360,069
	2020 Census Population	140,419	913,856	2,044,727	374,348
	2010 Census Population	135,864	883,440	1,930,613	357,728
	Historical Annual Growth 2010 to 2020	0.3%	0.3%	0.6%	0.5%
	Estimated Annual Growth 2020 to 2024	-1.0%	-1.1%	-0.9%	-0.9%
	Projected Annual Growth 2024 to 2029	-0.3%	-0.2%	-0.2%	-0.1%
Households	Current Estimated Households	53,515	325,287	744,317	138,074
	2020 Census Households	54,288	330,366	752,742	140,253
	2010 Census Households	52,191	312,252	697,762	133,577
	Historical Annual Growth 2010 to 2020	0.4%	0.6%	0.8%	0.5%
	Estimated Annual Growth 2020 to 2024	-0.3%	-0.4%	-0.3%	-0.4%
	Projected Annual Growth 2024 to 2029	0.4%	0.4%	0.3%	0.4%
Race	Population per Household	2.4	2.6	2.6	2.5
	White	24.5%	16.6%	16.2%	26.4%
	Black or African American	16.7%	26.3%	31.0%	18.4%
	American Indian	1.3%	1.5%	1.4%	1.3%
	Asian	4.6%	4.2%	6.2%	5.3%
	Pacific Islander	0.1%	0.1%	0.1%	0.1%
	2 or More Races	15.9%	14.2%	13.2%	14.6%
	Other Races	36.9%	37.2%	31.9%	34.0%
Hispanic Origin		60.1%	59.0%	52.0%	55.3%