

Buckhead Station
Atlanta, Georgia

1 Mile Radius

3 Mile Radius

5 Mile Radius

10 Minute Drive

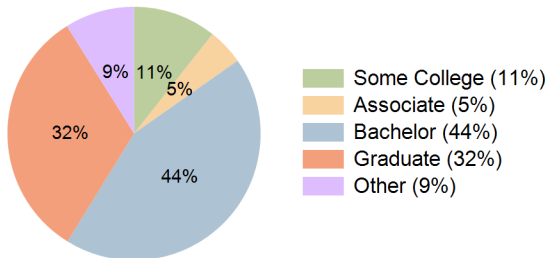
Current Year Demographics

Current Population	24,232	137,859	324,928	79,439
Total Daytime Pop	82,298	190,619	524,155	160,321
Daytime Workers	73,171	139,105	398,096	132,250
Average Household Income	\$165,909	\$175,396	\$173,782	\$160,755
Median Household Income	\$115,302	\$116,804	\$116,671	\$108,057
Total Households	15,108	70,843	161,254	43,962
Median Home Value	\$651,838	\$742,423	\$688,714	\$679,444
Bachelors Degree	47.6%	44.0%	42.2%	43.5%
Graduate Degree	32.5%	33.5%	35.0%	32.3%
Consumer Spending Index	145	153	152	141

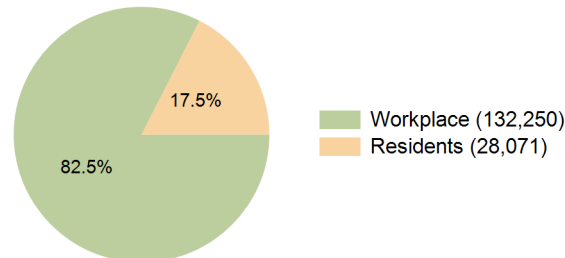
2029 Demographic Projections

Projected Population	24,906	138,905	335,009	80,094
Projected 5 Year Annual Growth Rate (Pop)	0.6%	0.2%	0.6%	0.2%
Projected Households	15,976	72,871	170,115	45,457
Projected 5 Year Annual Growth Rate (HH)	1.1%	0.6%	1.1%	0.7%

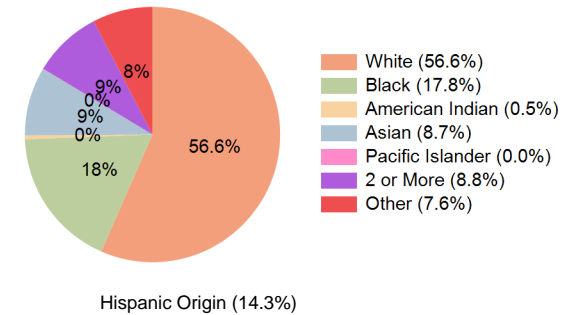
Education (10 Minute Drive)



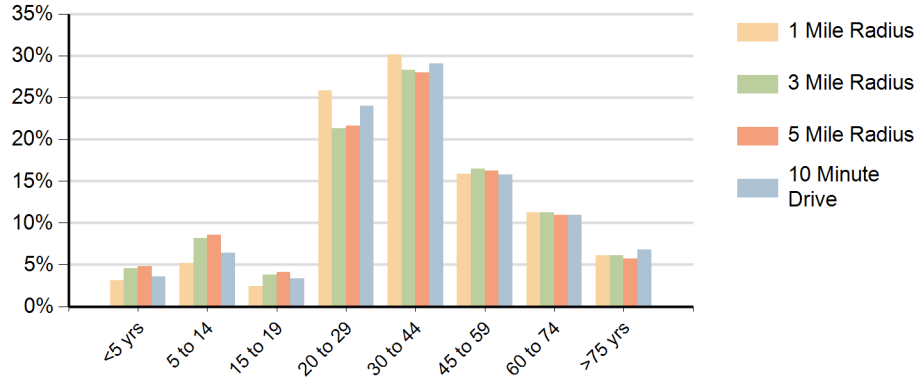
Daytime Population (10 Minute Drive)



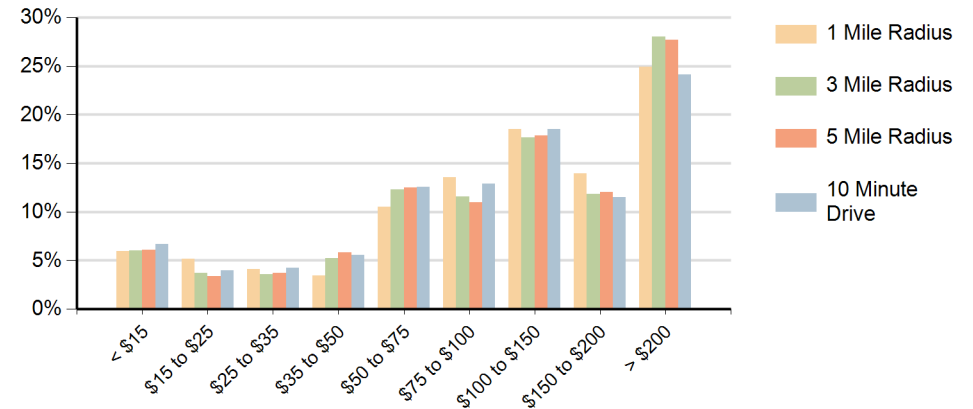
Race (10 Minute Drive)



Population by Age Range



Households by Income Range (\$000)



Buckhead Station Atlanta, Georgia		1 Mile Radius	3 Mile Radius	5 Mile Radius	10 Minute Drive
Population	Current Estimated Population	24,232	137,859	324,928	79,439
	2020 Census Population	20,994	132,924	315,470	75,639
	2010 Census Population	13,349	113,057	261,388	61,847
	Historical Annual Growth 2010 to 2020	4.6%	1.6%	1.9%	2.0%
	Estimated Annual Growth 2020 to 2024	3.4%	0.9%	0.7%	1.2%
	Projected Annual Growth 2024 to 2029	0.6%	0.2%	0.6%	0.2%
Households	Current Estimated Households	15,108	70,843	161,254	43,962
	2020 Census Households	12,901	67,210	154,449	41,111
	2010 Census Households	7,950	54,898	124,507	32,051
	Historical Annual Growth 2010 to 2020	5.0%	2.0%	2.2%	2.5%
	Estimated Annual Growth 2020 to 2024	3.8%	1.3%	1.0%	1.6%
	Projected Annual Growth 2024 to 2029	1.1%	0.6%	1.1%	0.7%
	Population per Household	1.6	1.9	2.0	1.8
Race	White	65.2%	61.0%	60.2%	56.6%
	Black or African American	15.6%	15.0%	14.8%	17.8%
	American Indian	0.3%	0.6%	0.5%	0.5%
	Asian	8.6%	7.5%	8.4%	8.7%
	Pacific Islander	0.0%	0.0%	0.0%	0.0%
	2 or More Races	7.8%	8.7%	8.9%	8.8%
	Other Races	2.7%	7.2%	7.2%	7.6%
	Hispanic Origin	7.6%	14.2%	14.1%	14.3%