

Cashmere Corners  
Port St. Lucie, Florida

1 Mile Radius

3 Mile Radius

5 Mile Radius

10 Minute Drive

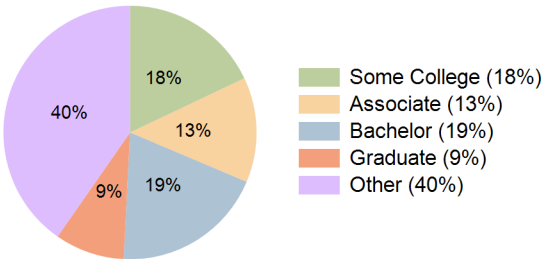
Current Year Demographics

Current Population	8,355	79,893	169,529	75,964
Total Daytime Pop	10,669	70,842	151,351	68,242
Daytime Workers	5,345	25,003	54,089	25,117
Average Household Income	\$98,187	\$96,889	\$94,923	\$95,796
Median Household Income	\$70,724	\$78,380	\$77,433	\$77,816
Total Households	3,846	30,089	64,255	28,224
Median Home Value	\$353,254	\$363,870	\$370,318	\$361,175
Bachelors Degree	21.1%	20.4%	19.5%	19.5%
Graduate Degree	11.7%	8.7%	9.0%	8.9%
Consumer Spending Index	88	86	84	85

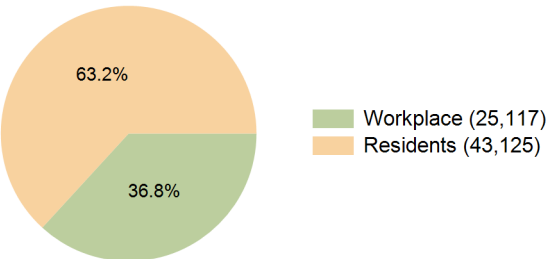
2029 Demographic Projections

Projected Population	8,707	86,976	187,846	82,946
Projected 5 Year Annual Growth Rate (Pop)	0.8%	1.7%	2.1%	1.8%
Projected Households	3,969	32,425	70,689	30,511
Projected 5 Year Annual Growth Rate (HH)	0.6%	1.5%	1.9%	1.6%

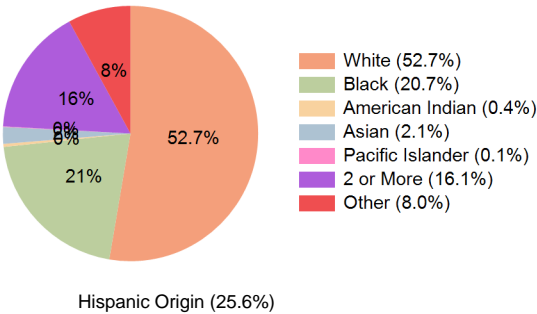
Education (10 Minute Drive)



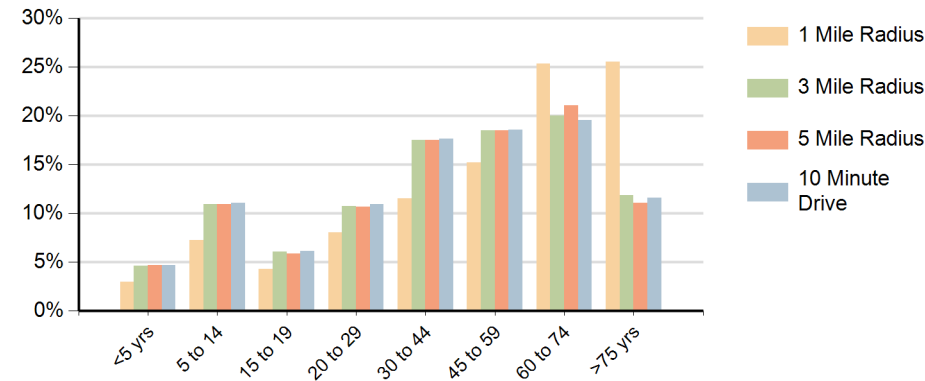
Daytime Population (10 Minute Drive)



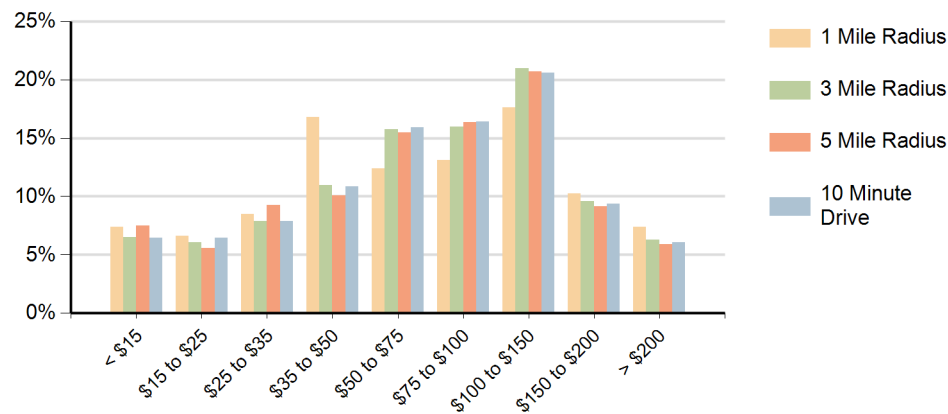
Race (10 Minute Drive)



Population by Age Range



Households by Income Range (\$000)



Cashmere Corners Port St. Lucie, Florida		1 Mile Radius	3 Mile Radius	5 Mile Radius	10 Minute Drive
Population	Current Estimated Population	8,355	79,893	169,529	75,964
	2020 Census Population	8,032	72,919	152,161	69,082
	2010 Census Population	7,309	61,621	124,757	58,733
	Historical Annual Growth 2010 to 2020	1.0%	1.7%	2.0%	1.6%
	Estimated Annual Growth 2020 to 2024	0.9%	2.2%	2.6%	2.3%
	Projected Annual Growth 2024 to 2029	0.8%	1.7%	2.1%	1.8%
Households	Current Estimated Households	3,846	30,089	64,255	28,224
	2020 Census Households	3,748	27,828	58,220	25,994
	2010 Census Households	3,391	23,648	47,640	22,308
	Historical Annual Growth 2010 to 2020	1.0%	1.6%	2.0%	1.5%
	Estimated Annual Growth 2020 to 2024	0.6%	1.9%	2.4%	2.0%
	Projected Annual Growth 2024 to 2029	0.6%	1.5%	1.9%	1.6%
Race	Population per Household	2.2	2.7	2.6	2.7
	White	65.4%	53.2%	55.4%	52.7%
	Black or African American	12.5%	20.4%	19.3%	20.7%
	American Indian	0.2%	0.4%	0.4%	0.4%
	Asian	2.3%	2.2%	2.2%	2.1%
	Pacific Islander	0.1%	0.1%	0.1%	0.1%
	2 or More Races	13.5%	16.0%	15.3%	16.1%
	Other Races	6.1%	7.8%	7.4%	8.0%
Hispanic Origin		21.2%	25.3%	23.9%	25.6%