

**Circle Center West**  
Long Beach, California

**1 Mile Radius**

**3 Mile Radius**

**5 Mile Radius**

**10 Minute Drive**

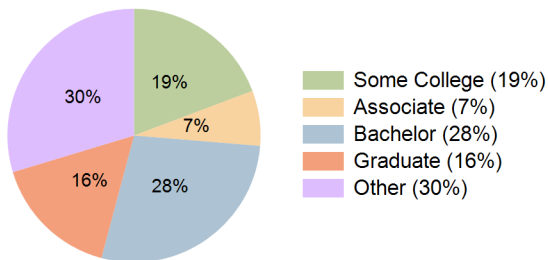
### Current Year Demographics

Current Population	30,027	238,834	509,807	211,396
Total Daytime Pop	27,253	228,179	501,537	213,744
Daytime Workers	13,332	112,488	245,046	109,570
Average Household Income	\$119,709	\$121,820	\$124,148	\$129,338
Median Household Income	\$88,264	\$85,107	\$87,513	\$92,669
Total Households	12,438	97,527	198,577	82,376
Median Home Value	\$850,890	\$897,204	\$842,465	\$893,838
Bachelors Degree	32.2%	27.8%	26.2%	27.8%
Graduate Degree	15.4%	15.8%	14.7%	16.2%
Consumer Spending Index	105	107	109	113

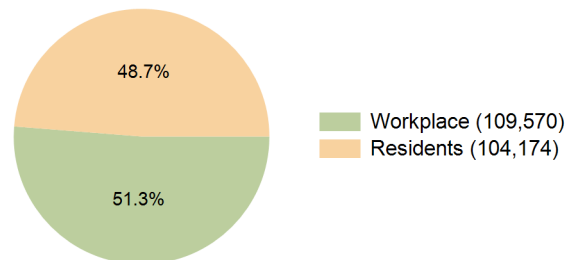
### 2029 Demographic Projections

Projected Population	29,193	231,610	496,799	204,479
Projected 5 Year Annual Growth Rate (Pop)	-0.6%	-0.6%	-0.5%	-0.7%
Projected Households	12,388	97,342	199,422	81,889
Projected 5 Year Annual Growth Rate (HH)	-0.1%	0.0%	0.1%	-0.1%

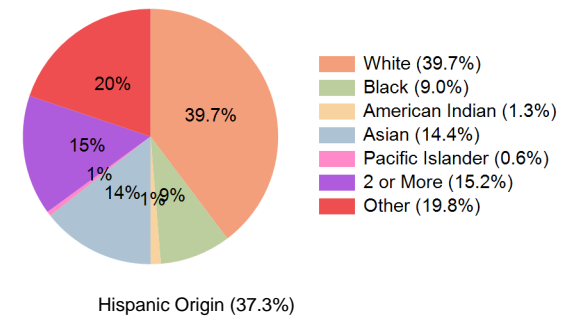
**Education (10 Minute Drive)**



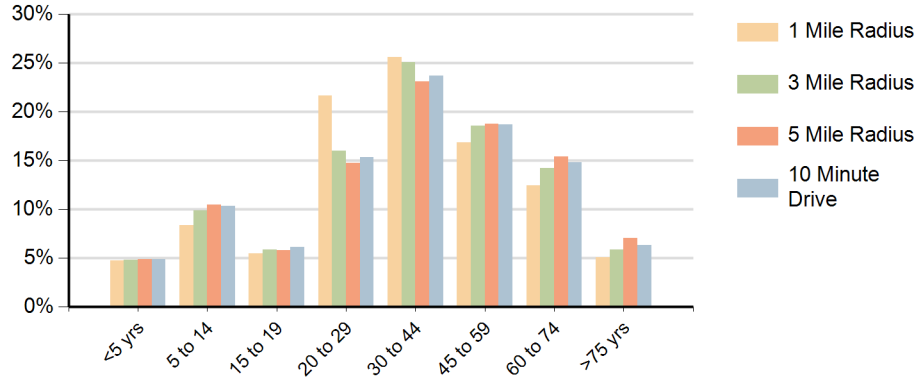
**Daytime Population (10 Minute Drive)**



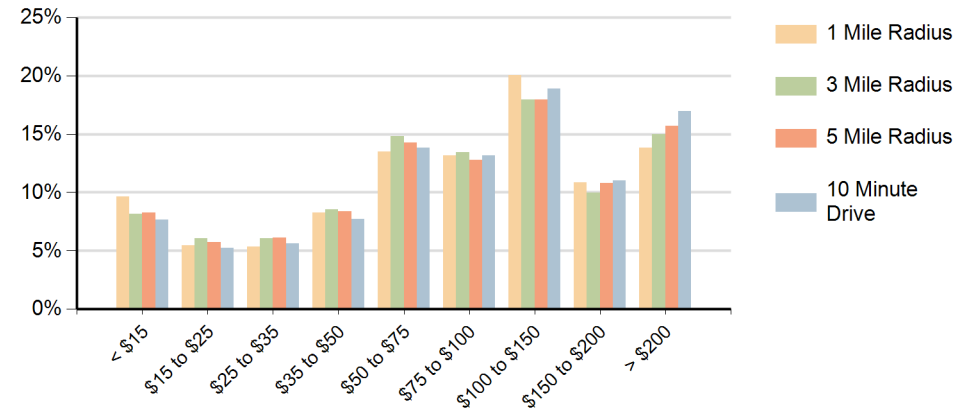
**Race (10 Minute Drive)**



## Population by Age Range



## Households by Income Range (\$000)



Circle Center West Long Beach, California		1 Mile Radius	3 Mile Radius	5 Mile Radius	10 Minute Drive
Population	Current Estimated Population	30,027	238,834	509,807	211,396
	2020 Census Population	31,219	247,550	525,591	219,956
	2010 Census Population	29,801	247,015	516,455	218,971
	Historical Annual Growth 2010 to 2020	0.5%	0.0%	0.2%	0.0%
	Estimated Annual Growth 2020 to 2024	-0.9%	-0.8%	-0.7%	-0.9%
	Projected Annual Growth 2024 to 2029	-0.6%	-0.6%	-0.5%	-0.7%
Households	Current Estimated Households	12,438	97,527	198,577	82,376
	2020 Census Households	12,569	98,332	199,069	83,428
	2010 Census Households	12,387	95,640	191,611	81,778
	Historical Annual Growth 2010 to 2020	0.2%	0.3%	0.4%	0.2%
	Estimated Annual Growth 2020 to 2024	-0.3%	-0.2%	-0.1%	-0.3%
	Projected Annual Growth 2024 to 2029	-0.1%	0.0%	0.1%	-0.1%
Population per Household		2.3	2.4	2.5	2.5
Race	White	39.9%	39.3%	36.2%	39.7%
	Black or African American	11.1%	9.4%	10.3%	9.0%
	American Indian	1.5%	1.4%	1.3%	1.3%
	Asian	14.6%	12.9%	14.8%	14.4%
	Pacific Islander	0.6%	0.5%	0.8%	0.6%
	2 or More Races	15.6%	14.8%	15.1%	15.2%
	Other Races	16.7%	21.7%	21.5%	19.8%
	Hispanic Origin	34.6%	39.0%	39.2%	37.3%