

**Clocktower Plaza**  
Ozone Park, New York

**1 Mile Radius**

**3 Mile Radius**

**5 Mile Radius**

**10 Minute Drive**

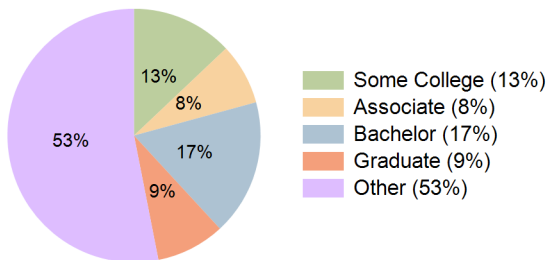
### Current Year Demographics

Current Population	119,990	743,748	2,108,542	288,185
Total Daytime Pop	84,727	595,359	1,707,848	213,372
Daytime Workers	20,437	195,825	583,098	56,630
Average Household Income	\$114,015	\$110,103	\$101,741	\$107,171
Median Household Income	\$84,445	\$79,922	\$73,205	\$78,706
Total Households	35,232	257,364	733,847	90,921
Median Home Value	\$736,046	\$732,804	\$752,717	\$719,115
Bachelors Degree	19.1%	20.3%	20.7%	17.4%
Graduate Degree	8.6%	12.2%	11.4%	8.8%
Consumer Spending Index	100	97	90	94

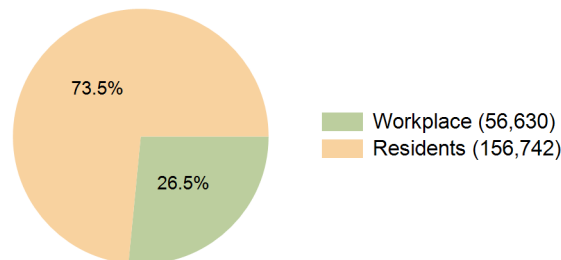
### 2029 Demographic Projections

Projected Population	118,432	742,931	2,101,399	285,251
Projected 5 Year Annual Growth Rate (Pop)	-0.3%	0.0%	-0.1%	-0.2%
Projected Households	34,724	258,100	735,556	90,380
Projected 5 Year Annual Growth Rate (HH)	-0.3%	0.1%	0.1%	-0.1%

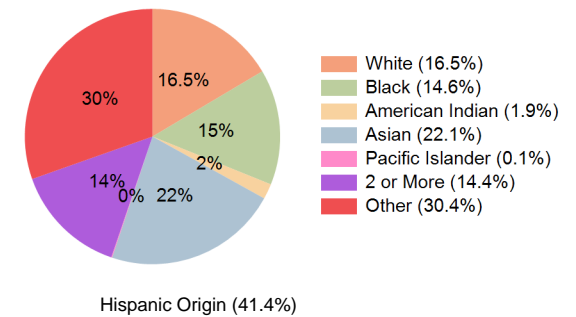
**Education (10 Minute Drive)**



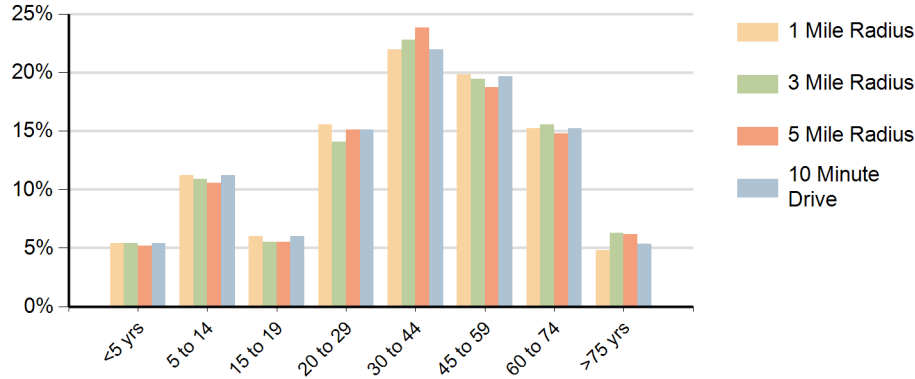
**Daytime Population (10 Minute Drive)**



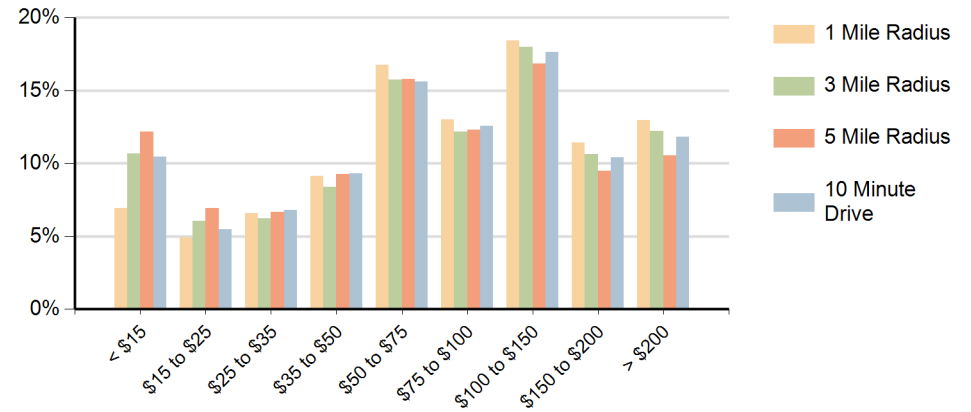
**Race (10 Minute Drive)**



## Population by Age Range



## Households by Income Range (\$000)



Clocktower Plaza Ozone Park, New York		1 Mile Radius	3 Mile Radius	5 Mile Radius	10 Minute Drive
Population	Current Estimated Population	119,990	743,748	2,108,542	288,185
	2020 Census Population	123,362	760,469	2,151,679	296,423
	2010 Census Population	113,392	703,530	1,995,388	276,230
	Historical Annual Growth 2010 to 2020	0.9%	0.8%	0.8%	0.7%
	Estimated Annual Growth 2020 to 2024	-0.7%	-0.5%	-0.5%	-0.7%
	Projected Annual Growth 2024 to 2029	-0.3%	0.0%	-0.1%	-0.2%
Households	Current Estimated Households	35,232	257,364	733,847	90,921
	2020 Census Households	36,164	261,293	742,484	92,916
	2010 Census Households	33,582	242,009	680,576	86,092
	Historical Annual Growth 2010 to 2020	0.7%	0.8%	0.9%	0.8%
	Estimated Annual Growth 2020 to 2024	-0.6%	-0.4%	-0.3%	-0.5%
	Projected Annual Growth 2024 to 2029	-0.3%	0.1%	0.1%	-0.1%
Population per Household		3.4	2.8	2.8	3.2
Race	White	14.6%	23.2%	18.3%	16.5%
	Black or African American	7.2%	20.0%	28.6%	14.6%
	American Indian	2.3%	1.6%	1.4%	1.9%
	Asian	26.1%	19.5%	19.9%	22.1%
	Pacific Islander	0.1%	0.1%	0.1%	0.1%
	2 or More Races	15.0%	12.9%	11.0%	14.4%
	Other Races	34.8%	22.8%	20.7%	30.4%
	Hispanic Origin	47.4%	32.5%	30.9%	41.4%