

Concord Shopping Plaza
Miami, Florida

1 Mile Radius

3 Mile Radius

5 Mile Radius

10 Minute Drive

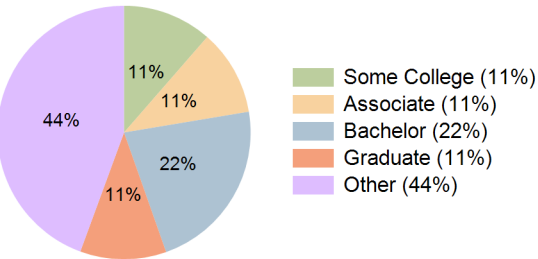
Current Year Demographics

Current Population	17,586	195,773	469,637	130,801
Total Daytime Pop	15,160	156,023	449,378	112,784
Daytime Workers	6,457	61,861	229,705	49,618
Average Household Income	\$107,736	\$99,052	\$105,655	\$102,328
Median Household Income	\$84,148	\$77,603	\$80,483	\$79,271
Total Households	5,542	64,826	164,886	42,667
Median Home Value	\$517,846	\$474,712	\$482,776	\$492,032
Bachelors Degree	23.8%	22.6%	24.6%	22.2%
Graduate Degree	10.3%	10.6%	12.7%	11.0%
Consumer Spending Index	94	87	93	90

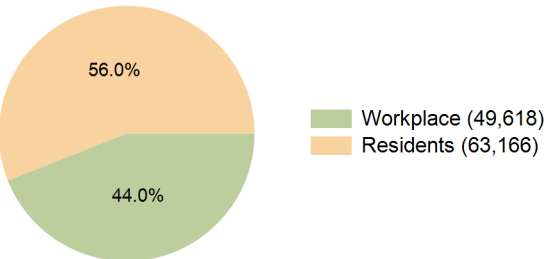
2029 Demographic Projections

Projected Population	16,784	188,613	457,255	125,519
Projected 5 Year Annual Growth Rate (Pop)	-0.9%	-0.7%	-0.5%	-0.8%
Projected Households	5,421	63,824	164,178	41,818
Projected 5 Year Annual Growth Rate (HH)	-0.4%	-0.3%	-0.1%	-0.4%

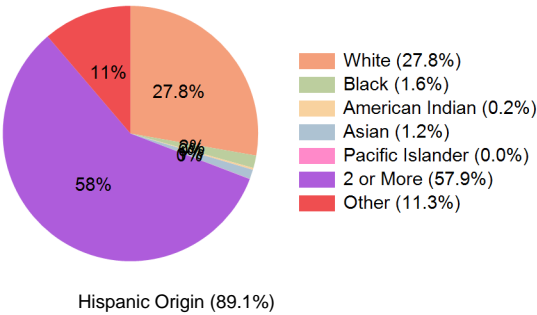
Education (10 Minute Drive)



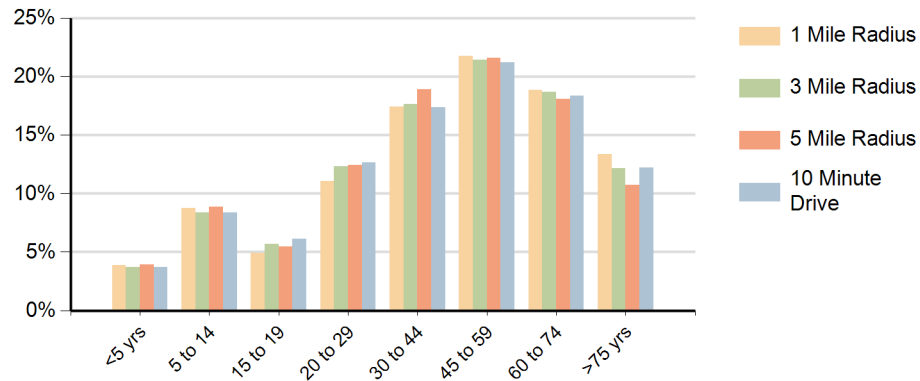
Daytime Population (10 Minute Drive)



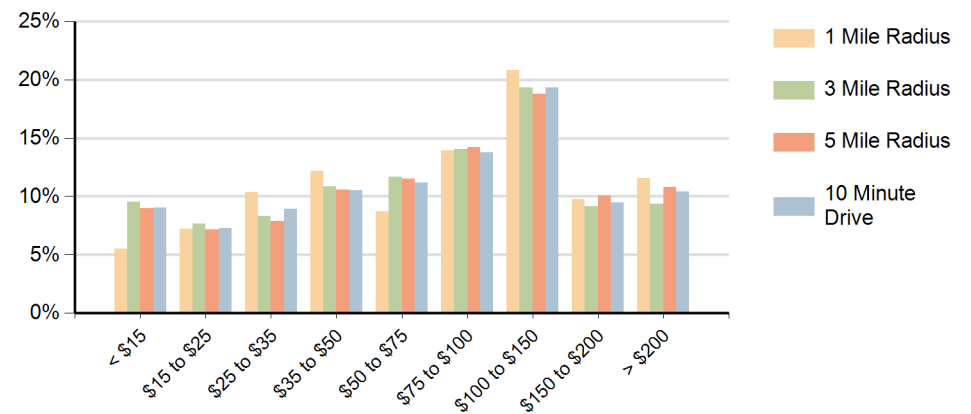
Race (10 Minute Drive)



Population by Age Range



Households by Income Range (\$000)



Concord Shopping Plaza Miami, Florida		1 Mile Radius	3 Mile Radius	5 Mile Radius	10 Minute Drive
Population	Current Estimated Population	17,586	195,773	469,637	130,801
	2020 Census Population	18,236	201,178	479,693	135,131
	2010 Census Population	18,849	203,927	469,614	137,684
	Historical Annual Growth 2010 to 2020	-0.3%	-0.1%	0.2%	-0.2%
	Estimated Annual Growth 2020 to 2024	-0.9%	-0.6%	-0.5%	-0.8%
	Projected Annual Growth 2024 to 2029	-0.9%	-0.7%	-0.5%	-0.8%
Households	Current Estimated Households	5,542	64,826	164,886	42,667
	2020 Census Households	5,647	65,662	165,532	43,422
	2010 Census Households	5,587	64,367	156,240	42,788
	Historical Annual Growth 2010 to 2020	0.1%	0.2%	0.6%	0.2%
	Estimated Annual Growth 2020 to 2024	-0.4%	-0.3%	-0.1%	-0.4%
	Projected Annual Growth 2024 to 2029	-0.4%	-0.3%	-0.1%	-0.4%
Race	Population per Household	3.2	2.9	2.8	3.0
	White	27.1%	27.4%	28.0%	27.8%
	Black or African American	0.6%	1.3%	1.5%	1.6%
	American Indian	0.2%	0.2%	0.2%	0.2%
	Asian	1.0%	1.2%	1.6%	1.2%
	Pacific Islander	0.0%	0.0%	0.0%	0.0%
	2 or More Races	61.4%	58.3%	57.2%	57.9%
	Other Races	9.6%	11.6%	11.5%	11.3%
Hispanic Origin		91.3%	89.8%	87.6%	89.1%