

Copps Hill Plaza  
Ridgefield, Connecticut

1 Mile Radius

3 Mile Radius

5 Mile Radius

10 Minute Drive

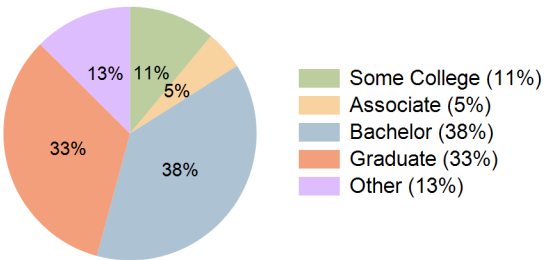
Current Year Demographics

|                          |           |           |           |           |
|--------------------------|-----------|-----------|-----------|-----------|
| Current Population       | 4,270     | 21,307    | 39,891    | 15,753    |
| Total Daytime Pop        | 7,285     | 20,257    | 34,310    | 15,925    |
| Daytime Workers          | 5,125     | 9,473     | 14,677    | 7,834     |
| Average Household Income | \$175,805 | \$233,349 | \$234,330 | \$224,822 |
| Median Household Income  | \$107,638 | \$166,082 | \$169,234 | \$156,612 |
| Total Households         | 1,980     | 7,804     | 14,603    | 5,975     |
| Median Home Value        | \$795,583 | \$758,475 | \$742,797 | \$754,887 |
| Bachelors Degree         | 38.6%     | 38.4%     | 38.0%     | 38.2%     |
| Graduate Degree          | 28.6%     | 34.5%     | 33.0%     | 33.2%     |
| Consumer Spending Index  | 149       | 197       | 198       | 190       |

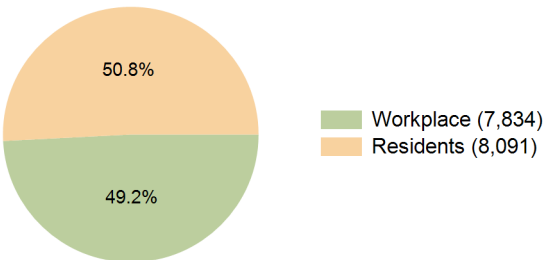
2029 Demographic Projections

|   |       |        |        |        |
|---|-------|--------|--------|--------|
| Projected Population                      | 4,191 | 20,926 | 39,250 | 15,448 |
| Projected 5 Year Annual Growth Rate (Pop) | -0.4% | -0.4%  | -0.3%  | -0.4%  |
| Projected Households                      | 1,968 | 7,774  | 14,531 | 5,944  |
| Projected 5 Year Annual Growth Rate (HH)  | -0.1% | -0.1%  | -0.1%  | -0.1%  |

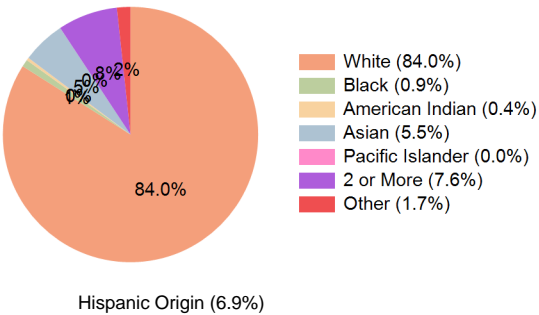
Education (10 Minute Drive)



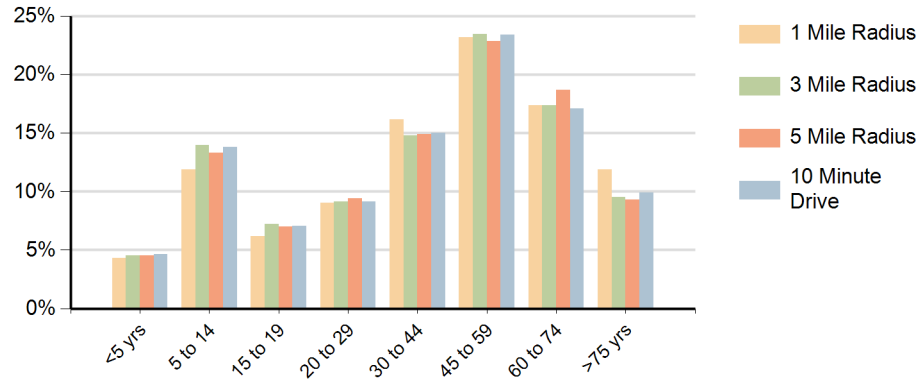
Daytime Population (10 Minute Drive)



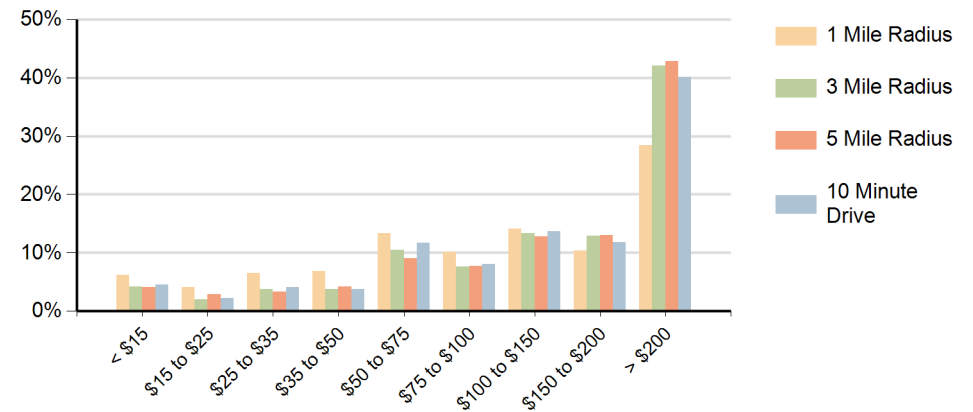
Race (10 Minute Drive)



### Population by Age Range



### Households by Income Range (\$000)



| Copps Hill Plaza<br>Ridgefield, Connecticut |                                       | 1 Mile Radius | 3 Mile Radius | 5 Mile Radius | 10 Minute Drive |
|---|---------------------------------------|---------------|---------------|---------------|-----------------|
| Population                                  | Current Estimated Population          | 4,270         | 21,307        | 39,891        | 15,753          |
|   | 2020 Census Population                | 4,258         | 21,459        | 40,424        | 15,915          |
|   | 2010 Census Population                | 3,913         | 21,065        | 40,380        | 15,516          |
|   | Historical Annual Growth 2010 to 2020 | 0.9%          | 0.2%          | 0.0%          | 0.3%            |
|   | Estimated Annual Growth 2020 to 2024  | 0.1%          | -0.2%         | -0.3%         | -0.2%           |
|   | Projected Annual Growth 2024 to 2029  | -0.4%         | -0.4%         | -0.3%         | -0.4%           |
| Households                                  | Current Estimated Households          | 1,980         | 7,804         | 14,603        | 5,975           |
|   | 2020 Census Households                | 1,989         | 7,815         | 14,640        | 5,987           |
|   | 2010 Census Households                | 1,887         | 7,634         | 14,584        | 5,823           |
|   | Historical Annual Growth 2010 to 2020 | 0.5%          | 0.2%          | 0.0%          | 0.3%            |
|   | Estimated Annual Growth 2020 to 2024  | -0.1%         | 0.0%          | -0.1%         | -0.1%           |
|   | Projected Annual Growth 2024 to 2029  | -0.1%         | -0.1%         | -0.1%         | -0.1%           |
| Race  | Population per Household              | 2.2           | 2.7           | 2.7           | 2.6             |
|   | White                                 | 82.4%         | 84.3%         | 83.1%         | 84.0%           |
|   | Black or African American             | 0.9%          | 0.9%          | 1.2%          | 0.9%            |
|   | American Indian                       | 0.5%          | 0.4%          | 0.3%          | 0.4%            |
|   | Asian                                 | 6.8%          | 5.2%          | 5.0%          | 5.5%            |
|   | Pacific Islander                      | 0.0%          | 0.0%          | 0.0%          | 0.0%            |
|   | 2 or More Races                       | 7.3%          | 7.7%          | 8.3%          | 7.6%            |
|   | Other Races                           | 2.2%          | 1.6%          | 2.2%          | 1.7%            |
| Hispanic Origin                             |                                       | 7.9%          | 6.8%          | 7.8%          | 6.9%            |