

Culver Center Culver City, California	1 Mile Radius	3 Mile Radius	5 Mile Radius	10 Minute Drive
--	---------------	---------------	---------------	-----------------

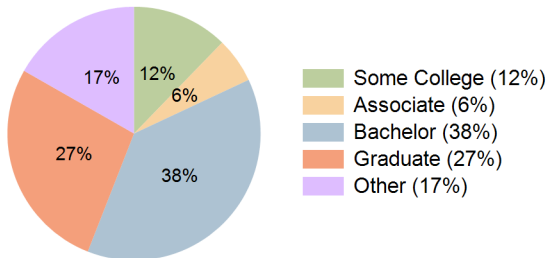
Current Year Demographics

Current Population	50,836	279,741	812,293	177,689
Total Daytime Pop	54,324	352,516	1,096,595	205,607
Daytime Workers	35,806	230,024	722,037	130,760
Average Household Income	\$136,237	\$165,441	\$157,551	\$159,739
Median Household Income	\$100,122	\$111,619	\$105,854	\$107,693
Total Households	24,816	123,718	367,075	79,027
Median Home Value	\$1,395,775	\$1,420,604	\$1,375,102	\$1,415,072
Bachelors Degree	40.8%	37.6%	36.6%	37.9%
Graduate Degree	28.8%	27.7%	25.3%	27.3%
Consumer Spending Index	119	143	137	138

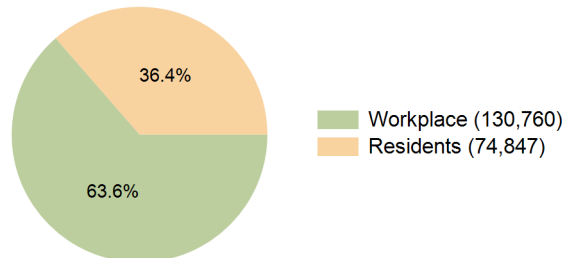
2029 Demographic Projections

Projected Population	51,849	280,944	809,913	178,926
Projected 5 Year Annual Growth Rate (Pop)	0.4%	0.1%	-0.1%	0.1%
Projected Households	26,087	127,766	376,139	81,939
Projected 5 Year Annual Growth Rate (HH)	1.0%	0.7%	0.5%	0.7%

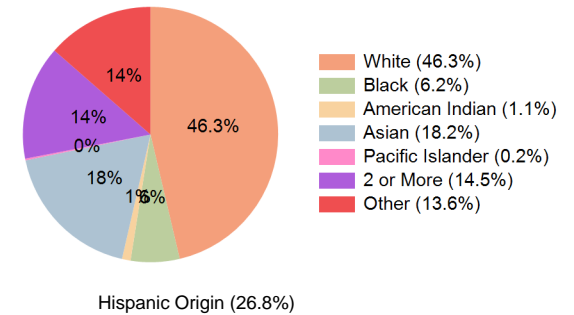
Education (10 Minute Drive)



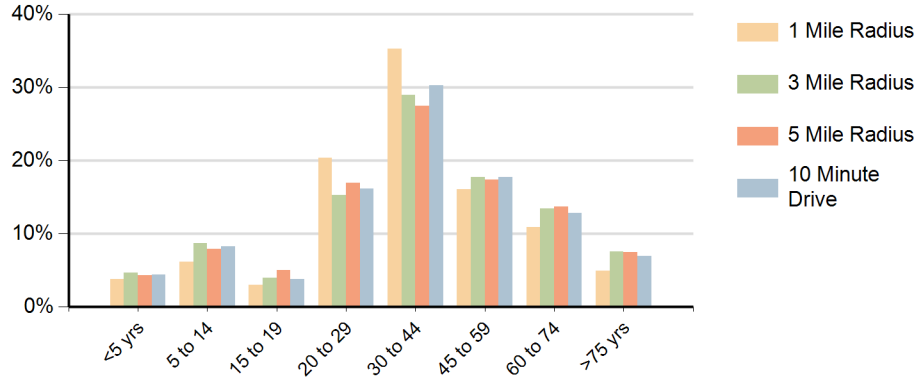
Daytime Population (10 Minute Drive)



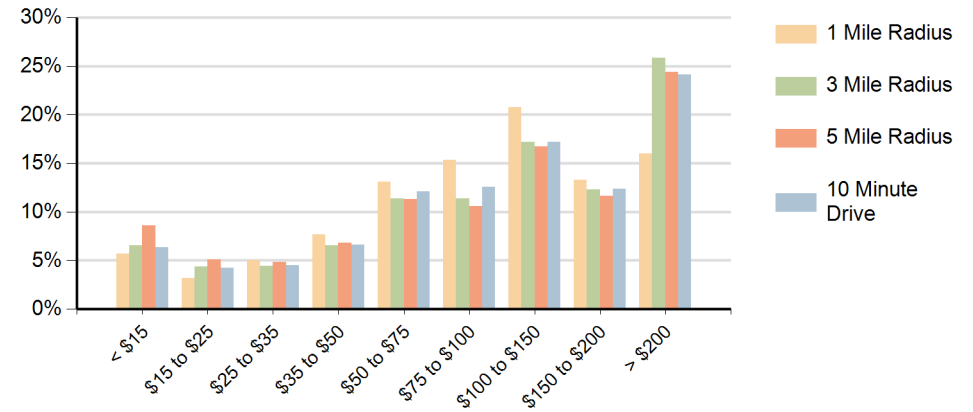
Race (10 Minute Drive)



Population by Age Range



Households by Income Range (\$000)



Culver Center Culver City, California		1 Mile Radius	3 Mile Radius	5 Mile Radius	10 Minute Drive
Population	Current Estimated Population	50,836	279,741	812,293	177,689
	2020 Census Population	51,721	280,005	822,756	176,926
	2010 Census Population	50,968	265,476	783,074	170,142
	Historical Annual Growth 2010 to 2020	0.2%	0.5%	0.5%	0.4%
	Estimated Annual Growth 2020 to 2024	-0.4%	0.0%	-0.3%	0.1%
	Projected Annual Growth 2024 to 2029	0.4%	0.1%	-0.1%	0.1%
Households	Current Estimated Households	24,816	123,718	367,075	79,027
	2020 Census Households	24,708	121,176	362,240	77,024
	2010 Census Households	24,138	114,782	346,091	73,790
	Historical Annual Growth 2010 to 2020	0.2%	0.5%	0.5%	0.4%
	Estimated Annual Growth 2020 to 2024	0.1%	0.5%	0.3%	0.6%
	Projected Annual Growth 2024 to 2029	1.0%	0.7%	0.5%	0.7%
	Population per Household	2.0	2.2	2.1	2.2
Race	White	45.3%	48.1%	46.3%	46.3%
	Black or African American	5.8%	7.9%	13.7%	6.2%
	American Indian	1.0%	1.0%	1.0%	1.1%
	Asian	21.6%	16.0%	13.2%	18.2%
	Pacific Islander	0.2%	0.2%	0.2%	0.2%
	2 or More Races	13.5%	13.7%	12.6%	14.5%
	Other Races	12.5%	13.0%	13.1%	13.6%
	Hispanic Origin	24.7%	25.0%	24.2%	26.8%