

Danbury Green Danbury, Connecticut	1 Mile Radius	3 Mile Radius	5 Mile Radius	10 Minute Drive
---------------------------------------	---------------	---------------	---------------	-----------------

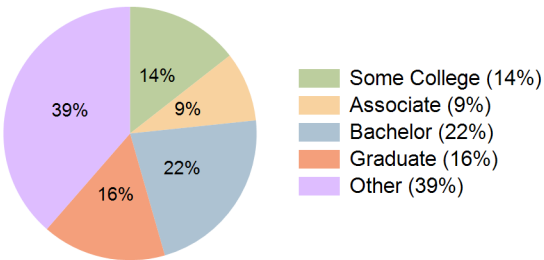
Current Year Demographics

Current Population	5,142	27,099	98,259	29,131
Total Daytime Pop	5,153	31,721	93,357	34,176
Daytime Workers	3,364	20,147	49,329	21,466
Average Household Income	\$146,844	\$148,559	\$131,775	\$121,179
Median Household Income	\$108,790	\$105,042	\$92,826	\$87,781
Total Households	2,400	9,899	35,781	10,474
Median Home Value	\$496,692	\$515,724	\$456,426	\$474,977
Bachelors Degree	28.6%	24.8%	22.8%	22.2%
Graduate Degree	22.6%	20.2%	16.5%	15.9%
Consumer Spending Index	128	130	116	107

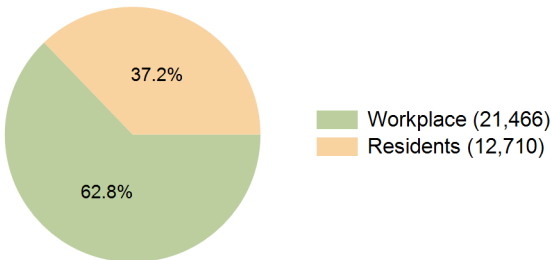
2029 Demographic Projections

Projected Population	5,009	26,505	97,261	28,602
Projected 5 Year Annual Growth Rate (Pop)	-0.5%	-0.4%	-0.2%	-0.4%
Projected Households	2,378	9,836	36,019	10,444
Projected 5 Year Annual Growth Rate (HH)	-0.2%	-0.1%	0.1%	-0.1%

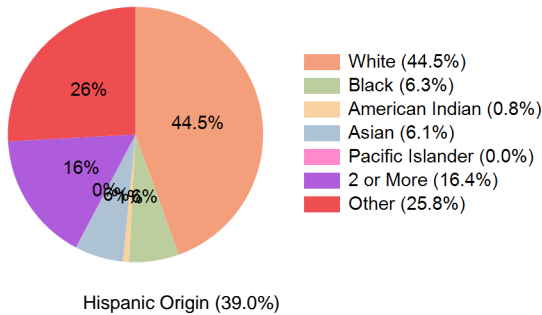
Education (10 Minute Drive)



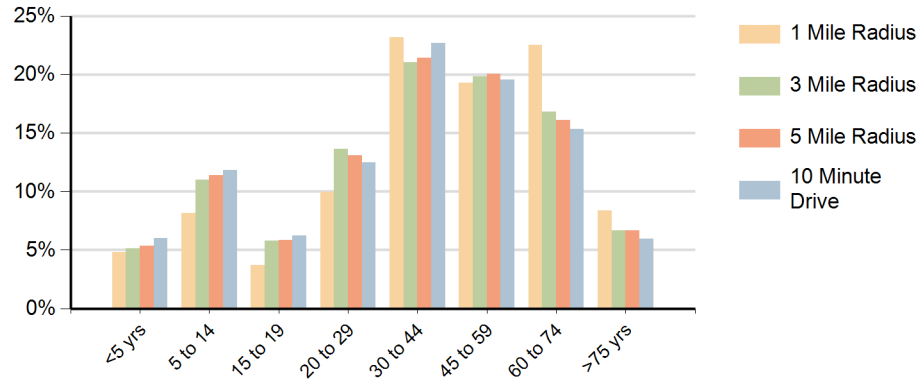
Daytime Population (10 Minute Drive)



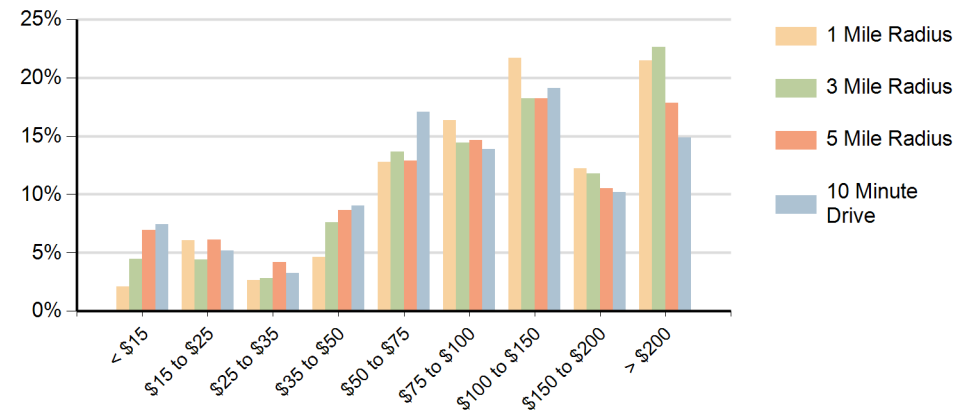
Race (10 Minute Drive)



### Population by Age Range



### Households by Income Range (\$000)



Danbury Green Danbury, Connecticut		1 Mile Radius	3 Mile Radius	5 Mile Radius	10 Minute Drive
Population	Current Estimated Population	5,142	27,099	98,259	29,131
	2020 Census Population	5,237	27,410	98,488	29,294
	2010 Census Population	3,229	24,494	93,486	26,283
	Historical Annual Growth 2010 to 2020	5.0%	1.1%	0.5%	1.1%
	Estimated Annual Growth 2020 to 2024	-0.4%	-0.3%	-0.1%	-0.1%
	Projected Annual Growth 2024 to 2029	-0.5%	-0.4%	-0.2%	-0.4%
Households	Current Estimated Households	2,400	9,899	35,781	10,474
	2020 Census Households	2,420	9,957	35,567	10,496
	2010 Census Households	1,435	8,498	32,710	9,295
	Historical Annual Growth 2010 to 2020	5.4%	1.6%	0.8%	1.2%
	Estimated Annual Growth 2020 to 2024	-0.2%	-0.1%	0.1%	-0.1%
	Projected Annual Growth 2024 to 2029	-0.2%	-0.1%	0.1%	-0.1%
Race	Population per Household	2.1	2.7	2.7	2.8
	White	69.6%	56.9%	52.7%	44.5%
	Black or African American	7.8%	6.3%	5.8%	6.3%
	American Indian	0.1%	0.5%	0.7%	0.8%
	Asian	8.2%	6.6%	5.6%	6.1%
	Pacific Islander	0.0%	0.1%	0.0%	0.0%
	2 or More Races	9.5%	13.5%	15.4%	16.4%
	Other Races	4.8%	16.2%	19.7%	25.8%
Hispanic Origin		13.1%	27.2%	31.8%	39.0%