

Darinor Plaza
Norwalk, Connecticut

1 Mile Radius

3 Mile Radius

5 Mile Radius

10 Minute Drive

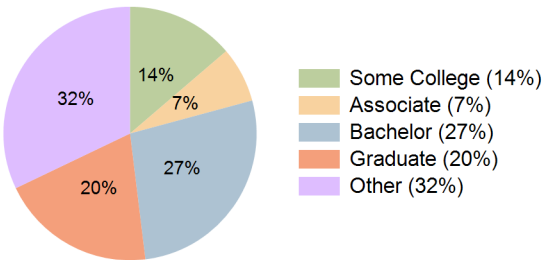
Current Year Demographics

Current Population	13,708	86,853	173,083	81,686
Total Daytime Pop	13,302	88,714	175,729	86,469
Daytime Workers	6,534	48,582	94,342	48,865
Average Household Income	\$128,839	\$160,343	\$181,651	\$158,140
Median Household Income	\$88,705	\$103,790	\$120,027	\$101,436
Total Households	5,111	33,336	65,745	31,419
Median Home Value	\$508,612	\$630,582	\$677,582	\$622,529
Bachelors Degree	22.2%	27.7%	30.5%	27.3%
Graduate Degree	15.9%	20.5%	23.8%	19.9%
Consumer Spending Index	113	140	157	138

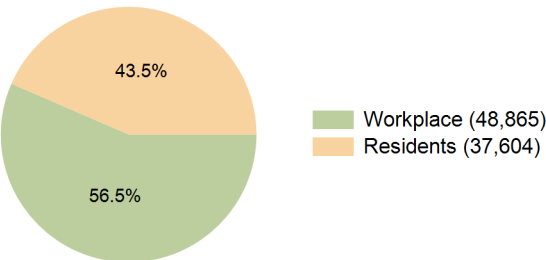
2029 Demographic Projections

Projected Population	13,501	86,708	171,654	81,691
Projected 5 Year Annual Growth Rate (Pop)	-0.3%	0.0%	-0.2%	0.0%
Projected Households	5,110	33,932	66,321	32,048
Projected 5 Year Annual Growth Rate (HH)	0.0%	0.4%	0.2%	0.4%

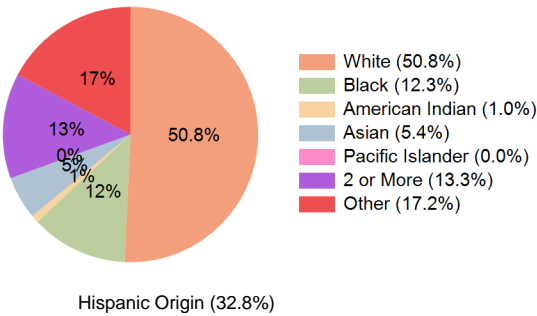
Education (10 Minute Drive)



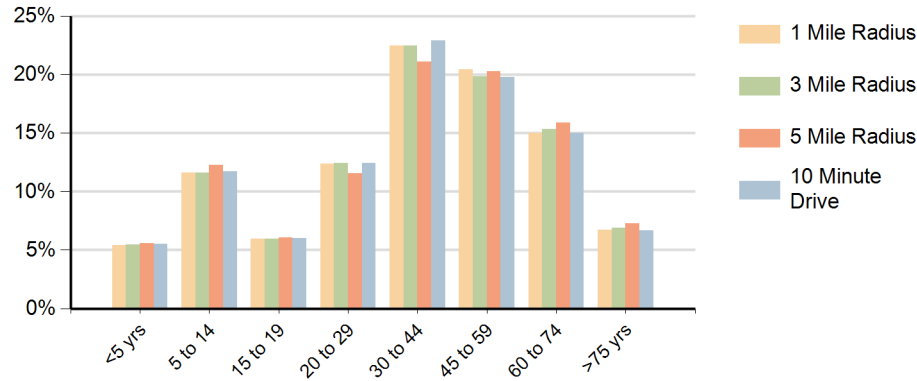
Daytime Population (10 Minute Drive)



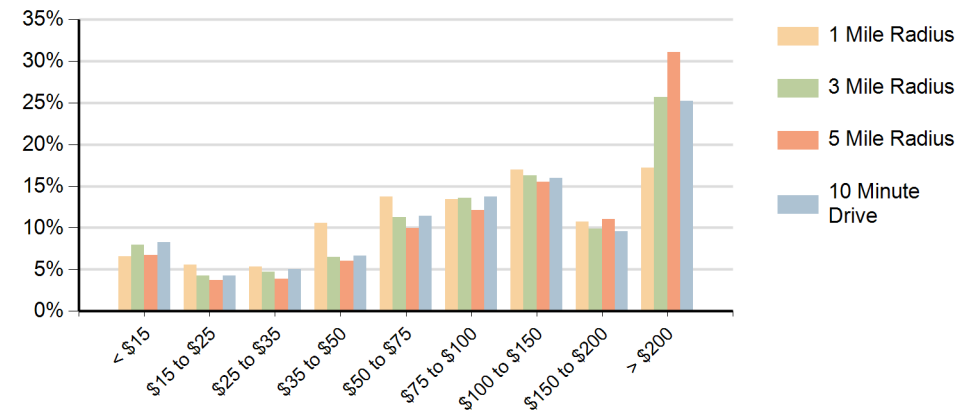
Race (10 Minute Drive)



Population by Age Range



Households by Income Range (\$000)



Darinor Plaza Norwalk, Connecticut		1 Mile Radius	3 Mile Radius	5 Mile Radius	10 Minute Drive
Population	Current Estimated Population	13,708	86,853	173,083	81,686
	2020 Census Population	13,761	85,602	170,922	80,507
	2010 Census Population	13,345	80,902	162,113	76,280
	Historical Annual Growth 2010 to 2020	0.3%	0.6%	0.5%	0.5%
	Estimated Annual Growth 2020 to 2024	-0.1%	0.3%	0.3%	0.3%
	Projected Annual Growth 2024 to 2029	-0.3%	0.0%	-0.2%	0.0%
Households	Current Estimated Households	5,111	33,336	65,745	31,419
	2020 Census Households	5,099	32,768	64,429	30,818
	2010 Census Households	4,897	30,563	61,051	28,768
	Historical Annual Growth 2010 to 2020	0.4%	0.7%	0.5%	0.7%
	Estimated Annual Growth 2020 to 2024	0.1%	0.4%	0.5%	0.5%
	Projected Annual Growth 2024 to 2029	0.0%	0.4%	0.2%	0.4%
Race	Population per Household	2.7	2.6	2.6	2.6
	White	42.8%	52.3%	60.1%	50.8%
	Black or African American	14.4%	11.9%	9.0%	12.3%
	American Indian	1.0%	0.9%	0.7%	1.0%
	Asian	5.7%	5.3%	6.1%	5.4%
	Pacific Islander	0.0%	0.0%	0.0%	0.0%
	2 or More Races	15.6%	13.1%	11.8%	13.3%
	Other Races	20.5%	16.5%	12.3%	17.2%
Hispanic Origin		39.9%	31.6%	25.0%	32.8%