

**The Gallery At Westbury Plaza**  
Garden City, New York

**1 Mile Radius**

**3 Mile Radius**

**5 Mile Radius**

**10 Minute Drive**

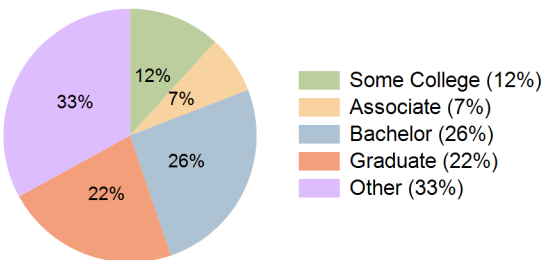
### Current Year Demographics

Current Population	14,053	170,972	467,299	178,053
Total Daytime Pop	32,295	203,745	468,358	215,420
Daytime Workers	25,525	118,799	237,813	127,268
Average Household Income	\$177,556	\$170,235	\$183,446	\$183,819
Median Household Income	\$131,024	\$120,588	\$135,965	\$131,885
Total Households	5,548	52,690	143,011	55,801
Median Home Value	\$754,263	\$681,141	\$693,129	\$703,292
Bachelors Degree	29.9%	23.7%	26.0%	25.6%
Graduate Degree	25.4%	19.1%	21.2%	22.2%
Consumer Spending Index	153	147	157	158

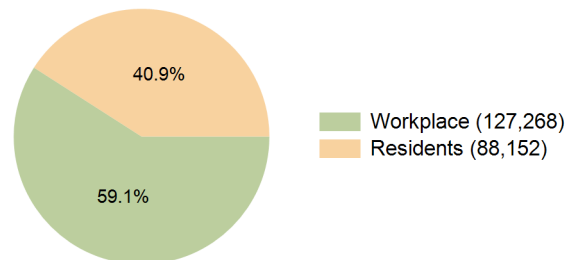
### 2029 Demographic Projections

Projected Population	14,563	172,210	469,053	179,726
Projected 5 Year Annual Growth Rate (Pop)	0.7%	0.1%	0.1%	0.2%
Projected Households	5,733	53,019	143,181	56,263
Projected 5 Year Annual Growth Rate (HH)	0.7%	0.1%	0.0%	0.2%

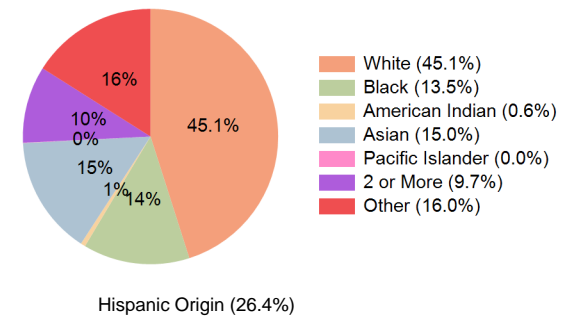
**Education (10 Minute Drive)**



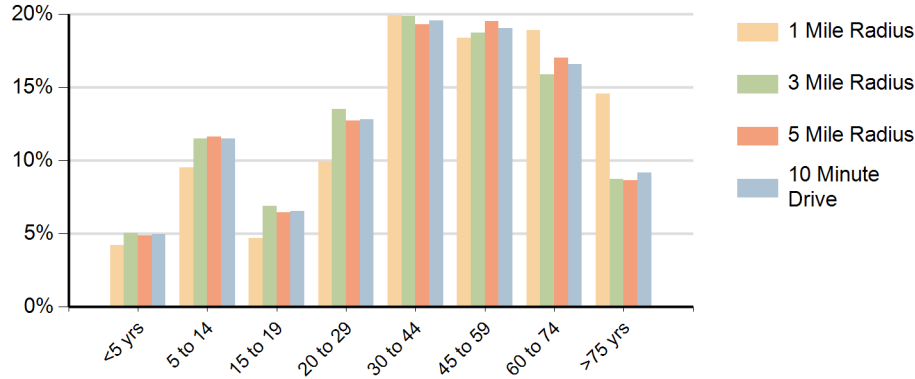
**Daytime Population (10 Minute Drive)**



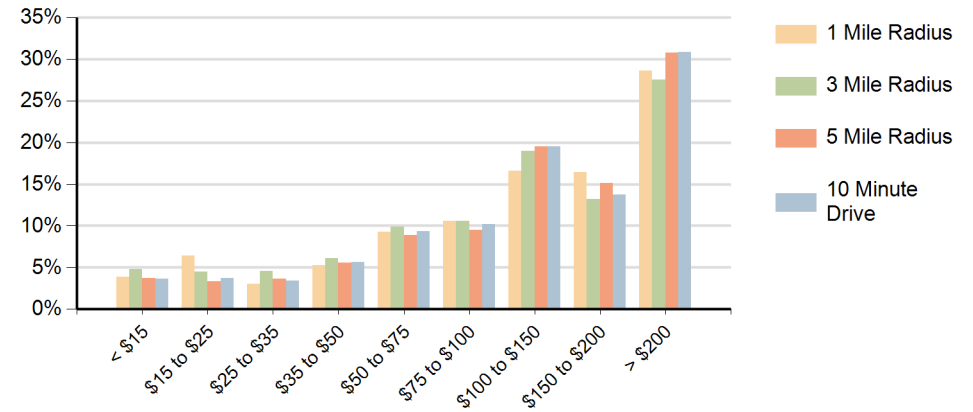
**Race (10 Minute Drive)**



## Population by Age Range



## Households by Income Range (\$000)



The Gallery At Westbury Plaza Garden City, New York		1 Mile Radius	3 Mile Radius	5 Mile Radius	10 Minute Drive
Population	Current Estimated Population	14,053	170,972	467,299	178,053
	2020 Census Population	13,741	169,857	468,422	177,104
	2010 Census Population	12,463	160,644	447,782	168,813
	Historical Annual Growth 2010 to 2020	1.0%	0.6%	0.5%	0.5%
	Estimated Annual Growth 2020 to 2024	0.5%	0.2%	-0.1%	0.1%
	Projected Annual Growth 2024 to 2029	0.7%	0.1%	0.1%	0.2%
Households	Current Estimated Households	5,548	52,690	143,011	55,801
	2020 Census Households	5,408	52,692	143,874	55,783
	2010 Census Households	4,960	50,016	141,017	53,493
	Historical Annual Growth 2010 to 2020	0.9%	0.5%	0.2%	0.4%
	Estimated Annual Growth 2020 to 2024	0.6%	0.0%	-0.1%	0.0%
	Projected Annual Growth 2024 to 2029	0.7%	0.1%	0.0%	0.2%
Population per Household		2.5	3.1	3.2	3.1
Race	White	66.0%	40.3%	43.7%	45.1%
	Black or African American	4.8%	16.9%	14.3%	13.5%
	American Indian	0.4%	0.7%	0.6%	0.6%
	Asian	10.9%	12.1%	18.1%	15.0%
	Pacific Islander	0.0%	0.0%	0.0%	0.0%
	2 or More Races	8.9%	10.2%	9.3%	9.7%
	Other Races	9.1%	19.7%	14.1%	16.0%
	Hispanic Origin	17.6%	31.0%	23.8%	26.4%