

Avenida Biscayne
Aventura, Florida

1 Mile Radius

3 Mile Radius

5 Mile Radius

10 Minute Drive

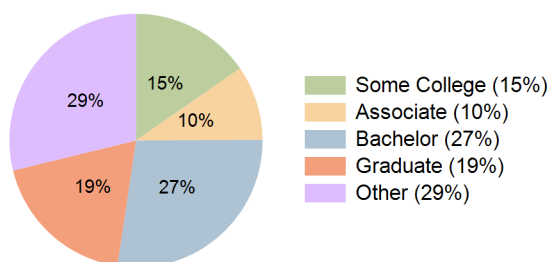
Current Year Demographics

Current Population	27,365	194,053	420,384	123,841
Total Daytime Pop	42,531	204,124	416,195	137,995
Daytime Workers	28,737	105,755	208,722	74,769
Average Household Income	\$134,588	\$111,763	\$101,871	\$118,565
Median Household Income	\$80,717	\$69,651	\$65,968	\$71,031
Total Households	12,125	83,999	171,470	54,570
Median Home Value	\$479,388	\$469,882	\$463,090	\$498,893
Bachelors Degree	33.2%	25.5%	22.4%	27.4%
Graduate Degree	22.4%	17.7%	14.7%	18.8%
Consumer Spending Index	115	97	88	102

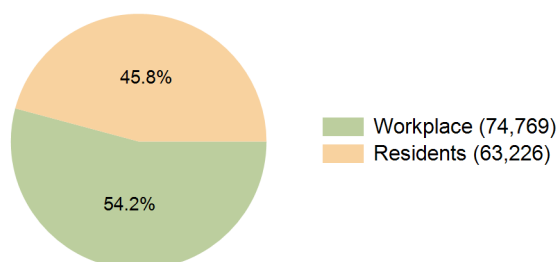
2030 Demographic Projections

Projected Population	31,760	202,203	435,760	131,332
Projected 5 Year Annual Growth Rate (Pop)	3.0%	0.8%	0.7%	1.2%
Projected Households	13,735	87,942	179,564	57,845
Projected 5 Year Annual Growth Rate (HH)	2.5%	0.9%	0.9%	1.2%

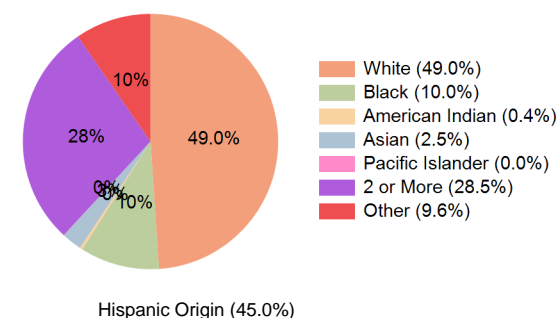
Education (10 Minute Drive)



Daytime Population (10 Minute Drive)

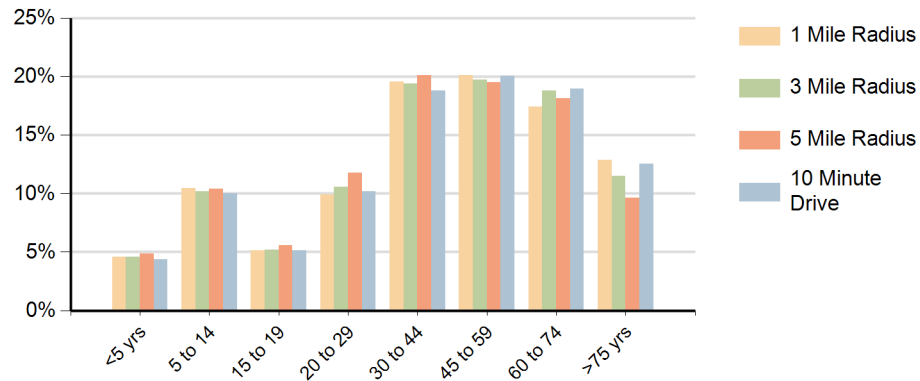


Race (10 Minute Drive)

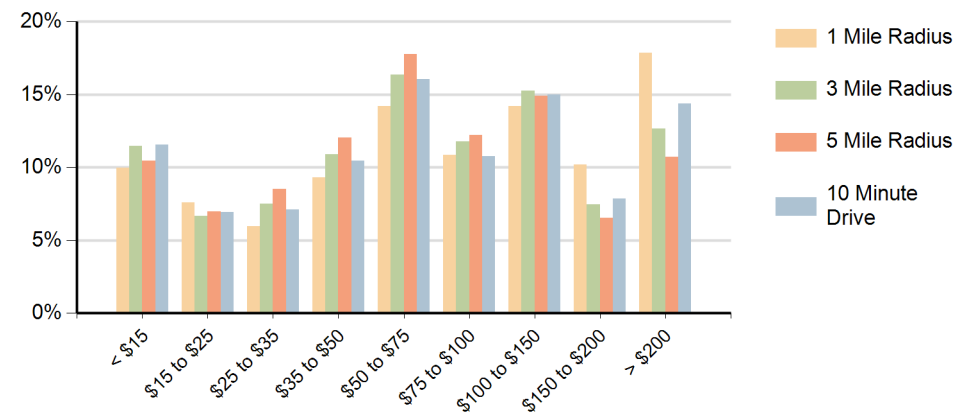


Hispanic Origin (45.0%)

Population by Age Range



Households by Income Range (\$000)



Avenida Biscayne Aventura, Florida		1 Mile Radius	3 Mile Radius	5 Mile Radius	10 Minute Drive
Population	Current Estimated Population	27,365	194,053	420,384	123,841
	2020 Census Population	26,805	191,278	414,735	124,169
	2010 Census Population	22,992	172,520	382,415	114,518
	Historical Annual Growth 2010 to 2020	1.6%	1.0%	0.8%	0.8%
	Estimated Annual Growth 2020 to 2025	0.4%	0.3%	0.3%	-0.1%
	Projected Annual Growth 2025 to 2030	3.0%	0.8%	0.7%	1.2%
Households	Current Estimated Households	12,125	83,999	171,470	54,570
	2020 Census Households	11,808	81,227	165,936	53,696
	2010 Census Households	10,842	75,600	154,404	51,049
	Historical Annual Growth 2010 to 2020	0.9%	0.7%	0.7%	0.5%
	Estimated Annual Growth 2020 to 2025	0.5%	0.6%	0.6%	0.3%
	Projected Annual Growth 2025 to 2030	2.5%	0.9%	0.9%	1.2%
Race	Population per Household	2.2	2.3	2.4	2.3
	White	55.0%	45.1%	34.5%	49.0%
	Black or African American	4.4%	16.1%	31.3%	10.0%
	American Indian	0.2%	0.4%	0.4%	0.4%
	Asian	2.3%	2.5%	2.2%	2.5%
	Pacific Islander	0.0%	0.0%	0.0%	0.0%
	2 or More Races	30.4%	26.2%	22.4%	28.5%
	Other Races	7.7%	9.7%	9.1%	9.6%
Hispanic Origin		44.3%	42.3%	37.0%	45.0%