

Kirkman Shoppes
Orlando, Florida

1 Mile Radius

3 Mile Radius

5 Mile Radius

10 Minute Drive

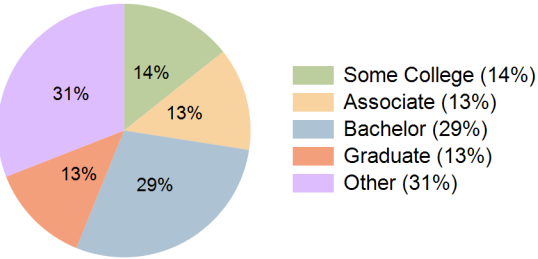
Current Year Demographics

Current Population	19,693	123,714	251,548	96,173
Total Daytime Pop	17,897	143,040	312,910	114,344
Daytime Workers	10,748	89,755	195,332	72,533
Average Household Income	\$80,497	\$90,584	\$94,566	\$102,566
Median Household Income	\$60,000	\$65,884	\$65,304	\$70,342
Total Households	8,005	45,709	92,465	36,521
Median Home Value	\$292,197	\$390,655	\$406,835	\$443,275
Bachelors Degree	34.2%	25.1%	22.4%	28.7%
Graduate Degree	9.3%	11.3%	11.2%	12.9%
Consumer Spending Index	71	80	83	90

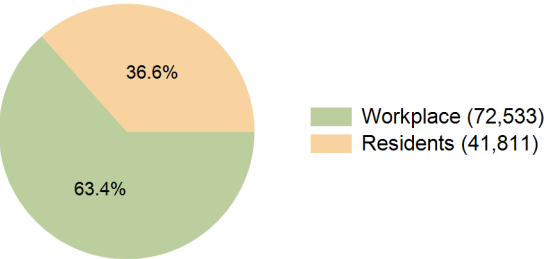
2030 Demographic Projections

Projected Population	19,842	128,761	258,130	99,572
Projected 5 Year Annual Growth Rate (Pop)	0.2%	0.8%	0.5%	0.7%
Projected Households	8,006	47,537	95,015	37,756
Projected 5 Year Annual Growth Rate (HH)	0.0%	0.8%	0.6%	0.7%

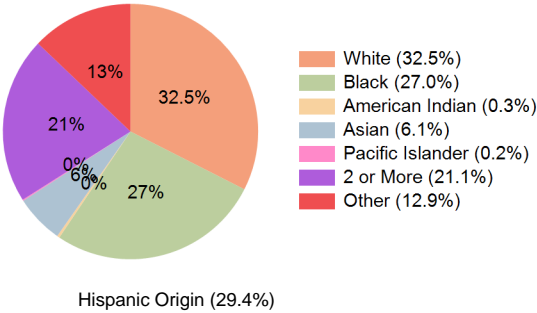
Education (10 Minute Drive)



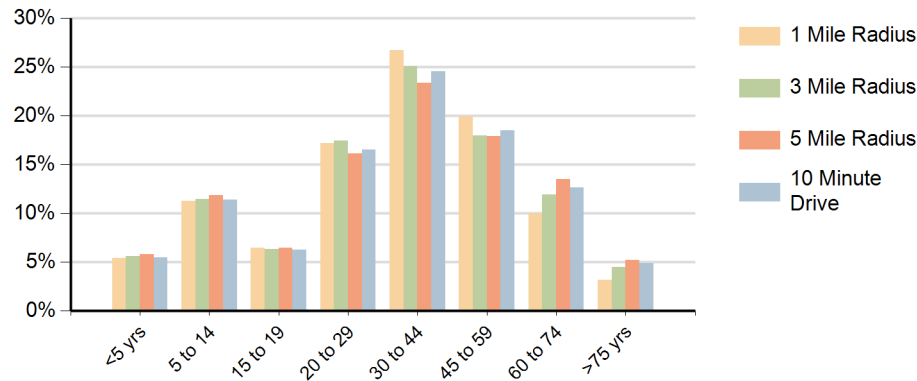
Daytime Population (10 Minute Drive)



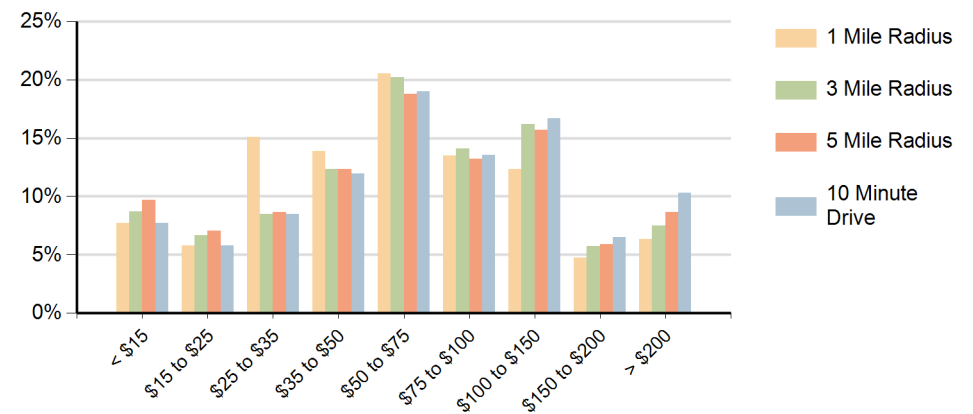
Race (10 Minute Drive)



Population by Age Range



Households by Income Range (\$000)



Kirkman Shoppes Orlando, Florida		1 Mile Radius	3 Mile Radius	5 Mile Radius	10 Minute Drive
Population	Current Estimated Population	19,693	123,714	251,548	96,173
	2020 Census Population	19,583	116,646	241,550	90,613
	2010 Census Population	14,689	99,567	209,066	76,615
	Historical Annual Growth 2010 to 2020	2.9%	1.6%	1.5%	1.7%
	Estimated Annual Growth 2020 to 2025	0.1%	1.1%	0.8%	1.1%
	Projected Annual Growth 2025 to 2030	0.2%	0.8%	0.5%	0.7%
Households	Current Estimated Households	8,005	45,709	92,465	36,521
	2020 Census Households	8,091	43,363	88,659	34,683
	2010 Census Households	6,886	37,668	77,448	30,667
	Historical Annual Growth 2010 to 2020	1.6%	1.4%	1.4%	1.2%
	Estimated Annual Growth 2020 to 2025	-0.2%	1.0%	0.8%	1.0%
	Projected Annual Growth 2025 to 2030	0.0%	0.8%	0.6%	0.7%
Race	Population per Household	2.5	2.6	2.7	2.6
	White	29.9%	28.6%	28.1%	32.5%
	Black or African American	16.4%	31.4%	36.9%	27.0%
	American Indian	0.4%	0.4%	0.5%	0.3%
	Asian	6.7%	5.2%	5.2%	6.1%
	Pacific Islander	0.1%	0.2%	0.1%	0.2%
	2 or More Races	28.1%	20.2%	17.0%	21.1%
	Other Races	18.4%	14.1%	12.3%	12.9%
Hispanic Origin		39.4%	32.3%	28.7%	29.4%