

Mandarin Landing
Jacksonville, Florida

1 Mile Radius

3 Mile Radius

5 Mile Radius

10 Minute Drive

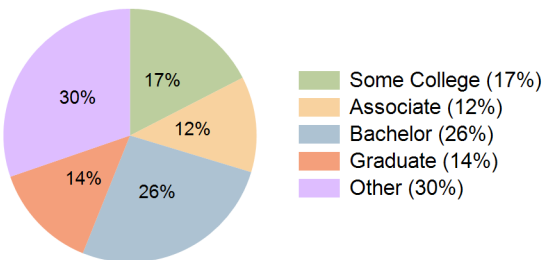
Current Year Demographics

Current Population	6,705	63,819	129,335	51,222
Total Daytime Pop	10,741	60,153	163,293	54,136
Daytime Workers	7,513	31,820	105,989	31,631
Average Household Income	\$125,601	\$116,672	\$112,835	\$112,630
Median Household Income	\$92,042	\$89,507	\$84,685	\$85,735
Total Households	2,794	26,543	53,504	21,316
Median Home Value	\$406,119	\$369,393	\$381,806	\$361,415
Bachelors Degree	29.2%	27.4%	28.2%	26.4%
Graduate Degree	15.9%	15.1%	14.7%	13.7%
Consumer Spending Index	110	103	100	100

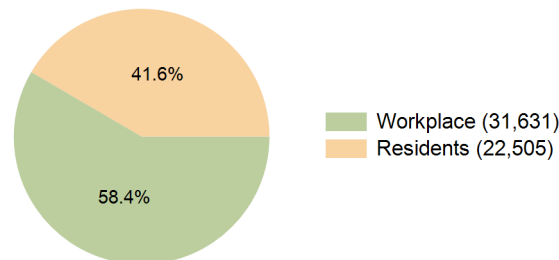
2029 Demographic Projections

Projected Population	6,592	63,973	132,170	50,970
Projected 5 Year Annual Growth Rate (Pop)	-0.3%	0.1%	0.4%	-0.1%
Projected Households	2,791	27,029	55,542	21,539
Projected 5 Year Annual Growth Rate (HH)	0.0%	0.4%	0.8%	0.2%

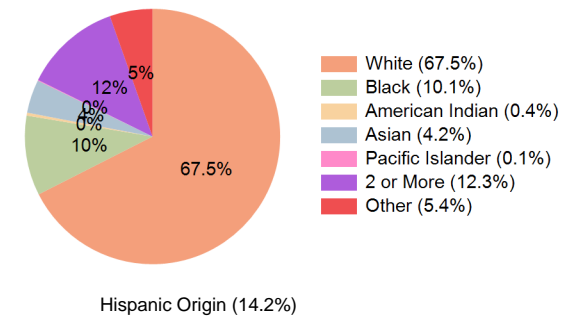
Education (10 Minute Drive)



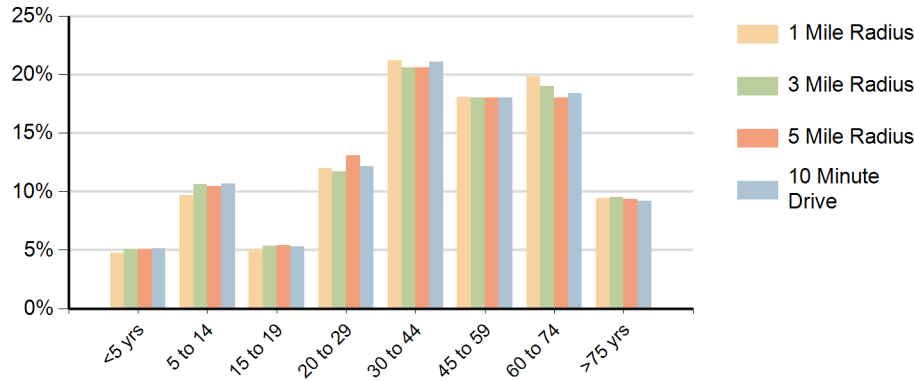
Daytime Population (10 Minute Drive)



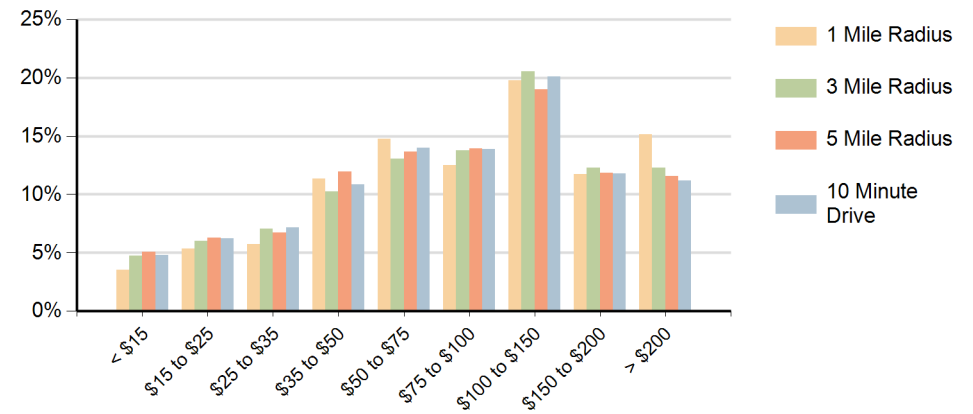
Race (10 Minute Drive)



Population by Age Range



Households by Income Range (\$000)



Mandarin Landing Jacksonville, Florida		1 Mile Radius	3 Mile Radius	5 Mile Radius	10 Minute Drive
Population	Current Estimated Population	6,705	63,819	129,335	51,222
	2020 Census Population	6,739	63,223	127,209	51,174
	2010 Census Population	6,085	56,935	114,757	46,110
	Historical Annual Growth 2010 to 2020	1.0%	1.1%	1.0%	1.1%
	Estimated Annual Growth 2020 to 2024	-0.1%	0.2%	0.4%	0.0%
	Projected Annual Growth 2024 to 2029	-0.3%	0.1%	0.4%	-0.1%
Households	Current Estimated Households	2,794	26,543	53,504	21,316
	2020 Census Households	2,787	26,110	52,101	21,132
	2010 Census Households	2,504	23,830	47,326	19,312
	Historical Annual Growth 2010 to 2020	1.1%	0.9%	1.0%	0.9%
	Estimated Annual Growth 2020 to 2024	0.1%	0.4%	0.6%	0.2%
	Projected Annual Growth 2024 to 2029	0.0%	0.4%	0.8%	0.2%
	Population per Household	2.4	2.4	2.4	2.4
Race	White	72.3%	68.6%	65.8%	67.5%
	Black or African American	6.2%	9.9%	11.9%	10.1%
	American Indian	0.4%	0.4%	0.4%	0.4%
	Asian	3.4%	4.3%	5.3%	4.2%
	Pacific Islander	0.0%	0.1%	0.1%	0.1%
	2 or More Races	12.8%	11.7%	11.2%	12.3%
	Other Races	4.8%	5.0%	5.2%	5.4%
	Hispanic Origin	14.3%	13.6%	14.0%	14.2%