

Pavilion Naples, Florida	1 Mile Radius	3 Mile Radius	5 Mile Radius	10 Minute Drive
-----------------------------	---------------	---------------	---------------	-----------------

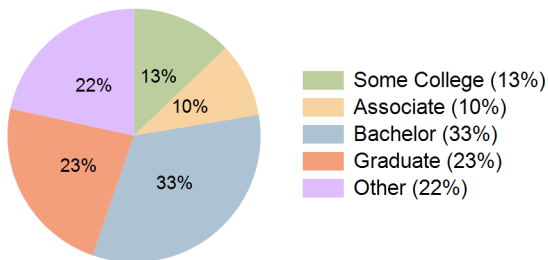
Current Year Demographics

Current Population	5,839	40,525	97,293	56,291
Total Daytime Pop	8,321	62,783	130,275	88,835
Daytime Workers	4,728	37,899	69,941	54,347
Average Household Income	\$156,222	\$171,345	\$163,116	\$154,983
Median Household Income	\$98,325	\$104,465	\$99,690	\$93,074
Total Households	2,938	20,227	48,276	27,988
Median Home Value	\$893,048	\$829,541	\$735,753	\$730,723
Bachelors Degree	35.3%	34.9%	34.1%	32.9%
Graduate Degree	25.4%	24.2%	23.9%	23.1%
Consumer Spending Index	137	150	143	136

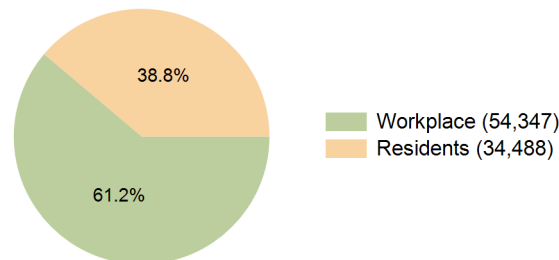
2029 Demographic Projections

Projected Population	5,818	40,385	97,447	56,199
Projected 5 Year Annual Growth Rate (Pop)	-0.1%	-0.1%	0.0%	0.0%
Projected Households	2,995	20,804	49,866	28,789
Projected 5 Year Annual Growth Rate (HH)	0.4%	0.6%	0.7%	0.6%

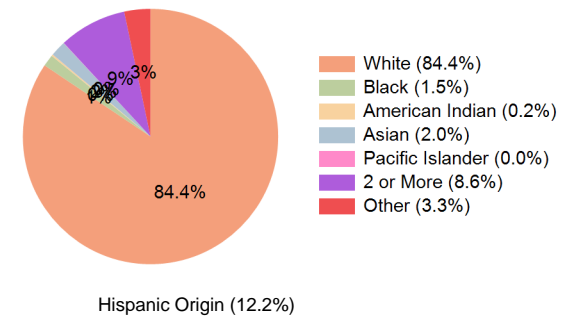
Education (10 Minute Drive)



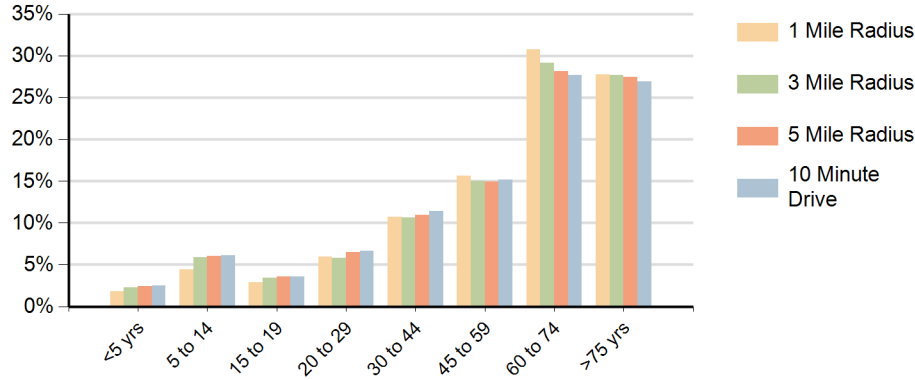
Daytime Population (10 Minute Drive)



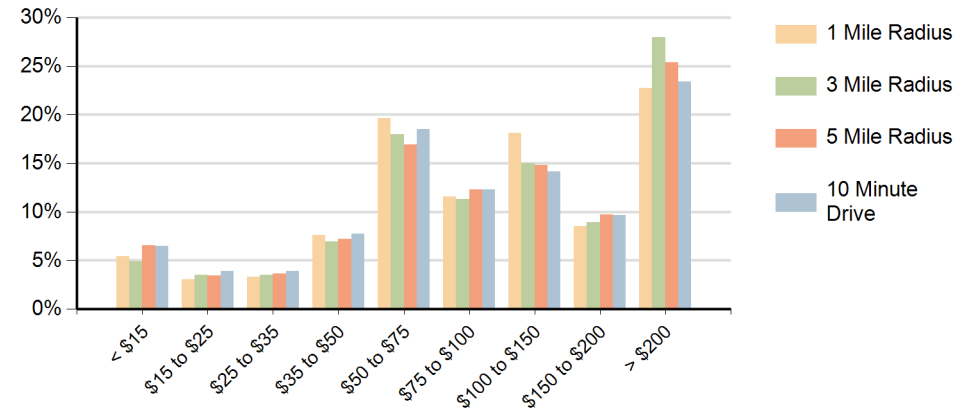
Race (10 Minute Drive)



Population by Age Range



Households by Income Range (\$000)



Pavilion Naples, Florida		1 Mile Radius	3 Mile Radius	5 Mile Radius	10 Minute Drive
Population	Current Estimated Population	5,839	40,525	97,293	56,291
	2020 Census Population	5,856	39,901	95,234	55,003
	2010 Census Population	6,309	39,278	88,694	53,266
	Historical Annual Growth 2010 to 2020	-0.7%	0.2%	0.7%	0.3%
	Estimated Annual Growth 2020 to 2024	-0.1%	0.4%	0.5%	0.6%
	Projected Annual Growth 2024 to 2029	-0.1%	-0.1%	0.0%	0.0%
Households	Current Estimated Households	2,938	20,227	48,276	27,988
	2020 Census Households	2,911	19,574	46,597	27,008
	2010 Census Households	3,075	19,123	43,462	26,224
	Historical Annual Growth 2010 to 2020	-0.6%	0.2%	0.7%	0.3%
	Estimated Annual Growth 2020 to 2024	0.2%	0.8%	0.8%	0.8%
	Projected Annual Growth 2024 to 2029	0.4%	0.6%	0.7%	0.6%
Population per Household		2.0	2.0	2.0	2.0
Race	White	86.3%	86.2%	84.0%	84.4%
	Black or African American	1.0%	1.1%	1.6%	1.5%
	American Indian	0.1%	0.2%	0.2%	0.2%
	Asian	1.1%	1.9%	2.1%	2.0%
	Pacific Islander	0.0%	0.0%	0.0%	0.0%
	2 or More Races	8.2%	7.7%	8.7%	8.6%
	Other Races	3.2%	2.9%	3.4%	3.3%
	Hispanic Origin	10.8%	10.4%	12.3%	12.2%