

| Pine Island Davie, Florida | 1 Mile Radius | 3 Mile Radius | 5 Mile Radius | 10 Minute Drive |
|-------------------------------|---------------|---------------|---------------|-----------------|
|-------------------------------|---------------|---------------|---------------|-----------------|

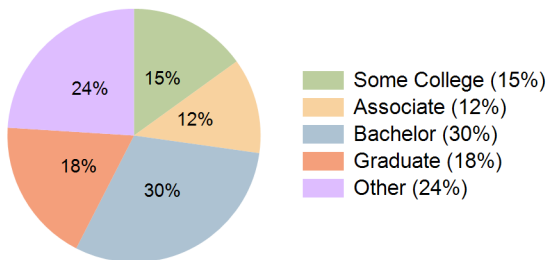
Current Year Demographics

| | | | | |
|--------------------------|-----------|-----------|-----------|-----------|
| Current Population | 16,630 | 114,780 | 356,029 | 139,210 |
| Total Daytime Pop | 18,313 | 111,497 | 319,831 | 141,880 |
| Daytime Workers | 11,218 | 62,034 | 158,072 | 83,439 |
| Average Household Income | \$100,720 | \$123,784 | \$107,149 | \$130,861 |
| Median Household Income | \$75,725 | \$89,184 | \$76,759 | \$95,934 |
| Total Households | 7,822 | 46,813 | 134,024 | 53,540 |
| Median Home Value | \$256,838 | \$478,839 | \$428,600 | \$482,841 |
| Bachelors Degree | 27.8% | 30.2% | 24.4% | 30.3% |
| Graduate Degree | 15.8% | 18.6% | 13.1% | 18.4% |
| Consumer Spending Index | 90 | 109 | 95 | 115 |

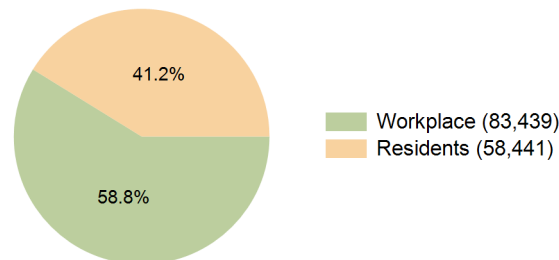
2029 Demographic Projections

| | | | | |
|---|--------|---------|---------|---------|
| Projected Population | 16,981 | 117,167 | 360,637 | 142,576 |
| Projected 5 Year Annual Growth Rate (Pop) | 0.4% | 0.4% | 0.3% | 0.5% |
| Projected Households | 8,013 | 48,236 | 137,021 | 55,727 |
| Projected 5 Year Annual Growth Rate (HH) | 0.5% | 0.6% | 0.4% | 0.8% |

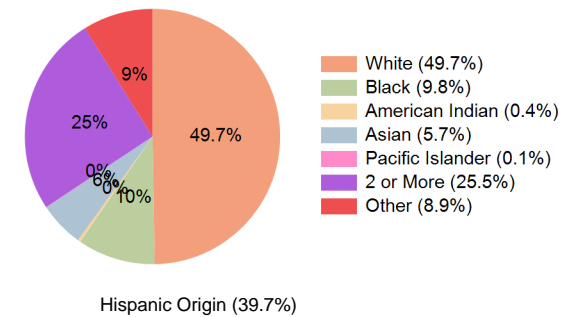
Education (10 Minute Drive)



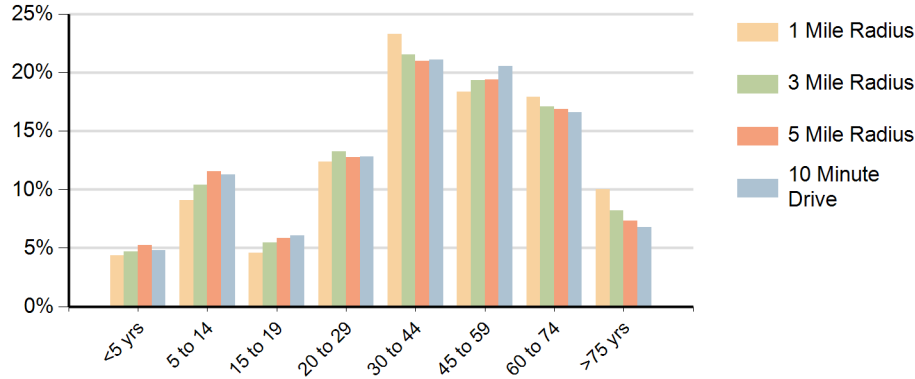
Daytime Population (10 Minute Drive)



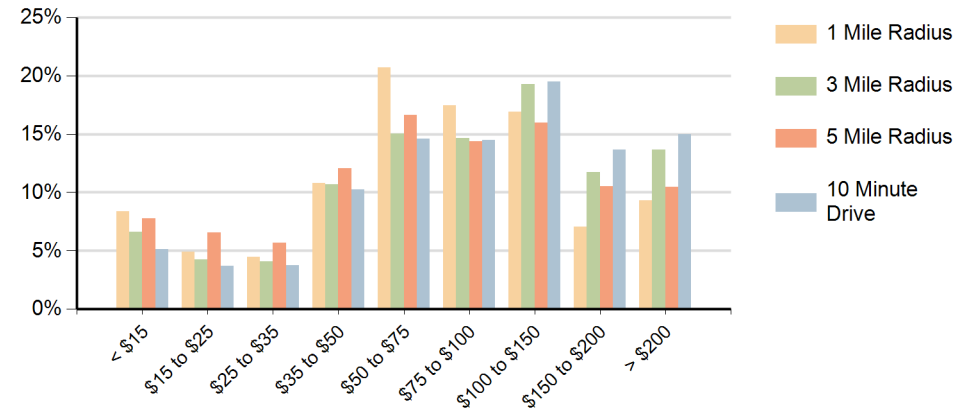
Race (10 Minute Drive)



Population by Age Range



Households by Income Range (\$000)



| Pine Island Davie, Florida | | 1 Mile Radius | 3 Mile Radius | 5 Mile Radius | 10 Minute Drive |
|-------------------------------|---------------------------------------|---------------|---------------|---------------|-----------------|
| Population | Current Estimated Population | 16,630 | 114,780 | 356,029 | 139,210 |
| | 2020 Census Population | 15,011 | 111,191 | 352,386 | 136,099 |
| | 2010 Census Population | 13,379 | 101,855 | 311,956 | 123,642 |
| | Historical Annual Growth 2010 to 2020 | 1.2% | 0.9% | 1.2% | 1.0% |
| | Estimated Annual Growth 2020 to 2024 | 2.4% | 0.8% | 0.2% | 0.5% |
| | Projected Annual Growth 2024 to 2029 | 0.4% | 0.4% | 0.3% | 0.5% |
| Households | Current Estimated Households | 7,822 | 46,813 | 134,024 | 53,540 |
| | 2020 Census Households | 7,046 | 45,154 | 131,688 | 51,925 |
| | 2010 Census Households | 6,645 | 42,310 | 117,733 | 48,028 |
| | Historical Annual Growth 2010 to 2020 | 0.6% | 0.7% | 1.1% | 0.8% |
| | Estimated Annual Growth 2020 to 2024 | 2.5% | 0.9% | 0.4% | 0.7% |
| | Projected Annual Growth 2024 to 2029 | 0.5% | 0.6% | 0.4% | 0.8% |
| Population per Household | | 2.1 | 2.4 | 2.6 | 2.6 |
| Race | White | 53.4% | 51.8% | 38.4% | 49.7% |
| | Black or African American | 9.7% | 12.7% | 27.4% | 9.8% |
| | American Indian | 0.3% | 0.3% | 0.4% | 0.4% |
| | Asian | 4.7% | 5.6% | 4.8% | 5.7% |
| | Pacific Islander | 0.1% | 0.1% | 0.1% | 0.1% |
| | 2 or More Races | 24.1% | 22.1% | 20.7% | 25.5% |
| | Other Races | 7.8% | 7.5% | 8.3% | 8.9% |
| | Hispanic Origin | 35.5% | 33.0% | 33.1% | 39.7% |