

Plaza Escuela
Walnut Creek, California

1 Mile Radius

3 Mile Radius

5 Mile Radius

10 Minute Drive

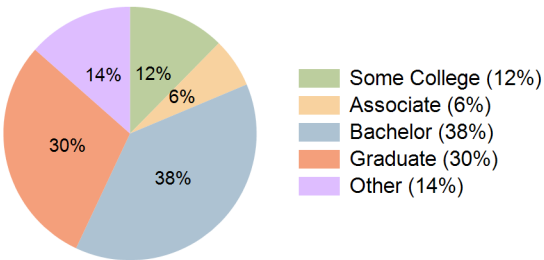
Current Year Demographics

Current Population	17,667	102,248	201,911	119,499
Total Daytime Pop	38,220	123,622	219,251	147,356
Daytime Workers	30,674	71,188	115,332	90,350
Average Household Income	\$185,940	\$200,933	\$207,342	\$203,617
Median Household Income	\$128,453	\$141,765	\$148,166	\$145,254
Total Households	8,521	45,596	82,032	49,894
Median Home Value	\$1,330,831	\$1,248,665	\$1,228,799	\$1,323,385
Bachelors Degree	39.6%	38.9%	37.4%	38.3%
Graduate Degree	34.1%	33.6%	29.6%	29.5%
Consumer Spending Index	160	173	178	175

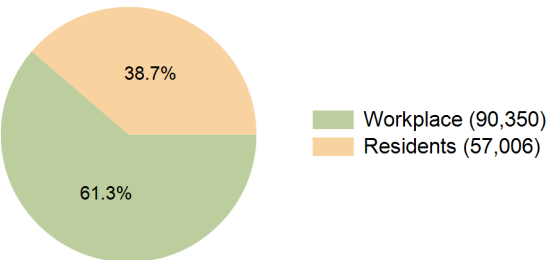
2029 Demographic Projections

Projected Population	17,878	103,424	203,341	121,097
Projected 5 Year Annual Growth Rate (Pop)	0.2%	0.2%	0.1%	0.3%
Projected Households	8,580	45,870	82,179	50,354
Projected 5 Year Annual Growth Rate (HH)	0.1%	0.1%	0.0%	0.2%

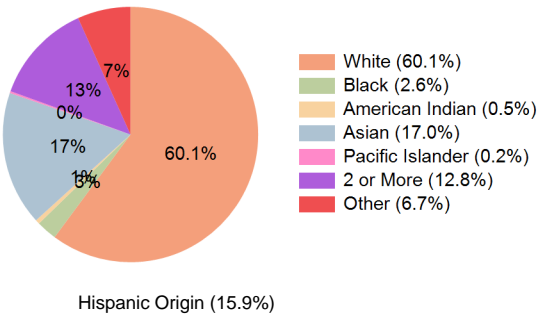
Education (10 Minute Drive)



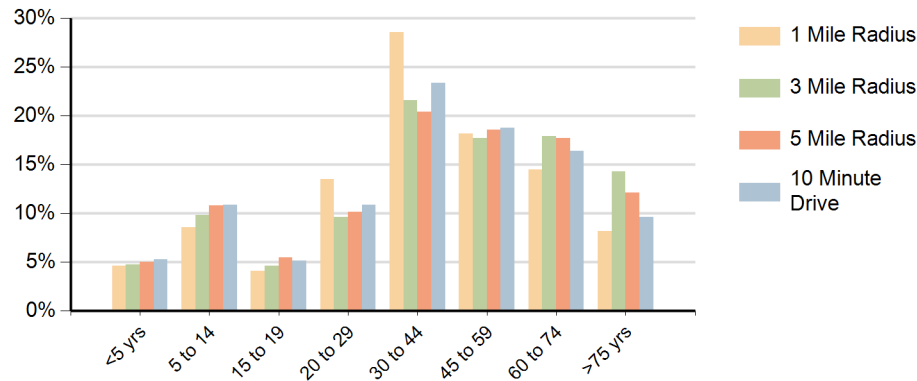
Daytime Population (10 Minute Drive)



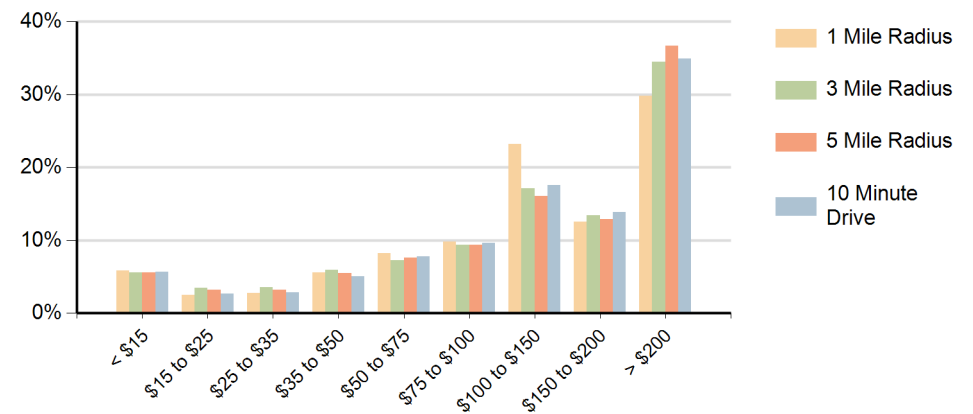
Race (10 Minute Drive)



Population by Age Range



Households by Income Range (\$000)



Plaza Escuela Walnut Creek, California		1 Mile Radius	3 Mile Radius	5 Mile Radius	10 Minute Drive
Population	Current Estimated Population	17,667	102,248	201,911	119,499
	2020 Census Population	17,737	102,377	202,971	120,336
	2010 Census Population	15,642	92,844	189,930	110,228
	Historical Annual Growth 2010 to 2020	1.3%	1.0%	0.7%	0.9%
	Estimated Annual Growth 2020 to 2024	-0.1%	0.0%	-0.1%	-0.2%
	Projected Annual Growth 2024 to 2029	0.2%	0.2%	0.1%	0.3%
Households	Current Estimated Households	8,521	45,596	82,032	49,894
	2020 Census Households	8,455	45,588	82,367	49,856
	2010 Census Households	7,641	42,820	78,652	46,993
	Historical Annual Growth 2010 to 2020	1.0%	0.6%	0.5%	0.6%
	Estimated Annual Growth 2020 to 2024	0.2%	0.0%	-0.1%	0.0%
	Projected Annual Growth 2024 to 2029	0.1%	0.1%	0.0%	0.2%
Race	Population per Household	2.0	2.2	2.4	2.4
	White	61.4%	64.0%	60.4%	60.1%
	Black or African American	3.2%	2.3%	2.2%	2.6%
	American Indian	0.4%	0.4%	0.5%	0.5%
	Asian	16.6%	17.7%	16.8%	17.0%
	Pacific Islander	0.2%	0.2%	0.2%	0.2%
	2 or More Races	13.0%	11.9%	12.8%	12.8%
	Other Races	5.1%	3.7%	6.9%	6.7%
Hispanic Origin		14.8%	11.4%	16.2%	15.9%